

Crowmarsh News

Issue 493

October 2019

The *Crowmarsh News* is a self-funded publication, and we regret that we are unable to accept unpaid advertising, even from local businesses and societies.

We welcome material for inclusion but do not necessarily endorse the views of contributors. We reserve the right to refuse material or to shorten contributions as may be appropriate. Editorial decisions are final.

ADVERTISING RATES

The *Crowmarsh News* is currently distributed to over 700 households in Crowmarsh Gifford, North Stoke and Mongewell.

Our rates for a one-eighth page display advertisement (nominal 9cm wide x 7cm tall) are:

- 1 month – £8.50
- 3 months – £25.00
- 6 months – £45.00

Leaflet distribution

For a single sheet loose insert in the *Crowmarsh News* (size up to A4), our current rate is £30.00 for a single month. Advertisers must supply their own inserts (740 copies, please).

Cheques should be made payable to Crowmarsh News Association.

The Crowmarsh News Team

The *Crowmarsh News* is run by the Crowmarsh News Association, a group of local volunteers.

Editorial and Layout: James and Toni Taylor

Editorial support: John Griffin, Kirsty Dawson, Amanda Maher, Doug German, Rev Kevin Beer

What's On listings: Julian Park

Advertising: Pat Shields

Distribution: Frank Sadler and Team

Next month's issue

All new advertisements and all copy for the November issue of *Crowmarsh News* must reach us before our **20th October deadline**.

For all items of news, articles or correspondence, please e-mail

crowmarsh.editor@gmail.com

or deliver to the Editors at 57 The Street.

For all advertising, please contact

crowmarshadvertisers@gmail.com

or deliver to The Old School, Benson Lane.



GARDEN CARE AND DEVELOPMENT

We take care of your garden for you, so you can enjoy it all year round!

- Weeding & tidying beds & borders
- Lawn care and seasonal treatments
- Hedge trimming
- Pruning trees & shrubs
- Pond maintenance



Call 01491 280447, email info@greenart.co.uk or visit www.greenart.co.uk to find out about our full range of services



Look good... feel good

Forrester's Wallingford has built its reputation as a centre of excellence and showcase for cuts and colour.

For more information about offers and promotions or to book a FREE consultation, contact us today.



You can now book online

01491 837 523 Forrester's4Hair.com

Find us at: 25 High Street, Wallingford. OX10 0BU



Electrical

Plumbing

Fire and Security

Call: 01491 835875

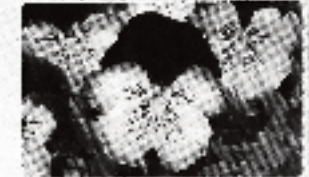
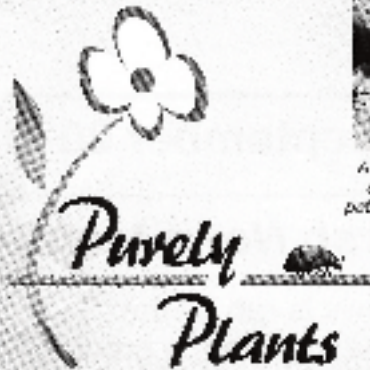
Email - reception@groupga.co.uk

THE POSITIVE OUTCOMES GROUP

Unit H Moses Winter Way, Wallingford, OX10 9FE



Keep Plants Healthy & Growing!



A multitude of varieties & colours of bedding, basket, border and patio plants all grown on the nursery

Best selection of Winter/Spring flowering Pansies

Basket & Container Planting Service

Autumn Season Sept - Nov • Open 7 days a week 10am - 5pm
142a Wantage Road, Wallingford, OX10 0LL

01491 833 831 www.purelyplants.co.uk

HOWARD CHADWICK

A caring family owned and managed Funeral Service

- Dedicated Private Chapel of Rest •
- Golden Charter Pre Paid Funeral Plans •
- Specialists in Memorial Stones and Designs •

33 Benson Lane, Crowmarsh,
Wallingford OX10 8ED
Tel: 01491 825222



G.R. Galliford

Graham
07762650809
01491 824583



- Mini Digger with Operator
- Block Paving
- Driveways
- Patios
- Fencing
- Drop Kerbs
- Groundwork

You can hire

the Dance Studio, Sports Hall or the Astroturf at Wallingford School.

Call Wilson Chong on 829762, or e-mail Leisure-centre@wallingfordschool.com

CROWMARSH TYRE

BALANCING, TRACKING & PUNCTURES. LARGE STOCKS OF LEADING MAKES

AND EXHAUST CENTRE

01491 834088

BEADLE ESTATE, HITHERCROFT ROAD, WALLINGFORD, OXON, OX10 9GW



BATTERIES, COMPREHENSIVE STOCK FOR BRITISH, JAPANESE AND EUROPEAN CARS
24 MONTHS UNLIMITED MILEAGE GUARANTEE

New road names at CABI site

Many of you will have seen that a new housing development is being built at the CABI site off Nosworthy Way. Crowmarsh Parish Council was invited by SODC to suggest suitable names for some of the roads at the new site. Four of the road names suggested by the Parish Council have been accepted. Three of them honour local connections with the RAF.

Halifax Road commemorates our connection with the loss of Flying Officer Wilding and Sergeant Andrew who died in the crash of their Canadian 426 Squadron Halifax on 9th September 1944 at Newnham Murren returning from an aborted mission to Le Havre. The crash site is not far from the new housing development. Wallingford has its tribute with Andrew and Wilding Roads, but it is appropriate that we also acknowledge this event which occurred in our parish.

Shuttleworth Close is named after Richard Shuttleworth who was born at Old Warden in Bedfordshire in 1909. During the interwar years he was a Grand Prix racing driver but after a serious racing accident in 1936 he focused on finding and restoring old aircraft. The collection he started still exists and they are exhibited at Old Warden Aerodrome every year. With the outbreak of WWII he volunteered his services as a pilot and was killed in a night training accident when his Fairey Battle of 12 OTU, based at RAF Benson, crashed on 2nd August 1940 between Crowmarsh and Ewelme.

One non-RAF name proposed by the Parish Council is Hasthorpe Road, in honour of Mrs Betty Hasthorpe, Head of Crowmarsh Gifford Primary School for many years, including the move from Benson Lane to the new school on Reading Road in 1969.

Elizabeth Road (coincidentally Mrs Hasthorpe's Christian name) is named after HM The Queen, in recognition that the Queen's flight was based at RAF Benson until 1995. Its successor, No. 32 (The Royal) Squadron, has been based there again temporarily over this past summer, before returning to RAF Northolt. See p15 for a map.

Andrew Johnson

What's Happened to Our Neighbourhood Plan?

We have been working hard over the last 12 months to progress our Neighbourhood Plan.

The draft Strategic Environment Assessment (SEA) was passed to our case officers at the South Oxfordshire District Council (SODC) Planning Department at Milton for comments and guidance in September last year.

Guidance was received at a further meeting in January, when it was agreed that we did not need to allocate any further land for housing within the fifteen-year tenure of our emerging Neighbourhood Plan, as the Parish had already exceeded the required numbers of new dwellings described in the emerging SODC Local Plan. The sites at CABI and the land east of Benson Lane had gained planning permissions at Public Inquiries. The Newnham Manor site has already passed through the SODC Planning Committee procedure once.

So, what to do next, we asked? After a six month wait, we were again summoned to a meeting at Milton. We were told to concentrate on justifying the allocation of land for employment use at Howbery Park, and when we balked at this; we were advised to get a contract for a consultant to help us to do this and tidy the SEA in general.

No consultant wanted the job, although three companies were invited to tender. So, we have done it ourselves, and our text has since been approved by our current consultant.

This next contract was awarded to London-based planning consultancy O'Neill Homer with the brief that they help us take our Plan to completion. They have so far reported on a full assessment of all our reports with valuable indications where 'cutting and pasting' would clarify the plot and benefit the reader, while making the documents 'planner friendly'.

We also asked what we should do with all our site assessment reporting, now redundant as we are not allocating further land for housing development, at least until 2034. We were advised to leave it all in and to use it to create a settlement boundary plan for the village of

Crowmarsh Gifford (Brightwell-cum-Sotwell were one of the first villages in England to do just this, so thank you Brightwell for the precedent.)

Very soon we shall pass the revised documentation over to you as both hard-copy, lodged in public places in the village, and on the Parish Council web site. There will follow a six-week consultation period, along with village meetings to explain what we have done and why we have done it. There will then follow a Referendum for Parishioners to support the proposed plan. The Plan and all the supporting documents will then be submitted to the District Council who will be asked to 'make' the Plan. The anticipated date for the adoption of the Plan is April/May next year.

And what will the Plan do for us once it is 'made'? It will benefit the Parish by empowering us, the local people, to promote the planning for growth within the Parish that we want. It will prevent further unwanted speculative housing developments being dumped upon us. It will also enhance the income of the Parish Council and enable a variety of much needed projects.

Nick Robins and Nigel Hannigan

Wallingford Photographic Club

Wallingford Photographic Club welcomes people of all ages and levels of experience to come and learn how to improve their photography, meet like-minded individuals and hear from some inspirational speakers.

The club meets every Thursday at 7.30 for an 8pm start (7.45 start on competition evenings) at Crowmarsh Pavilion. The programme for October includes a talk by Bob Brind-Surch entitled '2017 A Year Of Wildlife – UK & Tanzania' on the 10th, a critique evening at which anyone can receive feedback on their images on the 17th, a practical evening on the 24th and our first No Set Subject competition of the 2019/20 season on the 31st. See www.wallingfordphoto.club for more information and come along to a meeting –visitors are always welcome!

Emily Dunn

Benson Garden Club

Following what promises to be an inspiring virtual tour of The Top 50 Gardens in the World on 3rd October, in the company of garden writer and broadcaster Tony Russell, it's back to reality with a bump at our meeting on 7th November, when there's no escape from those vexing horticultural problems no amount of Googling can seem to resolve.

But fear not, help and valuable advice will be at hand from our invited panel of experts: Ray Broughton (Senior Lecturer at Sparsholt College), Benjamin Pope (who heads a team of four at a private garden in West Sussex) and Thomas Stone (a freelance gardener specialising in pruning, roses and wildlife gardening). All you have to do is to email your question in advance please, by 31st October, to the address below so we can be sure to include as broad a range as possible at this, our very own Gardeners' Question Time.

Both meetings will be held in Benson Parish Hall, starting at 7.45pm, and visitors are always most welcome. For any further information, please email bensongardening-club@gmail.com or find us on Facebook.

Cat's Chorus

Cat's Chorus is an a cappella choir who meet every Monday night in Crowmarsh. We provide a fun, supportive yet hard-working environment for lapsed singers to rediscover the joys of singing or for existing singers to take on a new challenge.

We're holding an Open Evening to recruit new members, and this is an ideal opportunity for anyone who'd like to try us out. Come along on Monday 7th October at 6:30pm to the Crowmarsh Pavilion. The event is FREE, although pre-registration is required.

For more information and to sign up, visit www.catschorus.co.uk

To book Crowmarsh Gifford Village Hall

call Chris Strange on 07711 904252, or e-mail cvhbookings@gmail.com.



Coulton Tree Services

Coulton Tree Services are local, professional Arborists, covering all aspects of tree work.

- Professional Tree Care
- Tree removal
- Tree reductions & thinning
- Pruning
- Fruit tree pruning
- Deadwood removal
- Hedgecutting
- NPTC qualified Arborists
- ISA member
- Fully insured

Call Max to arrange a free quotation

01491 282302

07824617377

www.coultontrees.co.uk



City & Guilds
NPTC
Qualified



Scott Gesner

07818 244787

gesnergardening@yahoo.co.uk

www.gesnergardening.co.uk

Contact us for a free quotation

PC DRIVE WALLINGFORD

LEARN TO DRIVE

Fully qualified, DSA approved instructor.

Local, calm, friendly and professional tuition.

Pre-test to post-test courses.

Pass Plus registered.

Dual controls.

Air conditioning.

PETER COSFORD (ADI)

OFFICE: 01491 825091

MOBILE: 07989 352325

LAWNCARE

**GARDEN MACHINERY
SALES, SERVICE & SPARES**

LODGE FARM
OLD READING ROAD
CROWMARSH
WALLINGFORD
OXON OX10 8BW

Agents for:
Mounfield ~ Westwood ~ Echo
& many others

Briggs & Stratton service centre

TEL 01491 836060

Fireplace Magic

Woodburners, Fires & Fireplaces

- Installation
- HETAS registered
- Woodburner servicing
- Chimney sweeping



Showroom at: 45 Prospect Street, Caversham RG4 8JB

Telephone: 0118 9463060

www.fireplacemagic.co.uk



Become a support worker and change someone's life

We are recruiting locally and have full and part time **support worker** and **relief support worker** positions available in our South Oxfordshire and Berkshire service.

You will be supporting people with learning disabilities, encouraging independence in the practical aspects of their lives and helping people to have fun doing the things they love to do.

You don't need experience of support work or any special qualifications for this job as we will provide all the training you need.

What matters most is a positive attitude and a real desire to support people with learning disabilities.

To find out more, or to apply to join our friendly team, call us on **01235 827605** or visit hft.org.uk/jobs

Registered charity No. 313089 Company registered in England No. 734984

A curricle accident

On 30th September 1803, two persons dressed as gentlemen were travelling in a curricle between South Stoke and Crowmarsh. A curricle was a 19th century equivalent of today's sports car, and was a two-wheeled carriage pulled by two horses side by side which was very popular with young men at the time.

When going down the hill near Little Stoke, one of the horses began to kick violently, so the two occupants jumped out and one of them sustained a severe double fracture to his right leg. In this state he laid for several hours in the road until help arrived to take him to South Stoke which was the nearest village.

The injured man would only allow the most eminent surgeon in the neighbourhood to treat

him. James Flamank, of Wallingford, was informed and arrived an hour later. He did everything he could to treat the patient, who by now had become a very urgent case. Because he was worried about the effects of shock which the patient was beginning to show signs of, he sent for a consultant from Reading. The consultant took nearly eight hours to arrive.

Unsurprisingly, in the early hours of the following day the patient died, possibly from the effects of shock. It had taken some 12 to 14 hours before he had received any treatment.

As a further twist to this sad story the other passenger, who was uninjured, was discovered to be a woman. She had lived with the deceased (who was a married man) as a servant for many years.



The Bronze Age and Iron Age in Wallingford

The results of excavations at Slade End Farm

This latest talk at The Wallingford Historical and Archaeological Society (TWHAS) will be given by Gerry Thacker of Oxford Archaeology.

The talk will focus on the proposed Slade End Farm housing development in Wallingford, which covers some 20 hectares (200,000 sq.m). This site was unusual for the Thames Valley, in that Roman archaeology was almost entirely absent. The presentation will discuss the prehistoric remains, with some attempt to place these within the wider landscape, especially in regard to previous investigations around the town.

Slade End Farm archaeology dates from the Mesolithic era to the late Iron Age, with relatively few gaps in between. Although earlier remains are present, the site really comes alive in the middle Bronze Age when we see the advent of the first true field

systems, of a type we may recognise in today's agricultural landscape. During the late Bronze Age / early Iron Age, a double alignment of pits was excavated along the southern boundary of the site, and a later Iron Age crouched burial was inserted into one of these. The talk will also describe the extensive Iron Age settlement of the site, when numerous roundhouses were present, along with waterholes and grain storage pits and platforms.

Our previous talk about the Winterbrook excavation will be briefly discussed to describe some of the findings from that site and how they relate to Slade End Farm.

Our speaker, Gerry Thacker, has worked for Oxford Archaeology for some 20 years, and is a Senior Project Manager specialising in running large-scale rural excavations throughout the Thames Valley and beyond - although he has dabbled in everything from the Upper Palaeolithic through to industrial era sites.

The talk will be on Wednesday 9th October, 7.45 for 8pm, at St Mary's Church, Wallingford. Visitors (£4) are most welcome.

Katharine Keats-Rohan
www.twhas.org.uk



A Night at the Museum

Wallingford Museum will have a special one-off evening opening at half price (Adults £2.50, accompanied children free as usual), on Friday 25th October (6 to 9pm), offering a chance to see our current exhibitions and also take a look behind the scenes at a time when we are usually closed. You can also find out more about how the museum is run and what opportunities there are to join the team of volunteers!

Stu Darby

Your very last chance to see.....

There is a last chance to see this year's special exhibition 'Once upon a time... - the changing face of Wallingford', as the Museum closes for the winter on the 30th November, to prepare for new presentations in 2020.

This exhibition is about how we connect with times past by exploring Wallingford's history and archaeology. Wherever we live, the familiar surroundings of our houses, our streets and our town, can remind us of the people that came before us, their work and their lives shaping our present and our future.

In this engaging journey of discovery throughout the museum, you'll be invited to share any local knowledge you may have and to reminisce about your own history. Old and young alike can enjoy hands-on activities, discovering the secrets of garden archaeology and tracing the passage of time through photographs and objects, all of which reflect the changing face of Wallingford.

The exhibition runs throughout the museum, with a sheet to guide people round. There are hands-on things for children - a Family Friendly experience.

The Museum is open until 30th November on Tuesdays to Fridays from 2pm to 5pm, and on

Saturdays from 10.30am to 5pm.

Judy Dewey
www.wallingfordmuseum.org.uk

Summary of What's On at Wallingford Museum

Tuesdays to Saturdays - Wallingford Museum's new exhibition 'Once upon a time... - the changing face of Wallingford.'

9 Oct - TWHAS talk: 'The Bronze Age and Iron Age in Wallingford: the results of excavations at Slade End Farm'

Fri 25 Oct - 'A Night at the Museum'

April 2020 (Saturday mornings) - Wallingford's Guided Historic Town Walks will start again.

Wallingford U3A

On 2nd October we will welcome back our speaker, Dr Martin Holmes, an Oxford historian whose visits are eagerly awaited, with "John Major ... A Reputation Revised". Dr Holmes is brilliant, entertaining and breathtakingly knowledgeable. He takes few prisoners. Relevant always, his views should, at the moment, be especially interesting.

On 6th October we are off to Cornwall for our annual holiday. We will start organising the 2020 holiday soon after we get back.

Our Sunday Lunch Group is reconvening now it is autumn. We meet in local pubs. It is like a family lunch, but no 2-year-olds, no teenagers and no washing up. For more information phone Lee on 838478.

On 30th November we are booked to see "Singin' in the Rain" at Sonning Mill. Lunch and the Matinee. This is always a popular outing.

We meet at 2pm on the first Wednesday of each month at Crowmarsh Village Hall. Visitors are always made welcome. Our website is: u3asites.org.uk/Wallingford. If you would rather speak to someone, please phone Jill on 835994.

CTC Wallingford

Cycling UK bike rides from Wallingford for October:

Sunday 6th 9:30am, 22 mile road ride - Peter Wood leading, out through Ewelme and Ipsden to Goring Chocolate Café. Return through South Stoke, North Stoke and Mongewell. Includes a few short-ish climbs and a brief section of off-road track.

Sunday 20th 1:30pm, 30-something mile road ride - route and leader tbc

All rides depart from Wallingford Market Place and will include a refreshment stop.

Further details are available on our website (<http://www.ctcwallingford.org.uk>) and Facebook page (log in required, <https://www.facebook.com/groups/wallingfordctc>).

If you have questions about any of the above or other aspects of CTC Wallingford please email us - info@ctcwallingford.org.uk

We hope to see you on a ride soon.

Happy cycling!

Henley and District Stamp Club

If you enjoy 'collecting' and your hobby includes postcards, old letters or stamps, why not share it with others who have the same interest? It's much more enjoyable and fun than doing it on your own! And it's a way of making new friends too.

Our October meetings are:

9th October – Two members give displays.

23rd October – Members from High Wycombe Philatelic Society give displays.

Meetings are held on the 2nd and 4th Wednesdays of the month at Bix Village Hall at 7.45pm. Visitors and new members are welcome. Further details can be obtained by phoning 681739 or on our website: www.henleyphilatelic.org.uk

Oxfordshire Suicide Prevention Survey

Oxfordshire residents who have been affected by suicide are urged to give their feedback to help shape a suicide prevention strategy.

Between 2016 and 2018 there were a total of 155 deaths by suicide in Oxfordshire. Of these, 126 of these were men, which means that deaths in men outnumbered those in women by 4:1.

The Oxfordshire suicide prevention group is about to revise its action plan and develop a strategy. It wants to hear from people in Oxfordshire who have been affected by suicide or who may have had suicidal thoughts themselves.

There is a determination to reduce the numbers of death by suicide therefore we are asking residents to complete the survey at: www.oxfordshire.gov.uk/suicidepreventionsurvey to help achieve this understanding.

Wallingford and District Stroke Club

Wallingford and District Stroke Club meets on the fourth Thursday of each month at Crowmarsh Village Hall for activities and companionship, tea and cake. In the summer months we arrange outings, both locally and further afield, using the Wallingford Coach with its accessible platform.

We'd love to welcome more members (fees are very reasonable at £2 per month). If you, or someone you know, would like to join us – or just give us a try – please contact Norman Goodall on 01235 834503 or Nigel Hessey on 01491 651114 and we'll be pleased to talk to you.

To book North Stoke Village Hall

contact Nikki Arnfeld
(839736, narnfeld@yahoo.co.uk) or
Stuart Soames
(836058,
sjwsoames@btinternet.com)

The Corn Exchange

Please visit www.cornexchange.org.uk for full programme of events.

Cinema

Highlights this month are *Downton Abbey* and *Judy*. All regular performances normally start at 7:30pm unless stated otherwise. Tickets £8 for Adults and £5 for under 15 unless otherwise stated.

Live Shows

Friday 4th October 8pm, Croft and Pearce Comedy Show, Tickets £12 - This fabulous duo is back again in Wallingford. Book soon to avoid disappointment. They're sure to entertain as they have on the last few occasions.

Wednesday 16th October to Saturday 19th October 7:45pm, Sinodun Players present *Blood Wedding* by Federico Garcia Lorca. This is based on the true story of a passionate and repressed love affair where the concept of human fatality is inevitable.

Live Screenings

Tuesday, 1st October 7pm, NT Live: *One Man, Two Guvvors*, Tickets £15 (adults), £12.50 (seniors), £10 (under 18s). Pre-recorded in 2011, the hit play by Richard Bean, based on 'The Servant of Two Masters' by Carlo Goldoni, starring James Corden.

Monday, 21st October 7pm, Royal Opera: *Don Giovanni*, Tickets £15 (adults), £12.50 (seniors), £10 (under 18s). Delayed live screening from the Royal Opera House, Covent Garden. Sung in Italian with English surtitles.

Tuesday, 22nd October 7pm, NT Live: *A Midsummer Night's Dream*, Tickets £15 (adults), £12.50 (seniors), £10 (under 18s). From the Bridge Theatre in London, filmed in front of an audience.

Thursday, 24th October, Royal Opera: *Don Pasquale*, Tickets £15 (adults), £12.50 (seniors), £10 (under 18s). Live screening from the Royal Opera House, Covent Garden. Sung in Italian with English subtitles.

The Landscape Group Oxford

GARDEN, GROUNDS & PROPERTY MAINTENANCE

We are a local business delivering:

- Garden and Grounds Maintenance
- Fencing and Tinting
- Hedge Cutting and Tree Work
- Drives, Patios and Landscaping
- House and Garden Clearance

Following their closure, we have taken on the customers, equipment and staff in Businessfield Community Business and offer the same quality and value.

£10 million Public Liability Insurance, Trading Standards Approved, Safeworkshop Accredited, HSE & Lifting Qualified



DW

Dougie White

Bespoke Carpentry & Home Improvements

(+44) 07799892592

dougiwhite73@gmail.com

ARBOCARE

TREE SURGERY LTD

Qualified and Experienced Arborists

Established over 25 years

Contractors to the National Trust

Free Phone: 0808 1555815

Mb: 07778811136

WWW.ARBOCARE.CO.UK

COULTON

Plumbing & Heating

A local family business, providing a professional and quality service.



Specialists in Oil & Gas



- Boiler Servicing, Maintenance & Replacement
- Landlord Gas Safety Certificates
- Heating System Maintenance & Installation
- Cylinder Repair & Replacement

01491 824486

info@coultonplumbing.co.uk



www.coultonplumbing.co.uk



Your Local Painting & Decorating Professionals



Providing High Quality Decorating For Your Home & Business

01865 400208

Fully Insured
Professional

www.shdecor.co.uk



For **ALL** your printing needs:
Business Cards • Letterheads
Comp Slips • Invoices
Leaflets • Magazines/Journals
Corporate & Wedding Stationery
b/w or full colour - no job too small
for **FREE** quotation
(01491) 836282 or
Email: print@albry.co.uk

UNIT 2, ROCKFORT ESTATE,
HITHERCROFT ROAD, WALLINGFORD, OXON. OX10 9DA

NEW COLOUR COPYING FACILITY

Carpet & hard floor care

Vacuum cleaners, bags, filters, spares & repairs
Carpet cleaning machines, shampoos & deodorisers
Rotary floor polishers, pads, wax & polish. Scrubber-driers



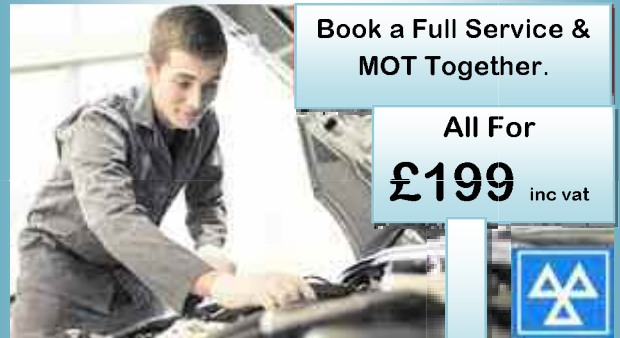
01491 825600 www.machinesthatclean.com

St. Peter's Street Shops, Wallingford, OX10 0BG (behind Champions)

Roy Windebank Auto Engineer

SERVICE & REPAIRS TO ALL MAKES

CAR SALES



Book a Full Service & MOT Together.

All For
£199 inc vat



Quality Used
Cars For
Sale!!

+ FREE engine
Flush worth £9.99

> Free Local Collection & Delivery

> Free Courtesy car's

Give us a call today!!

Cholsey— 01491 652345

Crowmarsh— 01491 824256

www.RefreshPro.co.uk



Exterior Excellence - Specialist Cleaning

* Patio/Drive Cleaning * Gutter/Facia Cleaning

* Reach & Wash Pure Water window cleaning

Pictures speaks for more than words, please see our gallery at www.refreshpro.co.uk.

We are a reliable, local family business based in Crowmarsh providing a professional service to Oxfordshire and the surrounding areas

*Domestic & Commercial *Free quotes on all services *Full public liability insurance

Tel: 01491 833937 Mobile: Kevin 07772416465 Email: info@refreshpro.co.uk

WILL ON THE GREEN

REFRESH - RENOVATE - RESTORE

Painting, decorating and handyman service
Fixing the things you haven't got the time to

Contact Will Maggs for a free quote on any job
Fully Insured

LOOKING AFTER AND MAINTAINING YOUR HOME

E: willonthegreen@bt.com
M: [01491923441](tel:01491923441)



Tom Cottrell Landscapes

Est 1974 Family Run Business

Telephone: 01491-836974

All tree aspects – David Cottrell

Felling, Reducing, Reshaping
Thinning, Removal, Pollarding
Shrub & Tree Pruning
Dead Wood Removal
Hedge Management
Stump Grinding

Garden & Landscaping Services

Turfing, Hedge & Grass Cutting, Planting
Fencing, Patios
General Garden Maintenance
Garden Renovation & Construction
Woodchip Mulch
Seasoned Logs & Kindling Wood

Web: www.tomcottrelllandscapes.com

Email: tomcottrelllandscapes@gmail.com

Orchard Cottage, High Road, Brightwell-cum-Sotwell, Nr Wallingford, Oxon OX10 0PS

**SHOE
REPAIRS**

**Leather
Stitching
Repairs**

**KEY
CUTTING**



FEET FIRST
Quality Shoe Repairs



Contact **GARY**

21 St. Mary's Street Wallingford.
Telephone (01491) 825224

Watchstraps
Batteries

Travel Goods
Luggage

Please make use of the
Parish Council web site
for news and updates of local affairs

<http://crowmarshgifford.org.uk>

To book the Pavilion or Hardcourt
area in Crowmarsh...

phone Chris Strange on 07711 904252,
or
e-mail chrisstrange47@gmail.com

MEET - DRINK - EAT



**Opening hours
October - March**

Monday - Sunday 8am - 6pm

Apply for the waterfront reward card:
Collect points on everything you love



**Available for private functions and
parties throughout the year
Heated riverside seating area
Food & Drink served all day**

Benson, Wallingford, Oxon, OX10 6SJ
info@waterfrontcafe.co.uk

WATERFRONT CAFE
BAR-BISTRO

01491 833732

www.waterfrontcafe.co.uk





St Mary Magdalene's Church Crowmarsh Gifford

Team Vicar: The Rev'd Kevin Beer
34 Thames Mead
Crowmarsh Gifford. OX10 8EY
Tel: 01491 599873

Email: teamvicar@wallingfordcofe.org.uk
Churchwardens:
Margaret Foster, tel: 836076
Eva Thompson, tel: 201675

Services for October

Sunday 6th	11am	Harvest Festival Family Service
Saturday 12th	10am-Noon	Crowmarsh Community Café at the Village Hall
Sunday 13th	11am	Parish Communion
Sunday 20th	11am	Parish Communion
Friday 25th	7pm (for 7.30pm)	Quiz'n'Chips
Sunday 27th	11am	Family Communion

Morning Prayer - every Friday at 9am
Evening Prayer - every Sunday at 6pm (switching to 4pm when clocks change)
Full details at www.wallingfordcofe.org.uk/calendar

Thank you to everyone who supported our Autumn Fair and Fun Dog Show last month - it was a wonderful community event which raised around £1,500 towards our church running costs.

The Autumn season also brings our Harvest Festival Family Service at 11am on Sunday 6th October. At Harvest, we recognise our dependence on nature and the climate and the need to work with them to produce the things that we rely on – not just food and drink, but even the air that we breathe.

Concern for the environment is deeply rooted in Christianity and the Bible, from Genesis - where humans were given the responsibility as stewards of God's creation in the Garden of Eden - through to "a new heaven and a new earth" at the end of Revelation. However, this final picture of the new earth is one which encompasses redeemed aspects of the present earth, finally free from exploitation and oppression. This is not a distant hope but something that Christians are called to actively work for.

Awareness of the harm that we are doing to

our planet and environmental issues should help us to reflect on our lifestyles and choices. Much of this is just good common sense based upon science which challenges every person to reduce their carbon footprint and our dependence on plastics, among other things. But for the Church of England there is also a religious obligation to respect all life as created by God.

Think of St Francis of Assisi (1182-1226, who is remembered on 4th October) – he wrote the original words that became the hymn "All creatures of our God and King" in which all creation is united in praise of the Creator. Indeed, one of the five 'marks of mission' of the Anglican Church worldwide is "to strive to safeguard the integrity of creation, and sustain and renew the life of the earth".

As our Archbishop Justin Welby says: "As a Christian, responding to the #ClimateEmergency is not optional — it's essential. We're called to protect God's creation and love our neighbour."

**Blessings,
Rev Kev**

Useful telephone numbers

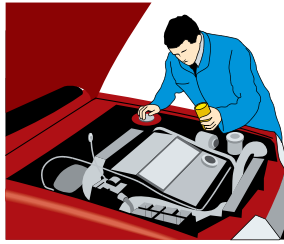
Crime Stoppers 0800 555 111
Police non-emergency number 101

Short Mat Bowls

takes place at the Pavilion on Tuesdays and Thursdays at 2pm. For more information, please call Don on 202543.

ALLAWAY AUTO ENGINEERS

Approved M.O.T. Test Station



Now carry out pre-booked M.O.T.'s for Motor Cycles while you wait.
Servicing and repairs for Cars, and Motor Cycles
Tyres supplied and fitted.

Open Mon - Fri 8.30am-5.30pm

Saturday 9am-1pm

Unit D Whiteley Road
Hithercroft Industrial Estate

Wallingford

Tel: 01491 833116

Warmingham

www.warmingham.com

At home, or on the move.... Your ideal home page!



Log in & get moving..

Having celebrated successive record breaking years in 2016 & 2017, we've done it again in 2018. Please join us to realise your property aspirations!

Having been established for over 34 years, you can be assured of an exceptionally thorough & professional approach from our highly experienced & qualified personable team, who both understand the current market place and yield extensive local knowledge.

Our extensive 7 days a week marketing activity utilises the very best image-based technology available from marketing inception to completion, with enhanced professionally printed medias, prominent local press publications including The Henley Standard, Newbury Weekly News, The Herald, and The Chronicle, and core online medias such as Rightmove, Zoopla, PrimeLocation, OnTheMarket, Facebook, Twitter, Pinterest, and Instagram, all being employed to great effect, with every lead uniquely harnessed by our bespoke cross platform database & interactive website, proactively managed by each team member daily to ensure every marketing opportunity possible is capitalised upon.

Covering a wide-reaching marketing area across Berkshire & Oxfordshire, in 2018 (01/01/2018 - 31/12/2018), Rightmove, the UK's leading property portal, recorded for another successive year running that Warmingham & Co had successfully agreed more sales & lets on properties than any other estate agent's office within our area (OX10 7 / OX10 8 / OX10 9 / OX10 6 / RG20 6 / RG20 7 / RG2 5 / RG2 6 / RG4 9 / RG4 7 / OX11 6 / OX11 9 / RG10 9 / RG10 6 / RG10 5 / RG10 6 / RG10 9 / RG10 8 / RG10 7 / OX14 4 / OX14 5 / OX15 5 / OX12 8), of coverage, greatly surpassing the results recorded by the other 149 sales & 175 lettings offices, and duly highlighting our increased market share and effectiveness on from previous years once more.

Truly offering our clients the most effective, cohesive and progressive marketing package tailor-made to their own individual requirements, locally, nationally, and internationally, we are here to make your next move both seamless, and the right one for you!

Sales & Valuations

T 01491 874144

E sales@warmingham.com

Call us 7 Days A Week to arrange a Free Valuation or Viewing

Office Opening Hours: Monday - Saturday: 08:30 - 18:30 and Sunday: 10:00 - 16:00

Website Opening Hours: 24 Hours A Day - 7 Days A Week - 365 Days A Year

Lettings & Valuations

T 01491 875011

E lettings@warmingham.com



Bob Warmingham



Tina Sheldon



Duncan Kent



Karen Spiers



Laura Ross



Paul O'Loughlin



Louise Pasker



George Beck



Naomi O'Loughlin



Alan Readings



Sue Warmingham

DON'T BUY IT HIRE IT!

• PLANT & TOOL HIRE • TRADE & DIY •

We are the hire specialists and stock all your needs - from hand tools to forklift trucks

Service second to none. Competitive prices.
Delivery and collection service.

Open: Mon.-Fri. 7.30am - 5pm Saturday 7.30am - 12 noon
PARKING A PLEASURE!

DIDCOT PLANT

Didcot Plant Ltd, Basil Hill Road, Didcot

01235 814000

www.didcotplant.co.uk

LET with confidence



- Local Family Business
- Specialising in residential lettings and property management
- Over 26 year's experience
- No set up fees
- Competitive rates
- Trust in our experience

Wallingford 01491 824470 / Didcot 01235 375570

info@homebasepropertymanagement.co.uk

www.homebasemanagement.co.uk



Howbery
BUSINESS PARK - WALLINGFORD

Free to use ATM

**At Howbery Park
in The Manor House**

**Come and Visit our Deli Bar/
Coffee Lounge and try our
NEW real coffee machine**

- Freshly made baguettes (available 11am - 2pm)
- A small selection of homemade cakes
- Friendly welcoming staff
- Beautiful surroundings
- Conference room hire available
- Free wi-fi
- Ample Parking

**Open Monday - Friday
8.30am - 4.00pm**

Visit us, or call 822495 for more information.

www.howberypark.com



Online scams

Contact Citizens Advice for rapid help with on-line scams

Citizens Advice has set up a new Scams Action service to help people who have been scammed or defrauded online, or think they might have been.

Call a Scams Action specialist adviser on 0300 330 3003 if you want to report an online scam. You can also call us if you're acting on behalf of someone else who has been scammed. We'll let you know what to do next and give you support with any problems you might be facing.

The Scams Action helpline is open Monday to Friday, 9am to 5pm (closed on Bank Holidays). We don't charge for calls to the helpline but check with your telephone provider for their conditions.

You can also use our "chat" service to talk to an adviser on the web. Chat is available from www.citizensadvice.org.uk Monday to Friday 9am to 5pm.

For more guidance telephone Citizens Advice Consumer Service on 03454 040506 or visit Citizens Advice during opening hours. Details of office locations are on www.citizensadvice.org.uk/local/oxfordshire-south-vale

Funeral help

If you have to organise a funeral for someone and there are no clear instructions in the will, bear in mind that you can organise the procedure without using the services of a funeral director.

The Cemeteries and Crematorium Department of your local authority can offer help and guidance, and there are many sources of help online, for instance the Natural Death Centre

at www.naturaldeath.org.uk At the current time, when the high prices charged by funeral companies are under government investigation, an alternative funeral can also cost much less. If you're on certain benefits you might be able to get help paying for the funeral.

Citizens Advice has guidance for people who are planning a funeral for themselves or their near ones:

- Shop around and get quotes from local funeral directors. These quotes can vary surprisingly, sometimes by as much as £2,000. Also, try asking for a "basic funeral" and get the costs itemised so you can see what you are paying for.
- Choose "direct burial" – that way, there is no need to pay for embalming or visiting rights.
- Purchase a biodegradable cardboard or cloth-covered coffin, or a wicker basket.
- A woodland or "natural" burial site is an option. There are 200 of them around Britain and several in Oxfordshire.

For more help, contact Citizens Advice on Adviceline 03 444 111444, or drop in to your nearest Citizens Advice. For locations and opening hours see www.citizensadvice.org.uk/local/oxfordshire-south-vale

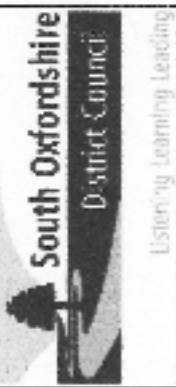
The Shared Lives scheme - Oxfordshire County Council

Sharing a life can change a life

The Shared Lives scheme matches people who need additional support to be independent, with carers and their families. Sharing a family's life means that people who need support can choose to become part of an ordinary household, instead of staying in residential care or being looked after by a team of support workers.

Could you give someone the chance to learn and grow, develop new skills and gain the confidence to become as independent as possible in a family environment?

Become a Shared Lives Carer in a home based, paid role. For more information, please visit oxfordshire.gov.uk/sharedlives



Plan of the new CABl housing development.
Please see p3 of this issue.

Erection of 91 new residential dwellings to be street named and numbered:

- 1 to 25 (Odds Excl. 13) and 2 to 18 (Evens) Halifax Road,
 - 1 to 61 (Odds Excl. 13) and 2 to 22 (Evens) Elizabeth Road,
 - 1 to 17 (Odds Excl. 13) and 2 to 22 (Evens) Hasthorpe Road,
 - 1 to 9 (Odds) and 2 to 10 (Evens) Shuttleworth Close,
- Mongewell,
WALLINGFORD

- Access Points**
- ▲ HALIFAX ROAD
 - ▲ ELIZABETH ROAD
 - ▲ HASTHORPE ROAD
 - ▲ SHUTTLEWORTH CLOSE



Key to SNP Content

- ▲ HALIFAX ROAD (Double sided)
- ELIZABETH ROAD
- ◐ ELIZABETH ROAD (Double sided)
- ◑ HALIFAX ROAD (Double sided)
- ◒ HALIFAX ROAD (Double sided)
- ◓ HASTHORPE ROAD →
- ◔ SHUTTLEWORTH CLOSE
- ◕ HASTHORPE ROAD
- ◖ SHUTTLEWORTH CLOSE
- ◗ New 2-4 (Odds)
- ◘ ← HASTHORPE ROAD
- ◙ HALIFAX ROAD →
- ◚ HASTHORPE ROAD
- ◛ ELIZABETH ROAD (Double sided)
- ◜ HALIFAX ROAD
- ◝ SHUTTLEWORTH CLOSE

Street name plate locations shown are indicative only.
Actual locations to be determined on-site.

Gain's Ditch
(source: o3)

Crowmarsh Parish Council News

Chairman: John Griffin, 29 Thames Mead, Crowmarsh Gifford, tel. 838523,

email: johngriffin@phonecoop.coop

Parish Clerk: Sue Rance, 2 Home Farm, Crowmarsh Gifford

Website: <http://www.crowmarshgifford.org.uk/index.php>

Notes of the Parish Council Meeting held at Crowmarsh Gifford Village Hall on Thursday 5th September 2019

Present: Councillors John Griffin (Chair), David Rowley, Liz Ryall, Stephen Sherbourne, Andrew Johnson and Julian Park, Sue Rance (Clerk), Yvonne Peet (Finance Officer), District Councillor Sue Cooper and Mr Jon Grove.

Apologies were received from Councillors David Topliss, Stuart Soames, Ken McCrea, Fleur Stevenson and County Councillor Mark Gray.

Co-option of new parish councillors

We are pleased to welcome two new parish councillors. Jon Grove, a resident of North Stoke, completed a declaration of acceptance of office and joined the meeting. Gaynor Hopkins, a resident of Benson Lane, was unable to be present at this meeting. Both were co-opted with unanimous agreement. We now have the required 12 parish councillors.

Matters from the previous meeting

District Cllr Cooper was asked to check whether the SODC deep cleanse in late August was actually carried out. We had asked them to attend to weeds growing along the footway in Benson Lane but no significant change had been observed.

Wallingford School students, under the leadership of Kevin Brophy, have offered to carry out more environmental work in Crowmarsh Gifford. Cllr Griffin will put them in touch with Cllrs Johnson and Sherbourne with a view to improving the path near the play area at Cox Lane, and work could be done at the nature area.

Thanks were expressed to former councillor Mrs Denise Hall who has agreed to carry out an independent bank reconciliation every three months, as requested by the auditor.

Our letter to the Chief Constable, requesting more police speed checks, has been acknowledged.

Finance

A schedule of payments made since the last meeting was presented and approved. Mr Peter Etchells, who stands in for Chris Strange when required, has been set up on the payroll system.

The accounts for the year to date had been circulated. A full summary for the six months to 30th September 2019 will be presented at the October meeting.

It was noted that approximately £1500 per year is allocated for maintenance of the nature area under a management plan for differential mowing of certain areas to encourage biodiversity.

Cllr Sherbourne and the Finance Officer will meet the contractor to discuss several issues raised about the grass cutting contract. The play area at Robert Sparrow Gardens has not been cut this season. It is uncertain who cuts the upper play field at Park View. An area at Howbery Farm was cut inappropriately.

The council unanimously agreed a donation of £200 to Sue Ryder to support their Hospice at Home service.

Committees, roles and responsibilities

The list of committees and representatives was updated following the changes in membership of the parish council. The list will also be updated to reflect that the parish council no longer appoints a representative to the board of governors at Crowmarsh Gifford Primary School and some external committees no longer meet.

Cllr Julian Park will join the Environment and Recreation Ground Committee and Cllr Jon Grove will join the Traffic and Transport

Committee and will also assist Cllr Stevenson with the parish website. Cllr Ryall will co-ordinate the Emergency Plan after contacting former councillor Mrs Francesca Jones for guidance.

Cllrs Griffin, Topliss and McCrea (subject to agreement) will form a small planning committee, which will meet between council meetings as needed to respond to applications and consultations and take some of the load off the full council meetings.

Some applications (particularly major ones) will need to be debated in the full council. The clerk circulates planning updates to all councillors, who are encouraged to look at the SODC website and raise issues and comments.

District Councillor's report

District Councillor Sue Cooper reported on the South Oxfordshire Local Plan and other matters. See the District Councillors' Report elsewhere in this issue.

Review of strategic priorities

The council's high level of reserves was very helpful to manage cashflow on the playground project, but our intention is to use our funds to enable other projects in future. We have begun to review and update the strategic priorities list that was drawn up in 2017. We want to invite residents' ideas for any infrastructure projects, new facilities or improvements, and a survey will go out next month, with a revised list of strategic priorities to be issued early in 2020.

Planning

Decisions by SODC

P19/S1860/HH 22 Howbery Farm Crowmarsh Gifford OX10 8NR. Erection of a garden shed. Planning permission granted

Applications and updates

P19/S2624/LB Repairs and redecoration to the external fabric of the building. The Bell Public House, 79 The Street, Crowmarsh Gifford OX10 8EF.
RECOMMEND LISTED BUILDING CONSENT

P19/S2545/HH Crowmarsh Stores, 64 The Street, Crowmarsh Gifford OX10 8ES. Single storey rear extension. This is to the residential part of the premises.

RECOMMEND NO OBJECTION

Neighbourhood plan

An application has been submitted for a grant of £7700 for professional consultancy to help prepare the plan for consultation and submission. See separate article.

Environment and Recreation Ground Committee

A fallen walnut tree on the recreation ground has been removed and a diseased eucalyptus tree will also be removed. New trees will be planted as appropriate.

DBS checks will be done for Mr Chris Strange and his stand-in, Mr Peter Etchells. It was reported that a child had fallen off the climbing frame, resulting in a broken arm. Cllr McCrea has reviewed the safeguarding policy and proposed some amendments. Cllr Johnson will circulate revised wording to parish councillors about the hiring of facilities by organisations. An updated report on toilet access has been circulated. Discussion with the contractors Eibe has covered a number of issues arising since the opening.

It was agreed to ask three architects to quote for plans for a new external toilet at the recreation ground. A single toilet could incorporate disabled and baby changing facilities. The details will be discussed further by the Environment and Recreation Ground Committee.

Traffic and Transport

The brick bus shelter on the Portway was badly damaged by a car and has now been fully demolished by the County Council.

Other business

Overgrown vegetation at the junction of Cox Lane and Portway has been reported to the County Council.

Problems with lorries delivering to Jewsons

have been reported and will be discussed at the October meeting.

Next meeting

The next meeting of the Parish Council will be at North Stoke Village Hall on Thursday 3rd October, starting at 7.30pm. All are welcome to attend.

District Councillors' Report from Sue Cooper and Andrea Powell

The new Council, elected in May with many new Councillors, is gradually finding its feet. Our biggest priority is deciding what to do about the draft Local Plan, which we inherited from the previous Council and which was already submitted to government inspectors. The other major tasks are to put our finances on a sustainable footing and to put actions in place to address the Climate Emergency.

Local Plan

The Council was elected on a programme to reduce the number of houses planned for the District in the draft Local Plan 2034. Unfortunately this is tied to an agreement between the County Council as the highways authority and the Government for £218m from the Housing Infrastructure Fund for road and cycle tracks in the Didcot area, which should have been constructed BEFORE so many houses were built there. We are trying to save this grant, which OCC needs, through discussions with other councils and the Government, while keeping to our commitment on fewer houses in more environmentally friendly developments. We are due to make a decision at our next Council meeting on 10th October.

Budget

The budgeting process for next year is under way. The District, in common with councils across the country, is in difficult financial straits. Over the past five years, the Council has been taking an average of £2m per year from its reserves to balance its budget. At this rate, the usable reserves will last only seven years. Government grants to the District have been severely cut and we are not allowed to

increase Council Tax by more than a small amount each year.

We therefore need to find savings and to increase income, whilst seeking external sources of funding and commercial income. SODC has a very low rate of Council Tax. The average for a typical Band D property for Shire District councils is £186 per year, compared with SODC which charges £121.

Action on climate change

On 19th September we had the first meeting of our new Climate Emergency Advisory Committee. This is charged with finding ways to meet ambitious targets to make the District and Council carbon neutral.

We had such a long list of projects to help achieve these that a small group will examine them and prioritise actions. It will need all residents' help to achieve the targets, so very good communications will be essential so that we all know what we should be doing! In the meantime, how about trying some of the Guardian's 15 ways to help reduce global carbon emissions – see <https://www.theguardian.com/environment/2017/jan/19/how-to-reduce-carbon-footprint>

Councillor Grants Scheme

Each Councillor may award up to £5000 each year as small grants for organisations (not individuals) working on projects to benefit their local area. This year's round of applications, with a closing date in December has now opened.

We plan to coordinate our decision-making on this exercise, so that we get best value for money and are fair and transparent in how we allocate the funds. Please see the SODC website for conditions and more information: <http://www.southoxon.gov.uk/services-and-advice/community-advice-and-support/grants-and-community-loans/councillor-community-grants>

**Andrea.Powell@southoxon.gov.uk
& Sue.Cooper@southoxon.gov.uk**

**Pictures, logos and display ads for the
Crowmarsh News...**
...are best in .jpg or .pdf format.

DIRTY CARPETS, UPHOLSTERY, RUGS



Most carpets dry within the hour

Unbeatable results, removes almost all spots & stains call

GRIMEBUSTERS

01865 726983 01235 555533

www.grimebusters.co.uk

THOMAS MERRIFIELD

Surveyors • Auctioneers • Estate Agents

72 High Street, Wallingford, Oxon. OX10 0BX

Tel: 01491 - 833833 Fax: 01491 - 833055

email: wallingford@thomasmerrifield.co.uk

www.thomasmerrifield.co.uk

GORING & STREATLEY CLINIC

trained

to fight

PAIN



The Community Centre
Station Road, Goring

For treatment of
Ligaments & Muscles
Rheumatism & Arthritis
Sciatica
Backache
Lumbago
Joint Pains
Sports Injuries
Headaches & Stress

01491 873 874
or out of hours
07775 714 300

Natalia Beddoe BSc(Hons)Ost
Registered Osteopath
Victoria Swan MAO
Registered Osteomyologist

CLIVE THE HANDYMAN

Over 35 years experience in the Building Trade

Painting & Decorating
Patch Plastering
Woodwork, Tiling,
Fascias, Roofing/Gutter Repairs,
Repointing, Boxing-In,
Small Plumbing Jobs,
Flat Pack Assembly,
Blinds & Curtain Rails
General Household Repairs
No Job Too Small
All Work Guaranteed
Fully Insured

Give me a ring on 01491 411321 / 07766 540117



CLEANER, GREENER OVEN CLEANING

Ovens | Hobs | Microwaves | Extractors | BBQs

WE PUT THE SHINE BACK INTO THE
INSIDE AND OUTSIDE OF YOUR OVEN!

T. 01491 837420 E. info@proovencleaning.co.uk

www.proovencleaning.co.uk



Beacon Flooring

A Family Run Business

Carpet - Wood - Vinyl - Karndean

Free fitting on carpet orders over £150

16 High Street, Goring on Thames, RG8 9AR
01491 454095 beaconflooring@aol.co.uk
www.beaconflooring.co.uk

P J WITNEY ELECTRICAL

Electrical Safety Register
ELECTRICAL CONTRACTORS ASSOCIATION
ELECSA EEC ECA
Certification Ltd

Extra Lighting & power points ect no job to small
Free estimates

Over 35years of quality workmanship
Phone 01491 837939 Mobile 07740981597
Email peter.witney@sky.com

THAMES SALON
THAMES SALON
THAMES SALON
THAMES SALON
THAMES SALON

Gents Hairdressing

Est. 1958

21 St. Mary's Street, Wallingford
Oxfordshire OX10 0EW
Telephone : 01491 837124

OPENING HOURS

MONDAY	8.30 am - 6.00 pm
TUESDAY	8.30 am - 6.00 pm
WEDNESDAY	Closed
THURSDAY	8.30 am - 9.00 pm
FRIDAY	8.30 am - 9.00 pm
SATURDAY	8.00 am - 6.00 pm

www.thamessalon.com

WHAT'S ON – OCTOBER 2019

Regular events and meetings

Every Thursday	19.45-22.00	Wallingford Photographic Club	Crowmarsh Pavilion
Every Friday	09.30-12.00	Wallingford Country Market	St Mary's, W'ford
Every Saturday	10.00-12.00	WAGS Store open	Centre 70
Most Saturdays	10.00-13.00	Local Producers' Market	St Mary's, W'ford
Every Sunday	11.00	Parish Communion; Family service first Sunday of month	Crowmarsh Church

This month

Wednesday 2nd	14.00	U3A: John Major-A Reputation Revised	Village Hall
Thursday 3rd	19.30	Crowmarsh PC Meeting	North Stoke Village Hall
Saturday 5th	10.00 -13.00	Sustainable Wallingford Repair Cafe	Centre 70, Wallingford
Sunday 6th	09.30	CTC 22-mile road ride	Meet Wallingford Market Place
Sunday 6th	11.00	Harvest Festival Family Service	St Mary Magdalene Church, Crowmarsh
Wednesday 9th	19.45	TWHAS: The Bronze Age and Iron Age in Wallingford	St Marys Church, Wallingford
Wednesday 9th	20.00	Henley Philatelic Society: Member Displays	Bix Village Hall
Saturday 12th	10.00-12.00	Crowmarsh Community Café	Village Hall
Saturday 12th	10.30	Sue Ryder Sale	Nettlebed
Sunday 20th	13.30	CTC 30-mile road ride	Meet Wallingford Market Place
Wednesday 23rd	20.00	Henley Philatelic Society: High Wycombe Visits	Bix Village Hall
Friday 25th	19.00	Quiz'n'Chips	St Mary Magdalene Church, Crowmarsh
Saturday 26th	All day	Trains: Halloween Trains	Cholsey & Wallingford Railway

November

Saturday 2nd	10.30	Sue Ryder Sale	Nettlebed
Saturday 2nd	18.00 -21.00	Bonfire and Fireworks	Kinecroft, Wallingford
Wednesday 6th	14.00	U3A: Mapledurham Watermill	Village Hall
Thursday 7th	19.30	Crowmarsh PC Meeting	Village Hall

For details of walks with Didcot & Wallingford Ramblers, please see www.ramblers.org.uk/didcot-wallingford