

Crowmarsh News

Issue 479

August 2018

The *Crowmarsh News* is a self-funded publication, and we regret that we are unable to accept unpaid advertising, even from local businesses and societies.

We welcome material for inclusion but do not necessarily endorse the views of contributors. We reserve the right to refuse material or to shorten contributions as may be appropriate. Editorial decisions are final.

ADVERTISING RATES

The *Crowmarsh News* is currently distributed to over 700 households in Crowmarsh Gifford, North Stoke and Mongewell.

Our rates for a one-eighth page display advertisement (nominal 9cm wide x 7cm tall) are:

1 month – £8.50
3 months – £25.00
6 months – £45.00

Please note new rates!

Leaflet distribution

For a single sheet loose insert in the *Crowmarsh News* (size up to A4), our current rate is £30.00 for a single month. Advertisers must supply their own inserts (740 copies, please).

Cheques should be made payable to Crowmarsh News Association.

The Crowmarsh News Team

The *Crowmarsh News* is run by the Crowmarsh News Association, a group of local volunteers.

Editorial and Layout: James and Toni Taylor, Kirsty Dawson, Amanda Maher

Editorial support: John Griffin, Rev Kevin Beer

What's On listings: Julian Park

Advertising: Pat Shields

Distribution: Frank Sadler and Team

Next month's issue

All new advertisements and all copy for the September issue of *Crowmarsh News* must reach us before our **20th August deadline**.

For all items of news, articles or correspondence, please e-mail

crowmarsh.editor@gmail.com

or deliver to the Editors at 57 The Street.

For all advertising, please contact

crowmarshadvertisers@gmail.com

or deliver to The Old School, Benson Lane.

Is your garden working for you?

Whether you want to transform your garden or just make it more manageable, GreenArt can help. We've designed, built and improved hundreds of gardens for over 20 years. We offer a professional service and take pride in our work.

Call: 01491 280447/07901 977290
email: info@greenart.uk.com

www.greenart.uk.com



GA Electrical & Mechanical

Your local electricians and plumbers, for small or major projects

Quality Service Peace of Mind Creative problem solving

01491 835875

reception@
gaelectricalandmechanical.co.uk

www.gaelectricalandmechanical.co.uk



HOWARD CHADWICK

A caring family owned and managed Funeral Service

- *Dedicated Private Chapel of Rest •*
- *Golden Charter Pre Paid Funeral Plans •*
- *Specialists in Memorial Stones and Designs •*

33 Benson Lane, Crowmarsh,
Wallingford OX10 8ED
Tel: 01491 825222



DANCE FITNESS CLASS
Tuesdays
Crowmarsh Village Hall
9.45-10.45am (60+)
11-12noon
7.30-8.30pm

Fun sessions, everyone welcome
Just come along or contact Andrea for more
information: 0771 7023 007 or email:
turners.the@icloud.com

**SHOE
REPAIRS**

**Leather
Stitching
Repairs**

**KEY
CUTTING**



FEET FIRST
Quality Shoe Repairs



Contact **GARY**

21 St. Mary's Street Wallingford.
Telephone (01491) 825224

Watchstraps
Batteries

Travel Goods
Luggage



Look good...
feel good

Forresters Wallingford has
built its reputation as a centre
of excellence and showcase
for cuts and colour.

For more information about offers
and promotions or to book a FREE
consultation, contact us today.



You can
now book
online

01491 837 523 Forresters4Hair.com

Find us at: 25 High Street, Wallingford. OX10 0BU

G.R. Galliford

Graham

07762650809

01491 824583

Mini Digger with Operator

Block Paving

Driveways

Patios

Fencing

Drop Kerbs

Groundwork



CROWMARSH TYRE

BALANCING, TRACKING
& PUNCTURES. LARGE
STOCKS OF LEADING
MAKES

AND
EXHAUST CENTRE

01491 834088

BEADLE ESTATE, HITHERCROFT ROAD,
WALLINGFORD, OXON. OX10 9GW



BATTERIES,
COMPREHENSIVE
STOCK FOR BRITISH,
JAPANESE AND
EUROPEAN CARS
24 MONTHS
UNLIMITED
MILEAGE
GUARANTEE



John Bellamy

We are very sad to inform readers that John Bellamy died, peacefully at home, on 20th July at the age of 86.

John was "Mr Crowmarsh" in so many ways and a lot of what we have in our community today, our first class recreation ground in particular, is down to his vision, determination and sheer hard work. John with his wife Edwina produced the *Crowmarsh News* for over 30 years, and he chaired the parish council until 2007.

As the news reached us on our print deadline, there has been insufficient time to prepare a fuller appreciation. However, we hope to be able to put together a celebration of his work for the community in the next issue.

The Crowmarsh News Team

Fire-Damaged Council Offices to be Demolished

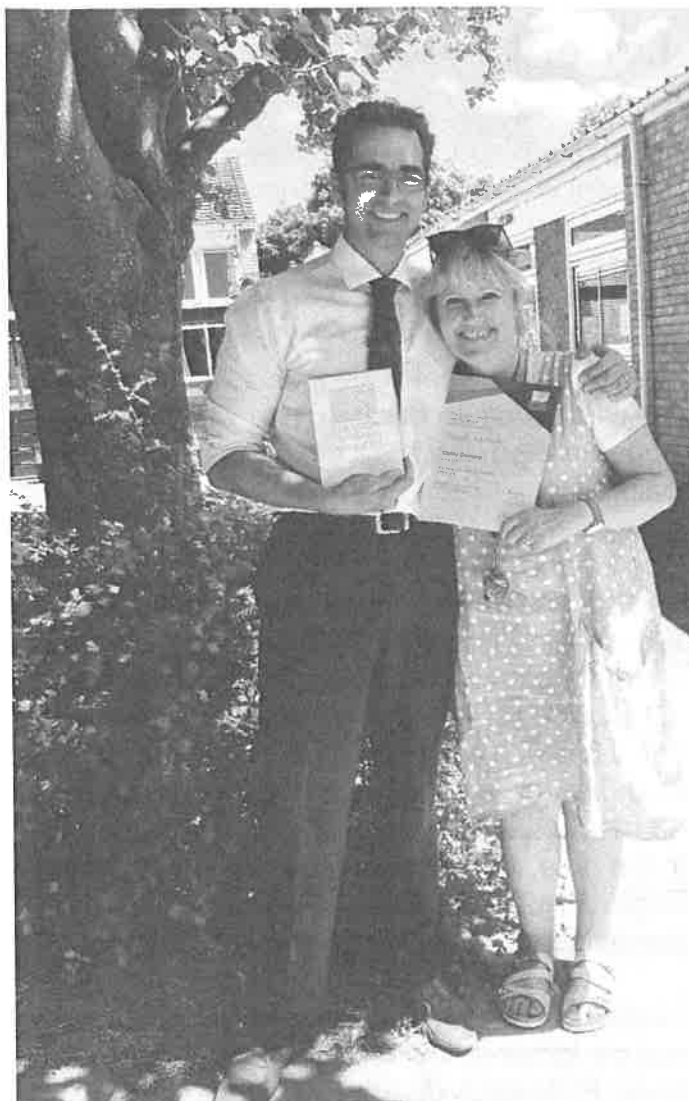
The former headquarters of South Oxfordshire and Vale of White Horse District Councils are set to be demolished after the building at Benson Lane, Crowmarsh Gifford, was severely damaged in an arson attack in 2015.

A specialist demolition contractor has been appointed and will be on site from Monday 16th July, carrying out preparatory works ahead of demolition.

Cllr Jane Murphy, Leader of South Oxfordshire District Council, which owns the site, said: "We're working closely with our contractors to minimise disruption to neighbouring residents once demolition work begins and I'd like to thank them in advance for their patience. We're also very grateful to all of our residents and local communities for their understanding during the time that's passed since the fire."

The councils moved temporarily to the Milton Park Estate following the fire. Demolition is expected to take around four months.

Please also see David Beasley's *Past Times* on page 6, for the story behind the Council Offices and the fire.



and the summer holidays in sight, there is a temptation to cool off in one of Oxfordshire's many rivers and inland waterways. And while there may not be any river monsters waiting down there, unfortunately rivers and waterways can be very dangerous places - 255 people accidentally drowned in 2017 in the UK.

That's why, at this time of year, Oxfordshire's Fire and Rescue Service is reminding all residents to Be Water Aware to help everyone stay safe this summer.

Would you know what to do?

Knowing what to do when someone gets into trouble in the water could help save someone's life:

Call: 999

Float: tell them to float on their back

Throw: something that floats

... and don't jump in yourself

Find out more at
www.365alive.co.uk/BeWaterAware

Letter to the Editor

In 2016 we had a fire that destroyed 98 percent of everything we owned. It was traumatic to come home and find the only things you had were what you had on and the old coat that you left in the car for the dog to sit on. The worst was when we discovered our precious dog Basil had lost his life in the fire. He was found on our bed, and we sincerely hope he died of smoke inhalation, feeling no pain.

The kindness we received from neighbours and people of Crowmarsh really helped us. Kind letters, the offers of help, a hug, and words of comfort really made a difference to us. Putting up with me bursting into tears when I saw a dog. I still have problems with this even though my daughter has found us a little 13 year old cocker spaniel who has helped fill in the hole. Our shop has been a great place to get comfort and cheer. The girls are understanding and midst it all warm and cheerful.

Luckily we have a wonderful family. Our son and daughter-in-law took us in hand right away. Picking us up from dear John our neighbour, who had rescued us amid the chaos, they rushed us into Reading before the shops shut to buy essentials; then our granddaughter let us use her room for the night.

My daughter and son-in-law were away, but even so immediately organised that we stayed in their home until a rentable place was found. And we were not forgotten. Visitors from Crowmarsh came to see us, and their visits were so welcome. Thank you so much, Crowmarsh. Such a friendly village.

We are now back at home. We would like to thank the Fire Service for being understanding, dealing with a shocked and weepy woman with just the right amount of care. Our dear immediate neighbours, the lovely dog walkers who knew Basil and sent such lovely letters, the girls in the shop. And so many kind people who are Crowmarsh. And above all our son who initially sorted the insurance and daughter who took on the interior decoration, sorting the kitchen, bathroom and so many things that were needed to make us this happy and – might I say it – decluttered home.

PLEASE do not leave anything on electrical or gas when you go out.

Love to you all

**Brian and Eve Hunt
Newnham Green**

Music at St Peter's, Wallingford

It's high summer and high time you joined us if you haven't already!

We've one rather special concert this month – Mary Plazas was brought up in this area, and her remarkable singing voice led her from Didcot Girls' School to the Royal Northern College of Music, and launched her international operatic career.

Mary has close links with us – she's been our president – and has put together a lovely programme of French and Spanish music, along with pianist Nancy Cooley – another local girl – and newcomer Andrew Thurgood on the violin. That's on Saturday 18th August, 8pm at St Peter's Church, Thames Street, Wallingford.

You can buy tickets on-line – go to www.musicatstpeterswallingford.org.uk, or buy at the door. Tickets bought this way cost £15. You can buy in person in advance from Just Trading, 17 St Mary's Street, Wallingford, or by post – that will cost £13 per ticket. Pick up a brochure for full details, or call Laurence on 01865 343336 who will send you one, or visit our website.

Tennis court hire

at Crowmarsh Gifford recreation ground.

£4 per session or £30 per annum.

To book, phone or text Chris on 07711 904252.

Access by keypad on the gate
(code changed regularly).



Coulton

Tree Services

Coulton Tree Services are local, professional Arborists, covering all aspects of tree work.

- Professional Tree Care
- Tree removal
- Tree reductions & thinning
- Pruning
- Fruit tree pruning
- Deadwood removal
- Hedgecutting
- NPTC qualified Arborists
- ISA member
- Fully insured

Call Max to arrange a free quotation

01491 282302

07824617377

www.coultontrees.co.uk



Find us on
Facebook

City &
Guilds
NPTC
Qualified



Beacon Flooring

A Family Run Business

Carpet - Wood - Vinyl - Karndean

Free fitting on carpet orders over £150

16 High Street, Goring on Thames, RG8 9AR

01491 454095 beaconflooring@aol.co.uk

www.beaconflooring.co.uk

ROOM SERVICE

Your Local Friendly Cleaning Company

Providing an excellent, professional service to homes and offices in your area. Daily, weekly, or whenever you need help.

Ginny

07976 883165

roomservices@btinternet.com



LAWNCARE

GARDEN MACHINERY
SALES, SERVICE & SPARES

LODGE FARM
OLD READING ROAD
CROWMARSH
WALLINGFORD
OXON OX10 8BW

Agents for:
Mountfield ~ Westwood ~ Echo
& many others
Briggs & Stratton service centre
TEL 01491 836060

Fireplace Magic

Woodburners,
Fires & Fireplaces

- Installation
- HETAS registered
- Woodburner servicing
- Chimney sweeping



Showroom at: 45 Prospect Street, Caversham RG4 8JB

Telephone: 0118 9463060

www.fireplacemagic.co.uk

MEET - DRINK - EAT



Opening hours
April - September

Monday 8am - 6pm
Tuesday - Sunday 8am - 10pm

Apply for the waterfront reward card:
Collect points on everything you love

Summer evening bistro
Open until the end of September, so make a note to pop by for an evening meal, light bite or drinks!

Food & Drink served all day

Benson, Wallingford, Oxon, OX10 6SJ
info@waterfrontcafe.co.uk

WATERFRONT CAFÉ

BAR-BISTRO

01491 833732

www.waterfrontcafe.co.uk



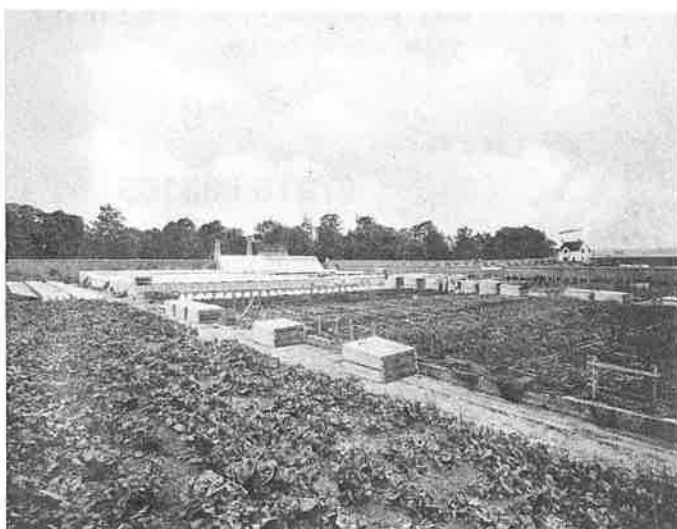
Past Times

from David Beasley

The SODC site

SODC have at last started the demolition of their old fire damaged offices in Benson Lane. It's hard to remember what it looked like before the offices were built on the site, so here are some pictures to jog your memory.

Picture 1 (below) was taken in 1913 when the Howbery Estate was put up for sale by du Cros (it didn't sell) and is of the French Gardens, which is now the site of the car park. The crop being grown in the picture is strawberries. Picking the strawberries was very labour intensive, Du Cros employed a number of Frenchmen and used local school boys at weekends and during their school holidays to water and pick the fruit.



Picture 2 (below) is of the construction of the SODC offices in 1981, looking south towards the flats numbered 9 - 12, in Winter's Field. The offices, despite local protests, were opened in 1982.



Picture 3 (bottom) is of the fire at the offices taken at about 8.00am on 15th January 2015. I had been up from about 3.00am taking pictures. Because there was no fire hydrant on the office site, the Fire Services had to use the hydrant in front of numbers 7 and 8 Winter's Field and punch a hole in the fence in front of number 14 Winter's Field for the hose. This meant that some residents couldn't use their cars as they couldn't drive over the hose.



Useful telephone numbers

Crime Stoppers 0800 555 111

Police non-emergency number 101

Please make use of the
Parish Council web site
for news and updates of local affairs

www.crowmarshgifford.org

Talking Newspaper Needs Volunteer Readers

The Wallingford District Talking Newspaper is a local charity that produces weekly recordings of the *Wallingford Herald* newspaper. It also produces monthly recordings of extracts from Wallingford town, village and parish magazines (e.g. *Window for Wallingford*, *Benson Bulletin*, *Crowmarsh News*, *Ewelme News*, *the Forty* (Cholsey), *The Bridge* (Clifton Hampden), *The Villager* (Brightwell-cum-Sotwell).

These recordings are sent out, free of charge, to visually impaired listeners in the Wallingford area.

We need volunteers to join the team of readers for the recording sessions. We need people who are comfortable reading out loud for weekly recordings of the *Wallingford Herald*. You can decide how often you read and most of our readers do so once a month. A group of three readers and a "producer" meet on a Thursday evening at the Wallingford Methodist Church to make the recording. It takes about one and a half hours to record.

Our visually impaired listeners like to hear a variety of voices – male and female and regional accents, so there is no standard "reading voice". If you feel you would like to take part in this enjoyable and rewarding activity, please get in touch.

As well as readers, we need more "producers". To do this you need to be reasonably familiar with a laptop computer and able to operate a very straightforward software programme that makes recording easy. The recording is transferred to a memory stick at the end of the session and delivered to a copier who sends out the copied memory sticks by post to the listeners. Shortly, we plan to make the recordings available on our website.

If you would like to learn more about the Talking Newspaper and how you can help, please do get in touch with Keith Tibbs on 838689, email keith.tibbs4@ntlworld.com, Betty Pike on 835781 or our website, www.wdtna.org.uk. We look forward to hearing from you.

Wallingford U3A

At our July meeting Dr Jim McWhirter spoke about helping rural mission hospitals in Uganda.

He first went to Uganda in 2009, to Kamali, with the Rotary Doctor Bank. He was hands-on then, delivering babies in ill-equipped, understaffed surroundings. He visits Uganda less often these days, having moved into an organisational role.

Thanks to a Rotary Global Grant they have refurbished the maternity ward and operating theatre, organised vocational training schemes where doctors, midwives, nurses and ancillary staff go to Uganda to help with staff development. They have a scheme through which 4th year medical students from Bristol University go as part of their accredited course.

Dr McWhirter had unstinting praise for the Ugandan medical schools, whose training, he says, is among the best in the world. They just need more. His commitment to and respect for the work that is being carried out by the Ugandan medical services was inspiring. We can only hope Dr McWhirter can come back to give us an update soon.

At our next meeting, on Wednesday 1st August, Marcia Watson will speak on "The work of Great Ormond Street Hospital"

Our September outing, on Wednesday 26th, is to the Postal Museum in London. 500 years of history are on offer, and a ride through hidden tunnels on the mail train. There is a film of this for those who don't like tunnels. The museum is fully accessible for wheelchairs (apart from the train ride). There is also a café. Cost: £31.00. December will bring a trip to see *Guys and Dolls* at Sonning Theatre.

Our meetings are held on the first Wednesday of each month at 2.00 pm in Crowmarsh Village Hall. Visitors are always made welcome for the talk, tea and biscuits, and the chance to meet new friends.

For more information, please visit our website: u3asites.org.uk/Wallingford, or phone Hermione on 01865 858024



Castle Day @ Wallingford Museum

On Saturday 18th August from 11am to 4pm, Wallingford Museum has organised a special Castle Day at the Museum.

This year, the focus will be on Wallingford Castle. Besides displays about the castle and the research that has been done, we shall be asking people to help build a model of Wallingford Castle during the day!

Also in attendance will be our special Castle Knight with a wonderful display of weapons, armour and other things that would have been in daily use in the castle. He is very keen to tell people about how things were made and used. There will also be other 'hands-on' activities for children and adults alike, providing a great opportunity for a family day out with a difference.

Entry is by Museum ticket at the door - £5 per adult (which gives unlimited entry until 30th November) but accompanied children are FREE.

Stu Darby
www.wallingfordmuseum.org.uk

Agatha Christie Day

This year, an event celebrating Agatha Christie in Wallingford and Cholsey will be held on Saturday 8th September.

You can join guided walks from the Town Hall - town history walk at 11am, special Agatha Christie and Midsomer Murders walk at 2.30pm. Visit Wallingford Museum for the Queen of Crime exhibition, revealing her connection with the town. Follow a self-guided trail (or travel by heritage train) to Cholsey, visiting Agatha's grave in Cholsey churchyard.

Other events are being planned. Please check Wallingford Museum's website, www.wallingfordmuseum.org.uk for the latest information.

H Poirot

Wallingford Museum @ BunkFest

Wallingford Museum has three special offers for the town's BunkFest:

Firstly, extended opening hours.

Tuesday to Friday 2pm - 5pm

Saturday 10.30am - 5pm

Sunday 10.30am - 5pm

Secondly, special admission prices.

Between Friday 31st August and Sunday 2nd September, the Museum is offering a special 2-for-1 admission. Two adults can enjoy the Museum for just £5 in total (normally £5 each). Accompanied children are FREE.

Thirdly, a Festival Walk.

On Sunday 2nd September, you are invited to take a gentle stroll around our lovely historic town, ably led by a member of The Wallingford Historical & Archaeological Society. TWHAS is very active in the town, running the Wallingford Museum, researching the town's history and presenting talks throughout the year.

The walk is FREE (donations never refused!), but it would also be an excellent opportunity to combine it with a visit to the Museum to see this year's special exhibitions and to learn the latest local research about Agatha Christie. Meet for the walk at Wallingford Museum at 11am, and be back by 1pm.

Steve Capel-Davies
www.wallingfordmuseum.org.uk

Sue Ryder – Sale Dates

The next Sales of Donated Goods are on Saturdays 11th August and 1st & 22nd September, from 10.30am to 12.30pm.

Saleable donated goods are welcomed on week days between 9am and 4.30pm. We regret we are unable to accept goods on Sale day or the day before.

The Sue Ryder Nettlebed Hospice is at Nettlebed, near Henley, RG9 5DF. Please call 01491 641384 ext 246 for further information.

Short Mat Bowls
takes place at the Pavilion on Tuesdays at 7pm and on Thursdays at 2pm. For more information, please call 837518.

Scouts: Do more. Share more. Be more.

It has been a busy term for Crowmarsh Beavers, Cubs and Scouts and we have made the most of the sunshine with outdoor games and activities. Funnily enough the enthusiasm for water games crosses all ages and these activities were thoroughly enjoyed by all sections!

We had a fantastic family evening with a BBQ and AGM, and many thanks to our Young Leaders (aged 14-18) – who organised games to keep everyone entertained and having fun.

In September we will be back with a loaded programme including opportunities for camps, laser quests, cross country runs, winter hikes, scuba diving, Christmas crafts and many, many more activities. The face of Scouting has changed over the years and whilst we still enjoy traditional activities such as cooking on fires and camping we also get involved with meeting other Scouts across the world using the internet, visiting places of interest such as Legoland, theatre trips and – a firm favourite with all sections – activities involving food!

If you have a young person who would like to join Scouting, please get in touch with us as we currently have some spaces for Beavers (age 6-8), Cubs (age 8-10½) and Scouts (aged 10-14). There are also several excellent, local, Explorer Scout Groups for those aged

14-18 that we can put you in contact with. If you are a student on the Duke of Edinburgh Award Programme we are also able to offer a volunteering position as a Young Leader – so please get in touch.

If you are older than 18 and still love to have fun - working with young people is tremendously rewarding! You are extremely welcome to come along and find out if this is something you would enjoy. We encourage flexible volunteering and understand that time is short and precious so we have roles from helping out for an hour here and there to helping plan and run the weekly meetings. If you would like to volunteer for an adult focused role we are in need of a Group Secretary, fundraisers and someone who is happy to update our website - there is something to suit everyone!

To find out more about Crowmarsh Scout Group, contact Ross Edmonds by sending an email to chair@crowmarshgiffordscoutgroup.org or telephone/text Siobhan on 07703 473250

Beavers meet 5-6pm Monday
Cubs meet 6.15-7.45pm Monday
Scouts meet 7-9pm Tuesday

Slow down in North Stoke!

On behalf of residents of Cook Lane, the Parish Council asks all motorists to respect the 30mph speed limit through the village of North Stoke. Enforcement is a matter for the police, but taking care and driving slowly through speed restricted roads can save lives and injury, not just fines and penalty points. Slow down, please!

Parish Councillor Needed

We have a vacancy for a parish councillor. Preference will be given to someone from North Stoke or Mongewell, areas which are under-represented. We meet once a month: see the parish council notes for an idea of what we do, or talk to any councillor.

The whole council will be up for re-election in May 2019 so it's the ideal opportunity to try it for 9 months. If interested contact Sue Rance, parish clerk; contact details on page 16, or tel 839170, email susanrance@btinternet.com.





OXFORD
PRIVATE CARE

LIVE-IN CARE



'Home, why live anywhere else?'

A real alternative to a residential or nursing home

For more information call us on

01865 861944

or visit

www.opclive-in.co.uk

DW

Dougie White

Bespoke Carpentry & Home Improvements

(+44) 07799891592

dougiewhite73@gmail.com

LPC
DRIVE
WALLINGFORD

LEARN TO DRIVE

Fully qualified, DSA approved instructor.

Local, calm, friendly and professional tuition.

Pre-test to post-test courses.

Pass Plus registered.

Dual controls.

Air conditioning.

PETER COSFORD (ADI)

OFFICE: 01491 825091

MOBILE: 07989 352325

www.RefreshPro.co.uk



Exterior Excellence - Specialist Cleaning

* Patio/Drive Cleaning * Gutter/Facia Cleaning

* Reach & Wash Pure Water window cleaning

Pictures speaks far more than words, please see our gallery at www.refreshpro.co.uk

We are a reliable, local family business based in Crowmarsh providing a professional service to Oxfordshire and the surrounding areas

* Domestic & Commercial * Free quotes on all services * Full public liability insurance

Tel: 01491 833937 Mobile: Kevin 07772416465 Email: info@refreshpro.co.uk

ARBOCARE

TREE SURGERY LTD

Qualified and Experienced Arborists

Established over 25years

Contractors to the National Trust

Free Phone: 0808 1555815

Mb: 07778811136

WWW.ARBOCARE.CO.UK

Tom Cottrell Landscapes
Est 1974 Family Run Business
Telephone: 01491-836974

All tree aspects – David Cottrell

Felling, Reducing, Reshaping
Thinning, Removal, Pollarding
Shrub & Tree Pruning
Dead Wood Removal
Hedge Management
Stump Grinding

Garden & Landscaping Services

Turfing, Hedge & Grass Cutting, Planting
Fencing, Patios
General Garden Maintenance
Garden Renovation & Construction
Woodchip Mulch
Seasoned Logs & Kindling Wood

Web: www.tomcottrelllandscapes.com

Email: tomcottrelllandscapes@gmail.com

Orchard Cottage, High Road, Brightwell-cum-Sotwell, Nr Wallingford, Oxon OX10 0PS



Scott Gesner

07818 244787

gesnergardening@yahoo.co.uk

www.gesnergardening.co.uk

*Contact us for a
free quotation*

ALLAWAY AUTO ENGINEERS

Approved M.O.T. Test Station



Now carry out pre-booked M.O.T.'s for Motor Cycles while you wait.
Servicing and repairs for Cars, and Motor Cycles
Tyres supplied and fitted.

Open Mon - Fri 8.30am-5.30pm

Saturday 9am-1pm

Unit D Whiteley Road
Hithercroft Industrial Estate
Wallingford
Tel: 01491 833116

Warmingham

www.warmingham.com

Opening new doors for you



Warmingham & Co - Your local professional family run Estate Agents & Valuers.

Having been established for over 30 years, you can be assured of a professional and thorough approach from our highly qualified and experienced personable staff who, both understand the current market place and yield extensive local knowledge.

Offering our clients the most effective, cohesive and progressive marketing package tailor-made to their own individual requirements, locally, nationally, and internationally, we are here to make your next move both seamless, and the right one for you.

Call us 7 Days A Week for a Free Valuation on 01491 874144

Or visit

www.warmingham.com

Office Opening Hours: Monday - Saturday: 08:30 - 18:30 - Sunday: 10:00 - 16:00

Website Opening Hours: 24 Hours A Day - 7 Days A Week - 365 Days A Year

Sales & Valuations

T 01491 874144

E sales@warmingham.com

4-5 High Street
Goring on Thames
Oxfordshire

RG8 9AT

Residential Lettings

T 01491 875011

E lettings@warmingham.com

DON'T BUY IT - HIRE IT!

• PLANT & TOOL HIRE • TRADE & DIY •

We are the hire specialists and stock all your needs - from hand tools to forklift trucks

Service second to none. Competitive prices.
Delivery and collection service.

Open: Mon.-Fri. 7.30am - 5pm Saturday 7.30am - 12 noon
PARKING A PLEASURE!

DIDCOT PLANT

Didcot Plant Ltd, Basil Hill Road, Didcot

01235 814000

www.didcotplant.co.uk

LET with confidence



- Local Family Business
- Specialising in residential lettings and property management
- Over 26 year's experience
- No set up fees
- Competitive rates
- Trust in our experience

Wallingford 01491 824470 / Didcot 01235 375570

info@homebasepropertymanagement.co.uk

www.homebasemanagement.co.uk



Howbery

BUSINESS PARK - WALLINGFORD

Free to use ATM

At Howbery Park in The Manor House

**Come and Visit our Deli Bar/
Coffee Lounge and try our
NEW real coffee machine**

- Freshly made baguettes
(available 11am - 2pm)
- Small selection of homemade cakes
- Friendly welcoming staff
- Beautiful surroundings
- Conference room hire available
- Free wi-fi
- Ample Parking

**Open Monday - Friday
8.30am - 4.00pm**

Visit us, or call 822495 for more information.

www.howberypark.com



St Mary Magdalene's Church Crowmarsh Gifford

Team Vicar: The Rev'd Kevin Beer
34 Thames Mead
Crowmarsh Gifford. OX10 8EY
Tel: 01491 599873

Email: teamvicar@wallingfordcofe.org.uk
Churchwardens:

Margaret Foster, tel: 836076
Eva Thompson, tel: 201675

Services for August

Sunday 5th	11am	Family Service
Sunday 12th	11am	Parish Communion
Sunday 19th	11am	Parish Communion
Sunday 26th	11am	Family Communion

Morning Prayer - every Friday at 9am
Evening Prayer - every Sunday at 6pm
Full details at www.wallingfordcofe.org.uk/calendar

The Community Café continues in August on Saturday 11th, 10am–noon at the Village Hall

Autumn Fair

Saturday 15th September, 1–4pm at the Village Hall

Following the remarkable success of our Community Café, planning is now well under way for another new community event at the Village Hall in aid of our church.

The Autumn Fair will include all the outside attractions previously held outside during our June Flower Festival, including the popular "Fun Dog Show" with many different categories and prizes. This is being organised for us by friends whose dog won its category at Crufts – register at 1pm on the day. There will be a bouncy castle, tea & cakes, bar, BBQ, raffle (1st prize £100), tombola, plant and book stalls, white elephant, games, and we hope for varied musical entertainment throughout the afternoon.

Please speak to me or my better half, Lesley-Anne (599873), if you would like to help by donating any saleable goods, bottles, raffle prizes, etc.

To book Crowmarsh Gifford Village Hall

call Chris Strange on 07711 904252, or e-mail cvhbookings@gmail.com.

The Vicar's Thames Pilgrimage Paddle

From 13th August

Clergy are encouraged to have an annual retreat to recharge our spiritual batteries. As an active person, instead of retiring to a quiet monastery for contemplation, I prefer to find God in the natural world – therefore, I will be taking a week out to follow the Thames from its source to where the river becomes tidal at Teddington Lock, a total distance of around 150 miles. This will involve running 12+ miles from the source to Cricklade and then paddling my inflatable canoe with stops along the way, sleeping mainly in a tent. The journey is downhill, so the only complication will be that I will be accompanied by my Springer Spaniel, Ralph, who will no doubt be in and out of the canoe as the mood suits him! If you would like to sponsor me (or Ralph!) in aid of the church, please fill in the form at the welcome desk in church, or email me for a form. Updates on my progress will be published on my blog: revkevbeer.blogspot.com

Blessings, Rev Kev

For details of walks with Didcot and Wallingford Ramblers

please see
www.ramblers.org.uk/didcot-wallingford

COULTON

Plumbing & Heating

A local family business, providing a professional and quality service.



Specialists in Oil & Gas



- Boiler Servicing, Maintenance & Replacement
- Landlord Gas Safety Certificates
- Heating System Maintenance & Installation
- Cylinder Repair & Replacement

01491 824486
info@coultonplumbing.co.uk



Find us on Facebook

Checkatrade.com

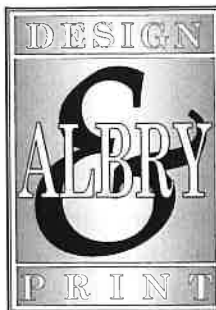
www.coultonplumbing.co.uk



Providing High Quality Decorating
For Your Home & Business

01865 400208

www.shdecor.co.uk



For **ALL** your printing needs:
Business Cards • Letterheads
Comp Slips • Invoices
Leaflets • Magazines/Journals
Corporate & Wedding Stationery
b/w or full colour - no job too small
for **FREE** quotation
(01491) 836282 or
Email: print@albry.co.uk

UNIT 2, ROCKFORT ESTATE,
HITHERCROFT ROAD, WALLINGFORD, OXON. OX10 9DA

NEW COLOUR COPYING FACILITY

Carpet & hard floor care

Vacuum cleaners, bags, filters, spares & repairs
Carpet cleaning machines, shampoos & deodorisers
Rotary floor polishers, pads, wax & polish. Scrubber-driers



CLEAN MACHINE Hire & Sales

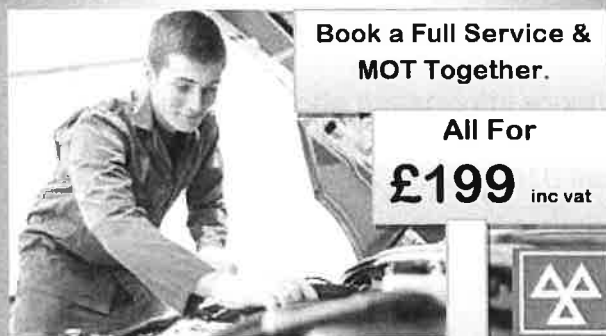
01491 825600 www.machinesthatclean.com

St. Peter's Street Shops, Wallingford, OX10 0BG (behind Champions)

Roy Windebank Auto Engineer

SERVICE & REPAIRS TO ALL MAKES

CAR SALES



Book a Full Service &
MOT Together.

All For
£199 inc vat



Quality Used
Cars For
Sale!!

+ FREE engine
Flush worth £9.99

> Free Local Collection & Delivery

> Free Courtesy car's

Give us a call today!!

Cholsey— 01491 652345

Crowmarsh—01491 824256

District Councillor's Notes

Waste and Recycling

Reminder - Cooking oil collected

We are now collecting cooking oil alongside food waste. Residents just need to empty the oil into a plastic bottle (no bigger than 1 litre), then put it in inside their food waste caddy when they leave it out for collection. We will only collect from plastic bottles and will not accept oil in glass bottles or jars, or any other container.

Wallingford Outdoor Riverside Pool

The heated outdoor swimming pool by Wallingford Bridge is open for the summer season. Riverside Outdoor Pool will be open from 7am - 8pm on Mondays and Wednesdays, from 7am - 6pm on Tuesdays, Thursdays and Fridays and from 9am - 6pm at weekends - until Monday 3rd September. Jubilee Splash Park is already open on site for younger children to enjoy.

A swim costs just £4.50 for adults, £2.90 for junior/seniors or £13.05 for a family swim (two adults and two children). Regular swimmers are also able to take advantage of a season pass for £71 for adults and £35 for juniors and seniors.

For more information about Riverside Park and Pools, please visit the Riverside website or call 01491 835232.

Thames Valley Police

Doorstep crime

Following a recent incident involving a suspicious door-to-door jewellery buyer, our community safety team has sent out the following advice from the police.

Look through the door viewer or window to see who is outside; if you decide to open the door keep the door-chain on. Check the caller's identity, call the organisation's phone number (by independently looking up first) to confirm their identity - remember official visitors will wait while you check.

Do not feel pressured into buying any items or

services at the door.

Do not let them into your house or give them access to any private rooms.

Do not give them information on where valuables are kept.

For more information on how you can protect yourself and others, please visit the Thames Valley Police website.

£1.3m boost for community projects in 2017-18

Last year we provided more than £1.3million in grant funding to community projects in South Oxfordshire. Here's a quick summary of how we allocated the money:

Capital Grants

We awarded £715,408 to 19 projects, including £250,000 for a replacement club house at Thame Sports Club, £170,000 for a replacement roof and other improvements at Wallingford Corn Exchange, and £50,000 to refurbish a playground in Little Milton.

Revenue Grants

17 projects will benefit from £512,000, including £165,620 for the Citizens Advice Bureau, £46,000 for the South Oxfordshire Food and Education Alliance, and more than £24,000 for Be Free Young Carers.

Councillor Community Grants

Councillors have awarded £156,000 to 106 projects, ranging from community events and coaching courses to fencing and flag poles. I am very pleased to say several grants have been awarded to clubs and community organisations within my ward, which is a great reflection of the variety of worthwhile community based interests we have available to use and enjoy.

If you believe you have a project that would benefit from grant aid, please apply to our Grants team.

Cllr Felix Bloomfield
Benson & Crowmarsh Ward, SODC

Photographic Club Exhibition

The Wallingford Photographic Club annual exhibition is on Saturday 1st September in St Mary's Church Hall, Wallingford. Around 100 prints, showcasing the work of club members, will be on display covering a wide range of subjects and photographic styles.

At the event you can get information about this friendly and welcoming club, with members on hand to answer any questions. Tea, coffee and homemade cakes will be available in the hall. So why not visit the exhibition to see some inspiring photography, enquire about how you can join, and enjoy a cuppa while you are there!

Michael Parrott

Club Bridge

Wallingford Bridge Club has grown into one of the most active clubs in the country partly because it has excellent courses teaching newcomers the game and refreshing the knowledge of those who played in their younger days.

We would like to reach out to those who already play at home or with friends and have two sessions that help experienced home players try the club game and familiarise them with the technology used these days.

There are supervised sessions on a Monday morning and a special "pre-scored Chicago" game on Tuesday afternoons.

If you would like to try club play (even if these sessions are unsuitable) please get in contact via the Wallingford Club Website: www.bridgewebs.com/wallingford, and we will see what we can do.

Francis Glassborow

francis_wbc@yahoo.co.uk

01865 717797

To book the Pavilion or Hardcourt area in Crowmarsh...

phone Chris Strange on 07711 904252, or e-mail chrisstrange47@gmail.com

CH Gas Heating And Plumbing Services

Landlords Gas safety Certificates.

Servicing and repair of all domestic gas appliances.

Warm air heating specialist.

Gas boiler replacement.

All aspects of plumbing.

New Bathrooms



190587

Over 35 years experience

Tel 07946 034373



FOUR PAWS CAT RESCUE



Four Paws Cat Rescue is an Oxfordshire-based, entirely voluntary, cat charity, caring for unwanted, ill-treated and stray cats and kittens until they find new homes.

If you are interested in rehoming a cat, please contact us.

More information can be found on our website.

T: 01865 340489/07872450879

E: info@fourpawscatrescue.org.uk

W: www.fourpawscatrescue.org.uk

Registered Charity Number 1138455



Registered with
FUNDRAISING
REGULATOR



Go
Green
Taxis



DOWNLOAD OUR NEW APP!

AND WE'LL GIVE YOU...

10% OFF

It's never been easier to save money with Go Green Taxis. With our NEW easy-to-use app it's as simple as Tap, Track...Go

01491 524 343

www.gogreentaxisltd.co.uk

*Discount is only applied on mobile app or web booking portal.
No discount will be applied through call centre bookings.

Crowmarsh Parish Council News

Chairman: John Griffin, 29 Thames Mead, Crowmarsh Gifford, tel. 838523,
email: johngriffin@phonecoop.coop
Parish Clerk: Sue Rance, 2 Home Farm, Crowmarsh Gifford
Website: <http://www.crowmarshgifford.org.uk/index.php>

Notes of the Parish Council Meeting held at North Stoke Village Hall on Thursday 5th July 2018

Present: Councillors John Griffin (Chair), Nigel Hannigan, Denise Hall, Andrew Johnson, Elizabeth Ryall, David Rowley, Stephen Sherbourne, Stuart Soames, Fleur Stevenson and Francesca Jones; Sue Rance (Clerk), Dr Yvonne Peet (Finance Officer) and County Councillor Mark Gray

One member of the public attended part of the meeting. Apologies were received from Cllr David Topliss and District Councillor Sue Cooper.

Matters arising from the June meeting

We intend to get a quote to cover over the exposed culvert at North Stoke using bricks and steel mesh. County Councillor Gray may find money to finance this.

The diseased ash tree at Jethro Tull Gardens will be taken down on 27th and 30th July. Residents will be informed and asked to keep the area clear on these dates.

The Church will fly the Red Ensign on Merchant Navy Day, 3rd September.

Finance

A schedule of payments made since the last meeting was presented and agreed. £480 was paid to the internal auditor. £2880 was paid to CN Building for external repairs at the pavilion.

A report on receipts and payments for the year to date included the £10,000 grant from the District Council for the neighbourhood plan.

The accounts have been audited and sent to the external auditor, Moore Stephens. Notices have been posted inviting the public to view the accounts.

Three allotment holders have not yet paid the annual rent and the Finance Officer will follow this up.

A request for a grant to 'Victims of Abuse' will be considered in September.

The driver of a Thames Travel X40 double-decker bus took a wrong turn on a Friday in June and managed to drive down Bellamy Way into the recreation ground car park, damaging kerb stones, the gate to the car park, and guttering on the pavilion. Thames Travel have agreed to pay for the damage.

Planning

Decisions by SODC:

P17/S2309/FUL (Full Application): Detached dwelling (as amended or amplified by plans received on 21st March, 2018): 27 Benson Lane, Crowmarsh Gifford, OX10 8ED.
PERMISSION REFUSED.

P18/S1273/FUL: A single storey extension to the existing village hall. Crowmarsh Gifford Village Hall, 6 Benson Lane, Crowmarsh Gifford, OX10 8ED.
PERMISSION GRANTED.

P18/S1411/LB (Listed Building Consent): Internal and external alterations to the existing dwelling and outhouse. The Old Farmhouse, The Street, North Stoke, OX10 6BL.
PERMISSION GRANTED.

P18/S1566/HH (Householder): Internal and external alterations to the existing dwelling and outhouse. The Old Farmhouse, The Street, North Stoke, OX10 6BL.
PERMISSION GRANTED.

Applications: The Parish Council agreed its response to SODC on these applications:

P18/S1858/HH: To build an oak timber frame, brick and glazed front porch to match

character of property. 84 The Street, Crowmarsh Gifford, OX10 8ER.
RECOMMEND APPROVAL.

P18/S1866/FUL: Erection of detached 2-bedroom dwelling with integral double garage. Land adjacent The Old Coach House, The Street, Crowmarsh Gifford, OX10 8EH.
NO STRONG VIEWS.

P18/S1970/HH: Demolition of existing lean-to conservatory and replace with new rear extension. Minor interior alteration to increase the kitchen with breakfast area and create new playroom. New rear extension will form new lounge and hobby room. 44 Thames Mead, Crowmarsh Gifford, OX10 8HA.
RECOMMEND APPROVAL.

P18/S1566/FUL: Change of use to existing redundant barn to one residential unit. The New Barn, Mongewell Park Farm, Wallingford Road, Mongewell, OX10 8BS.
RECOMMEND APPROVAL.

Appeal ref: APP/Q3115/W/17/3186858

Neither James Brokenshire MP (Secretary of State for Housing, Communities and Local Government) nor Jayne Murphy (Leader of SODC) has replied to the Chair of Planning's letter about the handling of the appeal on the Benson Lane site.

Neighbourhood plan

Documents have been posted on the Parish Council website www.crowmarshgifford.org.uk. To find out more about the neighbourhood plan contact Nick Robins: nicks.robins@gmail.com.

Environment & recreation ground committee

Cllr Johnson reported that a deed of dedication will be drawn up for the recreation ground with 'Fields in Trust' at no cost to the Council. This is a legal document making a commitment that the land will remain as open space for recreation. The buildings and hard courts are excluded but the nature area is included. Following the signing of this deed it will be possible to apply for £5,000 funding towards the outdoor gym. It was agreed to approve this dedication, which Cllrs Johnson

and Griffin will sign.

Pavilion access: Quotes are being obtained for adapting the front entrance doors to allow easy wheelchair access.

Update on playground project

Cllr Rowley spoke at the SODC grants panel meeting on 29th June. The Parish Council's bid was ranked 'high' by the officers because the project caters for all ages and has good community support. An award of 50% of the total cost is being recommended and we hope to hear if this has been confirmed in the next few weeks. As well as maintenance costs, the council intends to provide sufficient funds for eventual replacement, although future councils cannot be bound to such expenditure.

Our other major grant application to the WREN community fund is being reviewed currently and a decision will be made in August. Thanks to all those who have worked so hard on these grant funding bids, which have required a lot of painstaking work.

Update on Noticeboards

We have agreed to replace all the noticeboards, but the one at Robert Sparrow Gardens will not need new posts, as they are still sound. Cllr Jones suggested that the noticeboard at the church could be re-sited closer to the bus shelter, but she will discuss this with the Parochial Church Council. Thanks were expressed to Cllr Jones, who will now obtain quotes and place the order.

Traffic and transport

Jon Beale of Oxfordshire Highways met councillors to look at siting movable speed indicators on Benson Lane, The Street and the A4074. Three interchangeable positions will be available for the mobile battery-powered indicators at a cost of £2,500.

The provision of a pedestrian crossing in the Street, Crowmarsh Gifford, continues to be a top priority.

County Councillor's report

- County Councillor Gray reported that

Oxfordshire County Council has entered into a joint service agreement with Cherwell District Council, another step towards a unitary authority for Oxfordshire.

- “Bed blocking” in Oxfordshire hospitals has come down to 78, which is a great improvement, and it is hoped to reduce it further to 40.
- A consultation is to be held to decide where new gravel pits might be sited.
- An improved service has been launched for the public to call the domestic abuse line on 0800 731 0055.
- On behalf of the residents of Cook Lane, a North Stoke resident requested the Parish Council to write to the *Crowmarsh News* asking motorists to respect the 30mph speed limit through the village. This was agreed. However, enforcement is always a matter for the police.
- County Councillor Gray has spoken to residents of Stephens Field, who have requested double yellow lines to restrict parking along the Riverside access road. This has been adopted but the original access road now needs to be closed to traffic for safety reasons. Cllr Gray will pursue this with the County Council.

District Councillor's report

Cllr Sue Cooper's first report had been circulated by email. She will have a local budget of £5,000 to share between the four parishes.

Other business

The Chairman had received an email from a resident regarding use of a footpath adjoining the Springs Golf Club and had sent a copy of the definitive map showing the rights of way in the area.

The notice of a casual vacancy for a Parish Councillor has been posted. It is hoped to find a resident of Mongewell or North Stoke to join the council.

The District Council had notified the Chairman of a press notice that will inform residents of the imminent demolition of the Benson Lane offices.

The exterior of North Stoke Village Hall had

been painted and new curtain track fitted. The recent North Stoke Open Gardens Day raised £2,000 for the hall.

Date of next meeting

The next Parish Council meeting will be on Thursday 2nd August at Crowmarsh Gifford Village Hall starting at 7.30pm. All are welcome.

Wallingford and District Stroke Club

Wallingford and District Stroke Club meets on the fourth Thursday of each month at Crowmarsh Village Hall for activities and companionship, tea and cake. In the summer months we arrange outings, both locally and further afield, using the Wallingford Coach with its accessible platform.

We'd love to welcome more members (fees are very reasonable at £2 per month). If you, or someone you know, would like to join us – or just give us a try – please contact Norman Goodall on 01235 834503 or Nigel Hessey on 01491 651114 and we'll be pleased to talk to you.

To book North Stoke Village Hall

contact Nikki Arnfeld
(839736, narnfeld@yahoo.co.uk) or
Stuart Soames
(836058,
sjwsoames@btinternet.com)

You can hire

the Dance Studio, Sports Hall or the
Astroturf at Wallingford School.

Call Wilson Chong on 829762, or
e-mail
Leisure-centre@wallingfordschool.com

DIRTY CARPETS, UPHOLSTERY, RUGS



Most carpets dry within the hour

Unbeatable results, removes almost all spots & stains call

GRIMEBUSTERS

01865 726983 01235 555533

www.grimebusters.co.uk

THOMAS MERRIFIELD

Surveyors • Auctioneers • Estate Agents

72 High Street, Wallingford, Oxon. OX10 0BX

Tel: 01491 - 833833 Fax: 01491 - 833055

email: wallingford@thomasmerrifield.co.uk

www.thomasmerrifield.co.uk

GORING & STREATLEY CLINIC

trained to fight

PAIN



The Community Centre
Station Road, Goring

For treatment of
Ligaments & Muscles
Rheumatism & Arthritis
Sciatica
Backache
Lumbago
Joint Pains
Sports Injuries
Headaches & Stress

01491 873 874
or out of hours
07775 714 300

Natalia Beddoe BSc(Hons)Ost
Registered Osteopath
Victoria Swan MAO
Registered Osteomyologist

PJWITNEY ELECTRICAL CONTRACTORS LTD

REGISTERED MEMBER
ECA

Installation & Repair
Test & inspection
Free estimates

Over 20 years of quality workmanship

Phone Fax 01491 837939

Mobile 07740981597

Email peter.witney@sky.com

CLIVE THE HANDYMAN

Over 35 years experience in the Building Trade

Painting & Decorating
Patch Plastering
Woodwork, Tiling,
Fascias, Roofing/Gutter Repairs,
Repointing, Boxing-In,
Small Plumbing Jobs,
Flat Pack Assembly,
Blinds & Curtain Rails
General Household Repairs
No Job Too Small
All Work Guaranteed
Fully Insured

Give me a ring on 01491 411321 / 07766 540117



CLEANER, GREENER OVEN CLEANING

Ovens | Hobs | Microwaves | Extractors | BBQs

WE PUT THE SHINE BACK INTO THE INSIDE AND OUTSIDE OF YOUR OVEN!

T. 01491 837420 E. info@proovencleaning.co.uk

www.proovencleaning.co.uk



Wittenham Dog Grooming Studio

Catering for all your dog's grooming requirements by someone who loves dogs and is C&G qualified. Puppies very welcome as an introduction to grooming in a safe, secure environment.

Weekdays, Evening & Saturday appointments available.

Please Contact Gayle Ready on
07814 228868 or

www.wittenhamdoggrooming.studio



Thames & Gents Hairdressing
Est. 1958

21 St. Mary's Street, Wallingford
Oxfordshire OX10 0EW

Telephone : 01491 837124

OPENING HOURS

MONDAY	8.30 am - 6.00 pm
TUESDAY	8.30 am - 6.00 pm
WEDNESDAY	Closed
THURSDAY	8.30 am - 9.00 pm
FRIDAY	8.30 am - 9.00 pm
SATURDAY	8.00 am - 6.00 pm

www.thamessalon.com

WHAT'S ON – AUGUST 2018

Regular events and meetings

Every Friday	09.30-12.00	Wallingford Country Market	St Mary's, W'ford
Every Saturday	10.00-12.00	WAGS Store open	Centre 70
Most Saturdays	10.00-13.00	Local Producers' Market	St Mary's, W'ford
Every Sunday	11.00 onwards	Parish Communion; Family service first Sunday of month	Crowmarsh Church

This month

Wednesday 1st	14.00	U3A: The work of Great Ormond Street Hospital	Crowmarsh Village Hall
Thursday 2nd	19.30	Crowmarsh Parish Council Meeting	Crowmarsh Village Hall
Sunday 5th	13.30	CTC 22-mile road ride	Meet Wallingford Market Place
Saturday 11th	10.00-12.00	Crowmarsh Community Café	Crowmarsh Village Hall
Saturday 11th	10.30-12.30	Sue Ryder Sale	Nettlebed
Sunday 12th	13.00-17.00	Garden Party to celebrate 100 years of the RAF	Castle Gardens
Saturday 18th	11.00-16.00	Castle Day @ Wallingford Museum	Wallingford Museum
Saturday 18th	20.00	Concert: Mary Plaza with Spanish and French chamber music	St Peter's Church, Wallingford
Saturday 25th to Monday 27th	All day	Bank Holiday Spécials	Cholsey and Wallingford Railway
Friday 31st to Sunday 2nd Sept	All days	Bunkfest	Locations throughout Wallingford

September

Thursday 6th	19.30	Crowmarsh Parish Council Meeting	Crowmarsh Village Hall
Saturday 8th	All day	Ride and Stride for Churches	Oxfordshire-wide
Saturday 8th	20.00	Music: Villiers String Quartet	St Peter's Church, Wallingford

For details of walks with Didcot & Wallingford Ramblers, please see www.ramblers.org.uk/didcot-wallingford