



# Crowmarsh News

Issue 473

February 2018

The *Crowmarsh News* is a self-funded publication, and we regret that we are unable to accept unpaid advertising, even from local businesses and societies.

We welcome material for inclusion but do not necessarily endorse the views of contributors. We reserve the right to refuse material or to shorten contributions as may be appropriate. Editorial decisions are final.

## ADVERTISING RATES

The *Crowmarsh News* is currently distributed to over 700 households in Crowmarsh Gifford, North Stoke and Mongewell.

Our rates for a one-eighth page display advertisement (nominal 9cm wide x 7cm tall) are:

1 month – £7.50  
3 months – £21.00  
6 months – £39.00

### Leaflet distribution

For a single sheet loose insert in the *Crowmarsh News* (size up to A4), our current rate is £25.00 for a single month. Advertisers must supply their own inserts (740 copies, please).

Cheques should be made payable to Crowmarsh News Association.

## The Crowmarsh News Team

The *Crowmarsh News* is run by the Crowmarsh News Association, a group of local volunteers.

*Editorial and Layout:* James and Toni Taylor

*Editorial support:* John Griffin, Amanda Maher, Kirsty Dawson

*What's On listings:* Julian Park

*Advertising:* Pat Shields

*Distribution:* Frank Sadler and Team

## Next month's issue

All new advertisements and all copy for the March issue of *Crowmarsh News* must reach us before our **20th February deadline**.

For all items of news, articles or correspondence, please e-mail

[crowmarsh.editor@gmail.com](mailto:crowmarsh.editor@gmail.com)

or deliver to the Editors at 57 The Street.

For all advertising, please contact

[crowmarshadvertisers@gmail.com](mailto:crowmarshadvertisers@gmail.com)

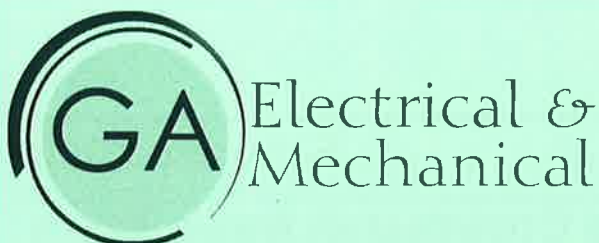
or deliver to The Old School, Benson Lane.

## Is your garden working for you?

Whether you want to transform your garden or just make it more manageable, GreenArt can help. We've designed, built and improved hundreds of gardens for over 20 years. We offer a professional service and take pride in our work.

Call: 01491 280447 / 07901 977290  
email: [info@greenart.uk.com](mailto:info@greenart.uk.com)

[www.greenart.uk.com](http://www.greenart.uk.com)



Quality work • Qualified electricians • Fully guaranteed  
Whatever your electrical challenge we are on hand to help

T 01491 520787  
E [info@gaelectrical.co.uk](mailto:info@gaelectrical.co.uk)  
W [www.gaelectrical.co.uk](http://www.gaelectrical.co.uk)



## HOWARD CHADWICK

*A caring family owned and managed Funeral Service*

- *Dedicated Private Chapel of Rest •*
- *Golden Charter Pre Paid Funeral Plans •*
- *Specialists in Memorial Stones and Designs •*

33 Benson Lane, Crowmarsh,  
Wallingford OX10 8ED  
Tel: 01491 825222



## DANCE FITNESS CLASS Tuesdays Crowmarsh Village Hall

9.45-10.45am (60+)

11-12noon

7.30-8.30pm

**Fun sessions, everyone welcome**

Just come along or contact Andrea for more  
information: 0771 7023 007 or email:  
[turners.the@icloud.com](mailto:turners.the@icloud.com)

**SHOE  
REPAIRS**

**Leather  
Stitching  
Repairs**

**KEY  
CUTTING**



**FEET FIRST**  
*Quality Shoe Repairs*



Contact **GARY**

21 St. Mary's Street Wallingford.  
Telephone (01491) 825224

Watchstraps  
Batteries

Travel Goods  
Luggage



Look good...  
feel good

Forresters Wallingford has  
built its reputation as a centre  
of excellence and showcase  
for cuts and colour.

For more information about offers  
and promotions or to book a FREE  
consultation, contact us today.



01491 837 523 Forresters4Hair.com

You can  
now book  
online

Find us at: 25 High Street, Wallingford. OX10 0BU

## G.R. Galliford

Graham

07762650809

01491 824583

Mini Digger with Operator

Block Paving

Driveways

Patios

Fencing

Drop Kerbs

Groundwork



## CROWMARSH TYRE

BALANCING, TRACKING  
& PUNCTURES. LARGE  
STOCKS OF LEADING  
MAKES

AND  
**EXHAUST CENTRE**

01491 834088

BEADLE ESTATE, HITHERCROFT ROAD,  
WALLINGFORD, OXON. OX10 9GW



BATTERIES,  
COMPREHENSIVE  
STOCK FOR BRITISH,  
JAPANESE AND  
EUROPEAN CARS  
24 MONTHS  
UNLIMITED  
MILEAGE  
GUARANTEE





## Waste Consultation

Raising the bar in recycling: Your chance to talk rubbish and recycling with Oxfordshire's councils

Do you know that each household in Oxfordshire produces one tonne of waste each year? We are amongst the best in the country at recycling and composting for a few years now at about 60% but recycling rates have started to drop in Oxfordshire.

Residents are being given the chance to talk rubbish and recycling and tell Oxfordshire's county, city and district councils how they can help them recycle more and create less waste.

This consultation will inform the review of the joint countywide waste strategy. This sets out shared priorities across Oxfordshire for waste and recycling until 2030, that will be approved by the Oxfordshire Environment Partnership over the summer. Then, each council partner will adopt changes later in the year.

We want to do better at recycling and the new joint countywide waste strategy is critical to this. We know that on average over half of the items put in the general waste bin could have been recycled by placing them in the other bins available.

Through this consultation residents are being asked what would help them to reduce their overall waste consumption and recycle more. This includes expanding the range of materials that can be recycled at the kerbside and tips and advice on left-over food, upcycling clothing or donating or buying second hand goods.

The councils are also seeking views on more radical schemes that have been implemented elsewhere in the country, such as changing bin sizes and collection frequency.

Councillor Yvonne Constance, Cabinet Member for Environment at Oxfordshire County Council said: "We want to help residents to increase the amount they recycle

and have looked around at what other councils are doing. This is a long-term strategy and we will not be making any immediate changes. However, we are interested in which of these the residents of Oxfordshire think may work for them as we seek to minimise the overall amount of residual waste produced in the county."

Do you want to help us recycle and reduce waste? Take part in the online survey at [www.recycleforoxfordshire.org.uk](http://www.recycleforoxfordshire.org.uk). The survey runs for six weeks until 18th February.

## Planning Appeal Hearing

The Planning Appeal by Bloor Homes and Hallam Land Management against the refusal of planning permission on the site to the East of Benson Lane, Crowmarsh Gifford, Wallingford, OX10 8ED will be heard by the Planning Inspectorate at a public inquiry starting at 10.00 on 27 March 2018.

The venue will be the Fountain Conference Centre, Howbery Park, Wallingford, OX10 8BA and this venue will be reserved for 6 days. The Parish Council and CRAG will be there to oppose the appeal.

## Chilterns Conservation Survey

The Chilterns Conservation Board have launched a survey on the Chilterns. They want to hear from local organisations and members of the public about what they value about the Chilterns, what their concerns are and what the priorities should be for the future. Find the survey at: [www.surveymonkey.com/r/Future-OfTheChilterns](http://www.surveymonkey.com/r/Future-OfTheChilterns)

This survey will form part of the review of the Chilterns AONB Management Plan. And there is the chance to win £50 worth of vouchers for completing it!

### John Ham

We are very sad to report the sudden death of John Ham. John ran the Crowmarsh Stores and Post Office for around thirty years before his retirement only a few years ago. Our condolences go to his wife, Jackie, and his family.

**Pictures, logos and display ads for the Crowmarsh News...**  
...are best in .jpg or .pdf format.

# Crowmarsh School

Another month has flown by. We are now starting to think ahead to Easter and all the events and festivities that lead up to it. Our Year 6 journalists have written a short piece below about some of their favourite things this past month.

"On Friday 19th January we had an amazing Christingle Service at our school's church. Rev Kev hosted it and delivered some readings from the bible.

"In collective worship we have been focusing on topics such as determination and bravery. We have read books such as The Dot, Salt in His Shoes and My Fantastic Elastic Brain. In class we have taken inspiration from the book The Dot and have made our own dot art – learning that no matter what our strong points are, we can all #BePhenomenal.

"We have started football tournaments at lunchtime giving pupils chances to have a go at a new sport. It also teaches important life skills such as team spirit and good sportsmanship. The groups were organised by house teams and gave pupils chances to interact and play alongside each other."

(By Emily D, Lola, Emily T and Lauren.)

Finally, we would like to invite our community to our Easter Poetry and Music Evening on Friday 23rd March at 6pm in our school hall. Come along and hear our choir and children perform musical pieces as well as poetry they have memorised or written themselves. It should be a wonderful evening.

Until Next Time.....

**Flora Barton**  
**Headteacher**

## Great British Spring Clean 2nd to 4th March

South Oxfordshire and Vale of White Horse District Council are backing a nationwide campaign to get half a million people out and about cleaning up their local communities in March.

The Great British Spring Clean aims to help bring people together to clear up the litter that blights their local streets and parks.

Litter remains a huge problem across the country, causing harm to the environment and wildlife, with councils in England having to spend over £700 million on street cleaning services every year.

To take part in the campaign and for information on how to set up your clean-up event, visit [www.greatbritishspringclean.org.uk](http://www.greatbritishspringclean.org.uk) or contact the Parish Council (details on page 13).

We will be encouraging and supporting groups and individuals who want to help by offering equipment to borrow free of charge. If you require litter pickers, sacks, gloves and high visibility jackets, please contact the waste team on [waste.team@southandvale.gov.uk](mailto:waste.team@southandvale.gov.uk) or call 01235 422146.

The Parish Council also has equipment and will organise a local litter-pick: look out for posters with times and places.

## Crime prevention advice

Local police have received a report of a male going door to door in one of the villages selling dusters, ironing boards etc. Very sadly, this male persuaded an elderly resident to sign a cheque he wrote for nearly £200 for goods that would ordinarily be worth no more than about £10. We strongly advise that you do not buy from anyone on the doorstep. Please do not fall for a sob story and part with money. Buying from people on the doorstep encourages them to return to our area.

We have had two vehicles stolen in Wallingford recently. The car keys are taken from the house and the cars are stolen with the keys. Please ensure your car keys are not reachable through the letterbox (they often reach through with coat hangers etc). Keep your keys away from any windows and doors to prevent them from being "fished" through letterboxes, or seen from outside to tempt the thief, but make sure you know where they are in case of fire.

If you want advice or to contact the neighbourhood team, you can call the police non-emergency number 101 - or if it is an emergency, dial 999.



# Coulton

## Tree Services

**Coulton Tree Services are local, professional Arborists, covering all aspects of tree work.**

- Professional Tree Care
- Tree removal
- Tree reductions & thinning
- Pruning
- Fruit tree pruning
- Deadwood removal
- Hedgecutting
- NPTC qualified Arborists
- ISA member
- Fully insured

Call Max to arrange a free quotation

01491 282302

07824617377

[www.coultontrees.co.uk](http://www.coultontrees.co.uk)



 Find us on Facebook

**City & Guilds**  
**NPTC**  
Qualified



## Beacon Flooring

*A Family Run Business*

Carpet - Wood - Vinyl - Karndean

Free fitting on carpet orders over £150

16 High Street, Goring on Thames, RG8 9AR

01491 454095 [beaconflooring@aol.co.uk](mailto:beaconflooring@aol.co.uk)

[www.beaconflooring.co.uk](http://www.beaconflooring.co.uk)

## Oxon Foot Care

### Mobile Foot Health Practitioner

*Providing complete foot care in the comfort of your own home including a foot health check and vascular assessment.*

*Treatments include:*

Calluses and Corn Removal

Ingrown/ Long Nails Cut

Verrucae Treatment

Fungal Infections

Diabetic Foot Care

Call Keith Jones MCFHP MAFHP

**t. 07802 784 444**

**e. [info@oxonfootcare.com](mailto:info@oxonfootcare.com)**

[www.oxonfootcare.com](http://www.oxonfootcare.com)

Registered Member of the British Association of Foot Health Professionals



# LAWNCARE

**GARDEN MACHINERY  
SALES, SERVICE & SPARES**

LODGE FARM  
OLD READING ROAD  
CROWMARSH  
WALLINGFORD  
OXON OX10 8BW

*Agents for:*  
*Mountfield ~ Westwood ~ Echo*  
*& many others*  
*Briggs & Stratton service centre*  
**TEL 01491 836060**

## Fireplace Magic

### Woodburners, Fires & Fireplaces

- Installation
- HETAS registered
- Woodburner servicing
- Chimney sweeping

Showroom at: 45 Prospect Street, Caversham RG4 8JB

Telephone: 0118 9463060

[www.fireplacemagic.co.uk](http://www.fireplacemagic.co.uk)



## MEET - DRINK - EAT



**Opening hours  
October - March**

Monday - Sunday 8am - 6pm

**Apply for the waterfront reward card:**  
Collect points on everything you love



**Available for private functions and parties throughout the year**  
**Heated riverside seating area**  
**Food & Drink served all day**

Benson, Wallingford, Oxon, OX10 6SJ  
[info@waterfrontcafe.co.uk](mailto:info@waterfrontcafe.co.uk)

# WATERFRONT CAFÉ

BAR-BISTRO

01491 833732

[www.waterfrontcafe.co.uk](http://www.waterfrontcafe.co.uk)





## Building medieval cathedrals and churches

Mike Chamberlain will talk to The Wallingford Historical and Archaeological Society (TWHAS) about cathedral construction.

His talk, 'Aspire to build – construction of medieval cathedrals and churches', will discuss the rise in cathedral construction during and after the medieval period, and the complexity of these magnificent buildings. It will also look at the human endeavours during the process, and the material requirements from planning to completion.

Mike has lived in the area for many years, and after retirement he joined the Oxfordshire Historical Churches Trust, the Churches Conservation Trust, and the National Churches Trust. He takes an interest in the preservation of the past, and is keen to learn more about our historical buildings.

The talk will be held on Wednesday 14th February, 7.45 for 8pm, at St Mary's Church, Wallingford.

Visitors (£4) are most welcome.  
[www.twhas.org.uk](http://www.twhas.org.uk)

**Katharine Keats-Rohan**

## Wallingford Country Market

Wallingford Country Market is held every Friday 9.30am to 12 noon in our new location, which is St Mary-le-More Church, in the Market Place.

'Marmalade Moments' will be on Friday 2nd March, with delicious new season's Seville orange marmalade on sale, and other flavours, (including tastings).

Also available will be all our usual items, Home-baked, Home-Crafted, Home-grown (particularly pots of colourful bulbs), as well as eggs, preserves and local honey. Coffee and Tea will be served throughout the morning.

We hope you will visit us soon; you may be surprised at what you will find! All enquiries to Market Manager, tel: 681596, or come and speak with her one Friday morning.

## Wallingford U3A

The New Year began with a full house for John Tyler's talk on the Ridgeway. He talked us from the Ivinghoe Beacon to Avebury. It was fascinating.

The Ridgeway is one of the oldest tracks in Europe, 5000 years old, or maybe much more. The Romans did not use it; they constructed the Icknield Way lower down, nearer water, so the Ridgeway has been comparatively undisturbed. We have tended to tarmac the Roman roads. But we did learn that Alfred moved troops along it.

John's talk was wonderfully illustrated and full of memorable detail. Who knew that the Romans introduced the edible snail into England? Who uses them? He walked us through the woodlands that the road passes through, then the change in plants and wild life across the hard chalk land. His pictures of ancient structures were amazing.

We spent some time in Avebury. Many of us, at tea, agreed that we had been inspired to follow the Ridgeway locally, it crosses the River at Goring and goes straight through North Stoke. And we'll go to Avebury when the weather picks up.

Our next speaker will be Ian Keable, who will tell us about James Gillray, the first ever political cartoonist.

This meeting is also the AGM, but do not be dismayed. Our highly respected Chairman conducts the business with impressive speed and then we can all enjoy ourselves. Our monthly meetings are held at 2pm on the first Wednesday of each month at Crowmarsh Village Hall. Visitors are always welcomed for the talk, tea, and the chance to meet and talk to people.

We have another trip organised to Sonning Mill to see Agatha Christie's "The Unexpected Guest" on 30th June. This is a matinee, with lunch followed by the performance. People

can sign up for the trip at the next meeting.

The new season's day outings are also being planned.

Our holiday this year is in Norfolk. We stay at a good hotel, and always have a full and varied itinerary. There is always a good mix of couples and single people with plenty of laughter and companionship. Our various interest groups are settling in for the new season.

Come and join us. For more information please visit our web site: Google: U3A Wallingford. If you would rather speak to someone, then please phone Hermione on 01865 858024; or Jill on 835994.

## Wallingford Parish Church Choir

This Easter Wallingford Parish Church Choir is singing two special works as part of the Easter Worship at St Mary's Church, Wallingford.

On Good Friday, 30th March, at 7pm, they will be singing the Faure Requiem, accompanied by Gaby Clements and directed by Sue Huntingford-Ledger. This beautiful and well known work is a very gentle setting of the Requiem. It is wonderfully ethereal and is a perfect piece with which to consider the events of Good Friday.

On Easter Sunday, 1st April, at the earlier time of 6.30pm, the choir will sing the lesser known work by Philip Ledger, The Risen Christ. This Easter Cantata tells the story of three appearances of the Risen Christ, using words and music. It includes solo items as well as Easter Carols. Again the choir is directed and accompanied by Sue and Gaby. The choir last sang this in 2012, the year after it was published, and they are very much looking forward to singing it once more.

Both of these performances are sung as Acts of Worship, so all are welcome and no tickets are required. There will be a retiring collection after each.

### Short Mat Bowls

takes place at the Pavilion on Tuesdays at 7pm and on Thursdays at 2pm. For more information, please call 837518.



## LIVE-IN CARE



**'Home, why live anywhere else?'**

**A real alternative to a residential or nursing home**

For more information call us on

**01865 861944**

or visit

**[www.opclive-in.co.uk](http://www.opclive-in.co.uk)**

## Wallingford Photographic Club

Wallingford Photographic Club is a friendly and welcoming club for photographers of all levels, and we meet every Thursday evening at 7.30 for 8pm in Crowmarsh Pavilion. We are always very pleased to welcome visitors and new members.

In February, our first two Thursdays will be taken up with our monthly club competition, which has the theme of Motion. On the 1st, colour and monochrome prints will be judged, and the 8th will be devoted to digital projected images.

On the 15th we will have a presentation by Ivor Porter on Wildlife in Britain. This will be followed on the 22nd with A Year in a Suburban Jungle with Michelle Whitmore.

Why not come along on one of these evenings to see what the club has to offer. Full details of our programme along with information on how to find us can be seen on our website <http://www.wallingfordphoto.club>.

## ODD JOB MAN

Offering completion of the following works to the highest standard

\*Fencing \*Decking \* Driveways \*Patios \*Garden Maintenance

LOGS FOR SALE (including kindling wood)

I also collect ALL scrap metal including cars, washing machines, tumble driers and all other scrap metal

As well as these services, I offer removals, house clearances and rubbish removal. I will also happily remove all garden waste including trees and wood. Tree wood is removed free of charge based on the amount and where the customer is based.

For more information or a free quotation please call Nick on 07928775767 or 01189761460

# DW

Dougie White

Bespoke Carpentry & Home Improvements

(+44) 07799891592

dougiwhite73@gmail.com

# PC DRIVE WALLINGFORD

### LEARN TO DRIVE

Fully qualified, DSA approved instructor.

Local, calm, friendly and professional tuition.

Pre-test to post-test courses.

Pass Plus registered.

Dual controls.

Air conditioning.

PETER COSFORD (ADI)

OFFICE: 01491 825091

MOBILE: 07989 352325

www.RefreshPro.co.uk



Exterior Excellence - Specialist Cleaning

\* Patio/Drive Cleaning \* Gutter/Facia Cleaning

\* Reach & Wash Pure Water window cleaning

Pictures speak far more than words, please see our gallery at [www.refreshpro.co.uk](http://www.refreshpro.co.uk)

We are a reliable, local family business based in Crowmarsh providing a professional service to Oxfordshire and the surrounding areas

\*Domestic & Commercial \*Free quotes on all services \*Full public liability insurance

Tel: 01491 833937 Mobile: Kevin 07772416465 Email: [info@refreshpro.co.uk](mailto:info@refreshpro.co.uk)



## ARBOCARE TREE SURGERY LTD

Qualified and Experienced Arborists

Established over 25 years

Contractors to the National Trust

Free Phone: 0808 1555815

Mb: 07778811136

[WWW.AROBOCARE.CO.UK](http://WWW.AROBOCARE.CO.UK)

## Tom Cottrell Landscapes

Est 1974 Family Run Business

Telephone: 01491-836974

### All tree aspects – David Cottrell

Felling, Reducing, Reshaping  
Thinning, Removal, Pollarding  
Shrub & Tree Pruning  
Dead Wood Removal  
Hedge Management  
Stump Grinding

### Garden & Landscaping Services

Turfing, Hedge & Grass Cutting, Planting  
Fencing, Patios  
General Garden Maintenance  
Garden Renovation & Construction  
Woodchip Mulch  
Seasoned Logs & Kindling Wood

Web: [www.tomcottrelllandscapes.com](http://www.tomcottrelllandscapes.com)

Email: [tomcottrelllandscapes@gmail.com](mailto:tomcottrelllandscapes@gmail.com)

Orchard Cottage, High Road, Brightwell-cum-Sotwell, Nr Wallingford, Oxon OX10 0PS



Scott Gesner

07818 244787

[gesnergardening@yahoo.co.uk](mailto:gesnergardening@yahoo.co.uk)

[www.gesnergardening.co.uk](http://www.gesnergardening.co.uk)

Contact us for a free quotation



# ALLAWAY AUTO ENGINEERS

Approved M.O.T. Test Station



*Now carry out pre-booked M.O.T.'s for Motor Cycles while you wait.*  
*Servicing and repairs for Cars, and Motor Cycles*  
*Tyres supplied and fitted.*

Open Mon - Fri 8.30am-5.30pm

Saturday 9am-1pm

**Unit D Whiteley Road**  
**Hithercroft Industrial Estate**  
**Wallingford**  
**Tel: 01491 833116**

# Warmingham

www.warmingham.com

## Opening new doors for you



Warmingham & Co - Your local professional family run Estate Agents & Valuers.

Having been established for over 30 years, you can be assured of a professional and thorough approach from our highly qualified and experienced personable staff who, both understand the current market place and yield extensive local knowledge.

Offering our clients the most effective, cohesive and progressive marketing package tailor-made to their own individual requirements, locally, nationally, and internationally, we are here to make your next move both seamless, and the right one for you.

Call us **7 Days A Week** for a **Free Valuation** on 01491 874144

Or visit

www.warmingham.com

Office Opening Hours: Monday - Saturday: 08:30 - 18:30 - Sunday: 10:00 - 16:00

Website Opening Hours: 24 Hours A Day - 7 Days A Week - 365 Days A Year

**Sales & Valuations**

T 01491 874144

E sales@warmingham.com

4-5 High Street  
Goring on Thames  
Oxfordshire

RG8 9AT

**Residential Lettings**

T 01491 875011

E lettings@warmingham.com

## DON'T BUY IT HIRE IT!

• PLANT & TOOL HIRE • TRADE & DIY •

We are the hire specialists and stock all your needs - from hand tools to forklift trucks

**Service second to none. Competitive prices.**  
**Delivery and collection service.**

Open: Mon.-Fri. 7.30am - 5pm Saturday 7.30am - 12 noon  
**PARKING A PLEASURE!**

### DIDCOT PLANT

Didcot Plant Ltd, Basil Hill Road, Didcot

**01235 814000**

www.didcotplant.co.uk

## LET with confidence



- Local Family Business
- Specialising in residential lettings and property management
- Over 26 year's experience
- No set up fees
- Competitive rates
- Trust in our experience

Wallingford 01491 824470 / Didcot 01235 375570

info@homebasepropertymanagement.co.uk

www.homebasemanagement.co.uk



## Free to use ATM

### At Howbery Park in The Manor House

**Come and Visit our Deli Bar/  
Coffee Lounge and try our  
NEW real coffee machine**

- Freshly made baguettes **(available 11am - 2pm)**
- Small selection of homemade cakes
- Friendly welcoming staff
- Beautiful surroundings
- Conference room hire available
- Free wi-fi
- Ample Parking

**Open Monday - Friday  
8.30am - 4.00pm**

Visit us, or call 822495 for more information.

www.howberypark.com



## St Mary Magdalene's Church Crowmarsh Gifford

Team Vicar: The Rev'd Kevin Beer  
34 Thames Mead  
Crowmarsh Gifford. OX10 8EY  
Tel: 01491 599873

Email: [teamvicar@wallingfordcofe.org.uk](mailto:teamvicar@wallingfordcofe.org.uk)  
Churchwardens:

Margaret Foster, tel: 836076  
Eva Thompson, tel: 201675

### Services for February

Sunday 4th	11am	Family Service
Sunday 11th	11am	Parish Communion
Wednesday 14th	8pm	Ash Wednesday. Team Communion at St Leonard's, Wallingford
Sunday 18th	11am	Parish Communion (we host the other congregations of the Wallingford Team for this service)
Sunday 25th	11am	Family Communion

Morning Prayer - every Friday at 9am  
Evening Prayer - every Sunday at 4pm  
Full details at [www.wallingfordcofe.org.uk/calendar](http://www.wallingfordcofe.org.uk/calendar)



Our first "Crowmarsh Community Café" in January was an overwhelming success! Thank you to all of the 40 or so people who came along, including the

children and especially to those who baked and shared their cakes. The café will be open in the Village Hall from 10am to noon on the second Saturday of each month, except in May, so the dates are: 10th February, 10th March, 14th April, 5th May, 9th June. If you would like to help out by baking a cake or joining the serving rota, then please contact Mary Ruston on 839140 or [rustonjam@tiscali.co.uk](mailto:rustonjam@tiscali.co.uk).

Our primary motivation for opening the Café is out of a concern for those who are lonely or isolated and don't have many opportunities to engage with others in community life. Increasingly, families are distanced as the necessity to move for work or career takes priority. Therefore, it is wonderful that people of all ages come so that we can have interaction between the generations – just like our church family, in fact... we celebrate our Family Service on the first Sunday of each month. Do join us for this too!

February also sees the start of Lent with Ash Wednesday falling this year on Valentine's Day. As part of the Wallingford Team, I will be leading at the special Communion Service which includes "ashing", when the ashes of last year's palm crosses are used to mark our foreheads with a cross. This reminds us of our mortality and our need for God, temporarily making visible the invisible mark that was first made at our baptism, and thus reminding us of the vows made at the beginning of our journey of faith.

Of course, if you or any family members haven't yet been baptised (or "Christened") then please do get in touch and I'll be delighted to welcome others into our church family and indeed, into the universal body of Christ through the ages – [www.wallingfordcofe.org.uk/baptisms/](http://www.wallingfordcofe.org.uk/baptisms/) for more info.

**Rev Kev**

### Congratulations

Congratulations to Bill and Joan Holliday of Thames Mead, who celebrate their Diamond Wedding Anniversary this month.

# COULTON

## Plumbing & Heating

A local family business, providing a professional and quality service.



Specialists in Oil & Gas



- Boiler Servicing, Maintenance & Replacement
- Landlord Gas Safety Certificates
- Heating System Maintenance & Installation
- Cylinder Repair & Replacement

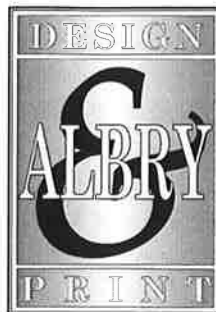
01491 824486

info@coultonplumbing.co.uk



Checkatrade.com  
Where it's all done

www.coultonplumbing.co.uk



For **ALL** your printing needs:  
Business Cards • Letterheads  
Comp Slips • Invoices  
Leaflets • Magazines/Journals  
Corporate & Wedding Stationery  
b/w or full colour - no job too small  
for **FREE** quotation  
(01491) 836282 or  
Email: [print@albry.co.uk](mailto:print@albry.co.uk)

UNIT 2, ROCKFORT ESTATE,  
HITHERCROFT ROAD, WALLINGFORD, OXON. OX10 9DA

## NEW COLOUR COPYING FACILITY

## Carpet & hard floor care

Vacuum cleaners, bags, filters, spares & repairs  
Carpet cleaning machines, shampoos & deodorisers  
Rotary floor polishers, pads, wax & polish. Scrubber-driers



**CLEAN MACHINE** Hire & Sales

01491 825600 [www.machinesthatclean.com](http://www.machinesthatclean.com)

St. Peter's Street Shops, Wallingford, OX10 0BG (behind Champions)



Providing High Quality Decorating  
For Your Home & Business

**01865 400208**

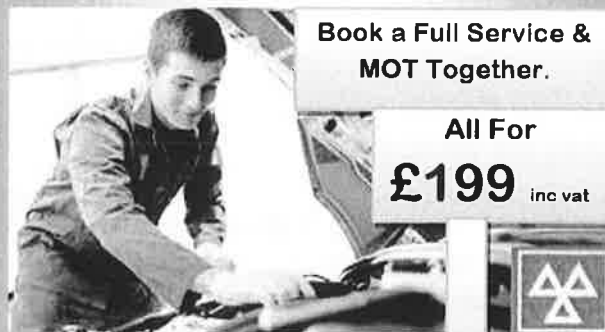
[www.shdecor.co.uk](http://www.shdecor.co.uk)



## Roy Windebank Auto Engineer

SERVICE & REPAIRS TO ALL MAKES

CAR SALES



Book a Full Service &  
MOT Together.

All For  
**£199** inc vat

Quality Used  
Cars For  
Sale!!

+ FREE engine  
Flush worth £9.99

> Free Local Collection & Delivery

> Free Courtesy car's

Give us a call today!!

Cholsey— 01491 652345

Crowmarsh—01491 824256

## Benson Garden Club

The Benson Garden Club is hosting a talk on Growing Vegetables for the Kitchen.

This illustrated talk will be given by Paul Patten, Horticultural Consultant, Writer and Broadcaster.

It will be on Thursday 1st March at 7.45pm at Benson Parish Hall. Visitors very welcome.

## Henley and District Philatelic Society

New Year's resolution to do something different? It is not too late to take up a new and interesting hobby that can cover everything from Astronomy to Railways and more. Come to a Henley Stamp Club meeting and see how collecting has changed over the years!

These are the events planned for February:

*14th Competition and Quiz night.*  
Nine pages and all classes of collecting may be entered

*14th to 17th Spring Stampex*  
At the Design Centre, Islington, London.

*28th Auction viewing*  
Ready for the Open Auction on 14th March. Visitors are welcome.

Hope to see you at Bix Village Hall at 7.45pm. Visitors and new members are welcome. Further details can be obtained by phoning 681739 or from our website: [www.henleyphilatelic.org.uk](http://www.henleyphilatelic.org.uk)

## Can you make a Pact for PACT?

Adoption charity Parents And Children Together is appealing for people to take on a charity challenge in 2018 in support of its work.

The charity, which supports families across the south east and beyond through adoption, award-winning therapeutic support and

community projects, would love to hear from anyone who can make a Pact for PACT and raise funds for its work helping vulnerable children and families. People can choose from a range of ways to support PACT, from signing up to do a sponsored walk, run or bike ride to holding a cake sale, raffle or quiz.

All money raised will help support the charity's community projects and post-adoption therapeutic services for families across the Thames Valley.

PACT has a team of five sponsored runners who will be taking part in the London Marathon on 22nd April.

To find out more, or to download a PACT Guide to Fundraising, see [www.pactcharity.org/support-us](http://www.pactcharity.org/support-us) or contact our fundraising team at [fundraising@pactcharity.org](mailto:fundraising@pactcharity.org) or on 0118 402 1696.

## Wallingford and District Stroke Club

Wallingford and District Stroke Club meets on the fourth Thursday of each month at Crowmarsh Village Hall for activities and companionship, tea and cake. In the summer months we arrange outings, both locally and further afield, using the Wallingford Coach with its accessible platform.

We'd love to welcome more members (fees are very reasonable at £2 per month). If you, or someone you know, would like to join us – or just give us a try – please contact Norman Goodall on 01235 834503 or Nigel Hessey on 01491 651114 and we'll be pleased to talk to you.

**To book Crowmarsh Gifford Village Hall**  
call Chris Strange on 07711 904252, or e-mail [cvhbookings@gmail.com](mailto:cvhbookings@gmail.com).

**Please make use of the  
Parish Council web site  
for news and updates of local affairs**

**[www.crowmarshgifford.org](http://www.crowmarshgifford.org)**



# Crowmarsh Parish Council News

Chairman: John Griffin, 29 Thames Mead, Crowmarsh Gifford, tel. 838523,  
email: johnggriffin@phonecoop.coop  
Parish Clerk: Sue Rance, 2 Home Farm, Crowmarsh Gifford  
Website: <http://www.crowmarshgifford.org.uk/index.php>

## Notes of the Parish Council Meeting held at Crowmarsh Gifford Primary School on Monday 18th December

*Present: Councillors John Griffin (Chair), Andrew Johnson, Stuart Soames, Nigel Hannigan, David Rowley, Francesca Jones, Denise Hall, David Mannering, Fleur Stevenson, Elizabeth Ryall and Stephen Sherbourne; Sue Rance (Clerk) and Yvonne Peet (Finance Officer).*

*Apologies for absence from Councillor David Topliss, District Councillors Bloomfield and Pullen and County Councillor Mark Gray.*

The budget and precept were the main items for this meeting. Matters arising from the meeting on 14th December 2017 will be dealt with at the February meeting.

### Finance

The Finance Officer expected that income would exceed expenditure this year. She presented a draft budget that would keep the precept (the amount we call on from the Council Tax) the same as for the current year. The budget was agreed and the precept will remain at £38,201. This is based on 708 dwellings in the parish for 2018-19, but this number is expected to increase in future.

The following points were noted on the budget:

- Pavilion and Recreation Ground income and expenditure are now shown separately: yoga classes provided a significant income.
- Football income is likely to decrease in the coming year as Cholsey are returning to their own ground.
- Insurance cover had been renewed recently on a two-year deal.
- A grant of £10,000 is expected soon from SODC for work on the Neighbourhood Plan.
- Grass-cutting is shown in the accounts separately for the different areas cut. £9,500

had been spent so far in this financial year: next year's budget is £10,500.

- Amounts had been included for providing daytime access to the toilets and baby changing facilities at the pavilion.
- The telephone line at the pavilion is no longer needed and will be removed. It was noted that the redundant telephone box outside Jewsons has still not yet been removed, although the telephone itself had gone.

The schedule of payments for January was agreed, including reimbursement for tea and biscuits at meetings kindly provided by Cllr Johnson.

Grants and donations were agreed as follows:

- A donation of £100 to the Sue Ryder home at Nettlebed.
- A grant of £100 to the Chilterns Conservation Board.
- A grant of £1000 to North Stoke Village Hall for decoration inside and outside.
- A donation of £250 to Oxfordshire Association for the Blind.

### Other business

- Cllr Johnson has planted daffodil bulbs (donated by Grundon) along the grass verge on the approach to Wallingford Bridge.
- We are grateful to Jewsons for resurfacing the bus layby outside their entrance, which was in a very poor state.
- Cllr Soames reported a deep culvert at North Stoke which is a serious health and safety hazard. It has been reported on "Fix my Street" but no action has yet been taken. He would contact County Councillor Mark Gray.
- London Rock Supplies are proposing to extract gravel and construct a marina on the River Thames near the Wallingford bypass bridge (in Cholsey parish) but had not yet applied for permission. A consultation exhibition was planned at the George Hotel, Wallingford, on 24 January.

## Next meeting

The next full Parish Council meeting will be held on Thursday 1st February 2018 at Crowmarsh Gifford Village Hall starting at 7.30pm. All are welcome.

## Corn Exchange – Open again!

It's been all hands to the pump and now Wallingford's newly refurbished Corn Exchange is open again. The annual Sinodun Players' panto, *Cinderella*, looks to have been a roaring success as tickets were few and far between at the time of this report.

The first cinema show will be an NT Live recording of *Follies*. If you haven't seen this yet, you must. And if you have seen it you'll want to see it again, I'm sure. Relax in the newly refurbished seats and enjoy the wonderful Imelda Staunton in Stephen Sondheim's legendary musical staged for the first time at the National Theatre. Our show is on Thursday 1st February at 7pm. No interval. Tickets £10 and £8 for child concessions.

Then on Thursday 8th February at 7pm, we have another NT Live production, featuring Rory Kinnear as the *Young Marx*. This one is a Certificate 15, and all tickets are £12.50.

Then you can catch the NT Live production of Tennessee Williams' *Cat on a Hot Tin Roof*. The date for this one is Thursday 22nd February, at 7pm. The stage production has an age guidance of 15 plus. All tickets £15.

We do not currently have a published schedule for other cinema showings, so please visit our website ([www.cornexchange.org.uk](http://www.cornexchange.org.uk)) for details as they appear or to book tickets. Call the box office on 825000 in the evenings between 7pm and 8pm, or on Friday and Saturday between 10am and 1pm.

### To book North Stoke Village Hall

contact Nikki Arnfeld (839736, [narnfeld@yahoo.co.uk](mailto:narnfeld@yahoo.co.uk)) or Stuart Soames (836058, [sjwsoames@btinternet.com](mailto:sjwsoames@btinternet.com))

## Sue Ryder – Sale Dates

The next Sales of Donated Goods are on Saturdays 3rd & 24th February and 17th March, from 10.30am to 12.30pm.

Saleable donated goods are welcomed on week days between 9am and 4.30pm. We regret we are unable to accept goods on Sale day or the day before. The Sue Ryder Nettlebed Hospice is at Henley on Thames, RG9 5DF. Please call 01491 641384 ext 246 for further information.

## February Earth Trust Events

The Earth Trust has a great selection of events for children (and accompanying adults) in February. Try these for size:

**Mud Pie Monday! Monday 12th, 10-11.30am**

**Winter Activity Trail, Tuesday 13th, 10am-4pm**

**Wildlife Wednesday, Wednesday 14th, 10am-12pm**

**Build a Bird Feeder, Thursday 15th, 10-11.30am and 1- 2.30pm**

**Discover and Play, Friday 16th, 10am-12pm**

**River of Life Walk, Thursday 22nd, 1pm-3.30pm**

You can book events online (incurs a fee) or by calling 01865 407792 during office hours. For some events, it is essential to book in advance. As always, more information can be found on our website [www.earthtrust.org.uk](http://www.earthtrust.org.uk).

### You can hire

the Dance Studio, Sports Hall or the Astroturf at Wallingford School.  
Call Emma Freeman on 829762, or e-mail [FREEMANE@wallingfordschool.com](mailto:FREEMANE@wallingfordschool.com)

### To book the Pavilion or Hardcourt area in Crowmarsh...

phone Chris Strange on 07711 904252, or e-mail [chrisstrange47@gmail.com](mailto:chrisstrange47@gmail.com)

## DIRTY CARPETS, UPHOLSTERY, RUGS



**Most carpets dry within the hour**

**Unbeatable results, removes almost all spots & stains**

**call  
GRIMEBUSTERS**

**01865 726983 01235 555533**

**www.grimebusters.co.uk**

## THOMAS MERRIFIELD

Surveyors • Auctioneers • Estate Agents

72 High Street, Wallingford, Oxon. OX10 0BX

Tel: 01491 - 833833 Fax: 01491 - 833055

email: wallingford@thomasmerrifield.co.uk

www.thomasmerrifield.co.uk

## CLIVE THE HANDYMAN

Over 35 years experience in the Building Trade

Painting & Decorating  
Patch Plastering  
Woodwork, Tiling,  
Fascias, Roofing/Gutter Repairs,  
Repointing, Boxing-In,  
Small Plumbing Jobs,  
Flat Pack Assembly,  
Blinds & Curtain Rails  
General Household Repairs  
No Job Too Small  
All Work Guaranteed  
Fully Insured

Give me a ring on 01491 411321 / 07766 540117



## CLEANER, GREENER OVEN CLEANING

Ovens | Hobs | Microwaves | Extractors | BBQs

**WE PUT THE SHINE BACK INTO THE  
INSIDE AND OUTSIDE OF YOUR OVEN!**

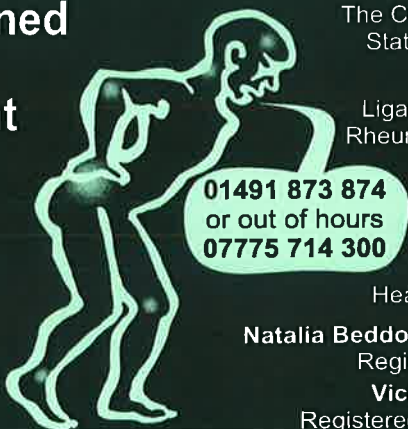
T. 01491 837420 E. info@proovencleaning.co.uk

**www.proovencleaning.co.uk**

## GORING & STREATLEY CLINIC

trained  
to  
fight

**PAIN**



The Community Centre  
Station Road, Goring

For treatment of  
Ligaments & Muscles  
Rheumatism & Arthritis  
Sciatica  
Backache  
Lumbago  
Joint Pains  
Sports Injuries  
Headaches & Stress

**01491 873 874  
or out of hours  
07775 714 300**

Natalia Beddoe BSc(Hons)Ost  
Registered Osteopath  
Victoria Swan MAO  
Registered Osteomyologist



## Wittenham Dog Grooming Studio

Catering for all your dog's grooming requirements  
by someone who loves dogs and is C&G qualified.  
Puppies very welcome as an introduction to  
grooming in a safe, secure environment.

Weekdays, Evening & Saturday appointments  
available.

Please Contact Gayle Ready on  
07814 228868 or

**www.wittenhamdoggrooming.studio**

**PJWITNEY ELECTRICAL  
CONTRACTORS LTD**

REGISTERED MEMBER



Installation & Repair  
Test & inspection  
Free estimates  
Over 20 years of quality workmanship

Phone Fax 01491 837939

Mobile 07740981597

Email peter.witney@sky.com



*Thames & Gents  
Hairdressing*  
Est. 1958

21 St. Mary's Street, Wallingford  
Oxfordshire OX10 0EW

Telephone : 01491 837124

### OPENING HOURS

MONDAY	8.30 am - 6.00 pm
TUESDAY	8.30 am - 6.00 pm
WEDNESDAY	Closed
THURSDAY	8.30 am - 9.00 pm
FRIDAY	8.30 am - 9.00 pm
SATURDAY	8.00 am - 6.00 pm

**www.thamessalon.com**

## WHAT'S ON – FEBRUARY 2018

### Regular events and meetings

Every Thursday	19.45-22.00	Wallingford Photographic Club	Crowmarsh Pavilion
Every Friday	09.30-12.00	Wallingford Country Market	St Mary's, W'ford
Every Saturday	10.00-12.00	WAGS Store open	Centre 70
Most Saturdays	10.00-13.00	Local Producers' Market	St Mary's, W'ford
Every Sunday	11.00 onwards	Parish Communion. Family service first Sunday of month.	St Mary Magdalene's Church, Crowmarsh

### This month

Thursday 1st	19.30	Crowmarsh Parish Council Meeting	Crowmarsh Village Hall
Saturday 3rd	10.30	Sue Ryder Sale	Nettlebed
Sunday 4th	11.00	Church Family Service	St Mary Magdalene's Church, Crowmarsh
Sunday 4th	13.30	CTC 20-mile road ride	Meet Wallingford Market Place
Wednesday 7th	14.00	U3A: Ian Keable talks on James Gillray	Crowmarsh Village Hall
Saturday 10th	10.00- 12.00	Crowmarsh Community Café	Crowmarsh Village Hall
Tuesday 13th	10.00	Pancake Race	Wallingford Market Place
Wednesday 14th	19.30	Henley Philatelic: Competition and quiz night	Bix Village Hall
Wednesday 14th	20.00	TWHAS talk: Mike Chamberlain on Cathedral construction	St Mary-le-More Church, Wallingford
Sunday 18th	13.30	CTC 30-mile road ride	Meet Wallingford Market Place
Saturday 24th	10.30	Sue Ryder Sale	Nettlebed
Wednesday 28th	19.30	Henley Philatelic: Auction viewing	Bix Village Hall

### March

Thursday 1st	19.30	Crowmarsh Parish Council Meeting	Crowmarsh Village Hall
--------------	-------	----------------------------------	------------------------

For details of walks with Didcot & Wallingford Ramblers, please see [www.ramblers.org.uk/didcot-wallingford](http://www.ramblers.org.uk/didcot-wallingford)