



Crowmarsh News

Issue 478

July 2018

The *Crowmarsh News* is a self-funded publication, and we regret that we are unable to accept unpaid advertising, even from local businesses and societies.

We welcome material for inclusion but do not necessarily endorse the views of contributors. We reserve the right to refuse material or to shorten contributions as may be appropriate. Editorial decisions are final.

ADVERTISING RATES

The *Crowmarsh News* is currently distributed to over 700 households in Crowmarsh Gifford, North Stoke and Mongewell.

Our rates for a one-eighth page display advertisement (nominal 9cm wide x 7cm tall) are:

1 month – £7.50
3 months – £21.00
6 months – £39.00

Leaflet distribution

For a single sheet loose insert in the *Crowmarsh News* (size up to A4), our current rate is £25.00 for a single month. Advertisers must supply their own inserts (740 copies, please).

Cheques should be made payable to Crowmarsh News Association.

The Crowmarsh News Team

The *Crowmarsh News* is run by the Crowmarsh News Association, a group of local volunteers.

Editorial and Layout: James and Toni Taylor, Kirsty Dawson, Amanda Maher

Editorial support: John Griffin, Rev Kevin Beer

What's On listings: Julian Park

Advertising: Pat Shields

Distribution: Frank Sadler and Team

Next month's issue

All new advertisements and all copy for the August issue of *Crowmarsh News* must reach us before our **20th July deadline**.

For all items of news, articles or correspondence, please e-mail

crowmarsh.editor@gmail.com

or deliver to the Editors at 57 The Street.

For all advertising, please contact

crowmarshadvertisers@gmail.com

or deliver to The Old School, Benson Lane.

Is your garden working for you?

Whether you want to transform your garden or just make it more manageable, GreenArt can help. We've designed, built and improved hundreds of gardens for over 20 years. We offer a professional service and take pride in our work.

Call: 01491 280447 / 07901 977290
email: info@greenart.uk.com

www.greenart.uk.com



GA Electrical & Mechanical

Quality work • Qualified electricians • Fully guaranteed
Whatever your electrical challenge we are on hand to help

T 01491 520787
E info@gaelectrical.co.uk
W www.gaelectrical.co.uk



HOWARD CHADWICK

A caring family owned and managed Funeral Service

- Dedicated Private Chapel of Rest •
- Golden Charter Pre Paid Funeral Plans •
- Specialists in Memorial Stones and Designs •

33 Benson Lane, Crowmarsh,
Wallingford OX10 8ED
Tel: 01491 825222



DANCE FITNESS CLASS
Tuesdays
Crowmarsh Village Hall
9.45-10.45am (60+)
11-12noon
7.30-8.30pm

Fun sessions, everyone welcome
Just come along or contact Andrea for more
information: 0771 7023 007 or email:
turners.the@icloud.com

**SHOE
REPAIRS**

**Leather
Stitching
Repairs**

**KEY
CUTTING**



FEET FIRST
Quality Shoe Repairs



Contact **GARY**

21 St. Mary's Street Wallingford.
Telephone (01491) 825224

Watchstraps
Batteries

Travel Goods
Luggage



Look good...
feel good

Forrester's Wallingford has
built its reputation as a centre
of excellence and showcase
for cuts and colour.

For more information about offers
and promotions or to book a FREE
consultation, contact us today.



You can
now book
online

01491 837 523 Forrester's4Hair.com

Find us at: 25 High Street, Wallingford. OX10 0BU

G.R. Galliford

Graham

07762650809

01491 824583

Mini Digger with Operator

Block Paving

Driveways

Patios

Fencing

Drop Kerbs

Groundwork



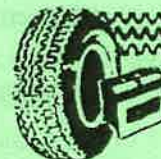
CROWMARSH TYRE

BALANCING, TRACKING
& PUNCTURES. LARGE
STOCKS OF LEADING
MAKES

AND
EXHAUST CENTRE

01491 834088

BEADLE ESTATE, HITHERCROFT ROAD,
WALLINGFORD, OXON. OX10 9GW



BATTERIES,
COMPREHENSIVE
STOCK FOR BRITISH,
JAPANESE AND
EUROPEAN CARS
24 MONTHS
UNLIMITED
MILEAGE
GUARANTEE

Crowmarsh School

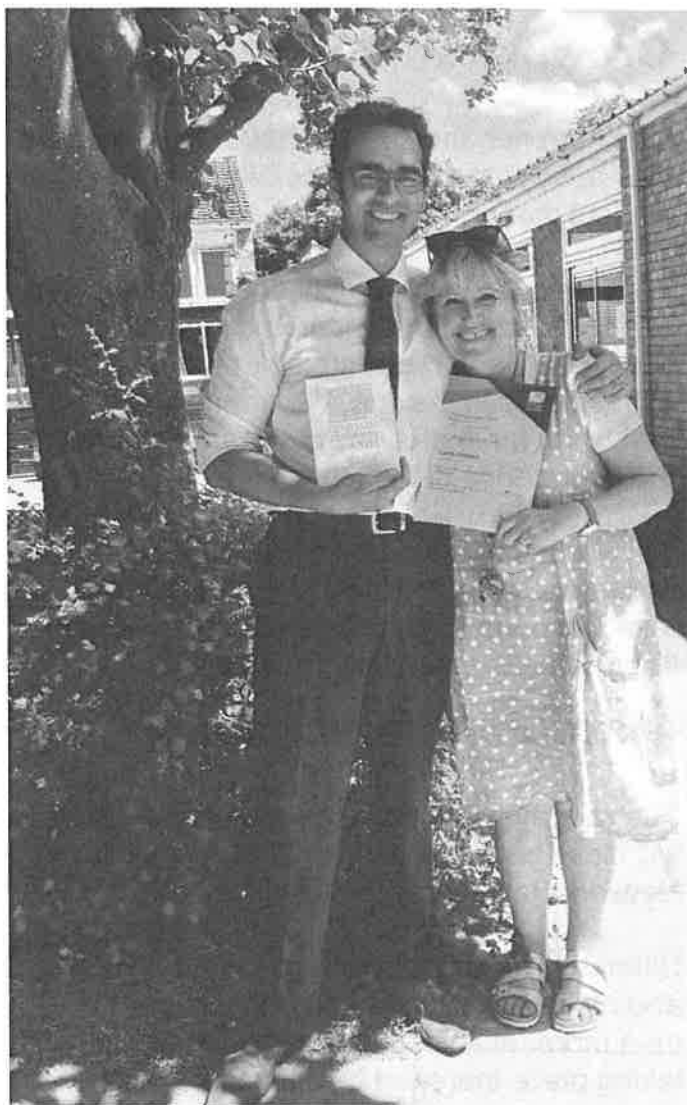
I'm sitting here writing this while many of our families are camped out on our field enjoying family games, barbecuing up hot dogs and burgers, and sitting enjoying the beautiful sunshine. What a fantastic way to finish up what has been an extraordinary year. There has been so much going on that we don't know how summer has crept up on us.

As many of you will already know, Mr Silvester, our year 6 teacher, has been awarded the Silver Pearson Award for Teacher of the Year in a Primary School. He is one of eight, who will be going on to attend the live awards ceremony in London in October. We hope you will all be watching with us! Mrs Garland, one of our teaching assistants, also received a special Pearson Nomination Certificate for being nominated for Teaching Assistant of the Year.

During a celebration assembly, John Howell MP and a representative from Pearson, came to present the awards as well as special certificates for all of our members of staff at our school. Crowmarsh Gifford School truly have a dynamic and inspirational team - I know that I leave school every day knowing that I have the very best job in the world - and a great deal of that is down to the team I work with.

There are a few events still to come in July, such as our annual sports day, year 6 leavers' celebrations, residential trips for both year 5 and year 6 and our final Poetry and Music Evening. We would like to extend a warm welcome to anyone in our community to come and join us during what should be a spectacular evening of music, singing, poetry and inspiration. We will start at 6pm on Thursday the 12th of July. We would love to see you there and hope that you are able to clear your diaries for this date.

As always, when we return in September and you are looking for some volunteer work to do, we would love to have you come to school. We would love help with reading, craft or cooking sessions or helping out with our garden. If you would enjoy coming in every so often to help with any of these things, please do come and see us in the school office. We would love



Crowmarsh School's Mr Silvester and Mrs Garland with their much-deserved awards for excellence.

to have you in school!

We hope that you and your families have a wonderful summer. Enjoy every moment and make as many memories as you can...this is what matters.

Until next time...

Kindest regards,

Flora Barton
Headteacher

Useful telephone numbers

Crime Stoppers 0800 555 111

Police non-emergency number 101

Crowmarsh Pre-School

This summer, the children have been learning how to keep themselves healthy and fit – a subject that is never far from the news.

They have tasted a variety of healthy foods and learnt about the importance of washing their hands and brushing their teeth and how to keep safe in the sun. We are now very busy practising for sports day and learning about the importance of exercise.

We will be breaking up for our long summer holiday at the end of July and would like to take this opportunity to wish everyone a very happy, healthy and safe summer!

Oxford Station Closure

The railway line running through Oxford station will close between 6th and 23rd July while Network Rail upgrades signals and track.

Ultimately this should reduce journey times and make travelling to and from Oxford by train more reliable, but while the works are taking place there will be disruption to train services.

No trains will run out of Oxford Station during this period.

Rail replacement buses will run between Didcot, Oxford and Banbury. Chiltern Railways services between Banbury, Oxford Parkway and London Marylebone are expected to run as normal.

Please visit the Network Rail website for more information. There is a link on page 17.

Local Policing

The next 'Have Your Say' will again be under the Town Hall on 11th July between 11am and 1pm, so please come and see us!

The next 'Cover it Live' online session will be held on Friday 20th July between 5 and 7pm. This session will be focused on Theft from Vehicles and Burglaries. You can log in via the new public link: <http://tvpsouthandvale.coverpage.coveritlive.com/>

Swan Upping at Wallingford

At the start of June this year, we have a family of swans with four healthy cygnets on the Thames at Wallingford. Hopefully they are looking forward to the third week in July, when they will meet the Swan Uppers as they row through Wallingford.

The Royal Swan Uppers, who wear the scarlet uniform of Her Majesty The Queen, travel in traditional rowing skiffs together with Swan Uppers from the Vintners' and Dyers' livery companies. This tradition started in the 1400s, but today the emphasis is on conservation – the birds are no longer eaten!

Swan Upping plays an important role in the conservation of the mute swan and involves The Queen's Swan Warden collecting data, assessing the health of young cygnets and examining them for any injuries.

The Swan Uppers, dressed in uniform, travel in six traditional wooden skiffs, two each for The Crown, the Vintners and the Dyers, with each boat flying the appropriate flags and pennants. Their journey begins at Sunbury and ends at Abingdon, taking five days to cover the 79 miles.

On locating a family of swans, the Uppers give the cry "All-Up!" and the boats converge on the brood and surround it, gradually closing in until the birds can be lifted from the water. The swans are taken ashore for examination and marking.

Originally, the two Companies made their own marks on the birds' beaks; one nick for a Dyers' bird and two for a Vintners'. Today, the two Companies use their own rings. The Crown's swans are left unmarked. Our two adult swans at Wallingford are both unmarked!

This colourful tradition can be observed in the vicinity of Wallingford Bridge around 0930 to 1000 on Friday 20th July. Timings are necessarily approximate.

Further information can be found at: www.royalswan.co.uk

Stu Darby



Coulton

Tree Services

Coulton Tree Services are local, professional Arborists, covering all aspects of tree work.

- Professional Tree Care
- Tree removal
- Tree reductions & thinning
- Pruning
- Fruit tree pruning
- Deadwood removal
- Hedgecutting
- NPTC qualified Arborists
- ISA member
- Fully insured

Call Max to arrange a free quotation
01491 282302
07824617377

www.coultontrees.co.uk



Beacon Flooring

A Family Run Business

Carpet - Wood - Vinyl - Karndean

Free fitting on carpet orders over £150

16 High Street, Goring on Thames, RG8 9AR
01491 454095 beaconflooring@aol.co.uk
www.beaconflooring.co.uk

ROOM SERVICE

Your Local Friendly Cleaning Company

Providing an excellent, professional service to homes and offices in your area. Daily, weekly, or whenever you need help.

Ginny

07976 883165

roomservices@btinternet.com



LAWNCARE

**GARDEN MACHINERY
SALES, SERVICE & SPARES**

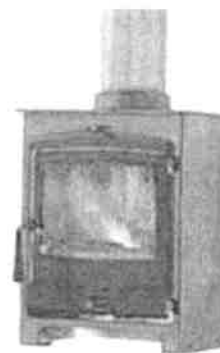
LODGE FARM
OLD READING ROAD
CROWMARSH
WALLINGFORD
OXON OX10 8BW

Agents for:
Mountfield ~ Westwood ~ Echo
& many others
Briggs & Stratton service centre
TEL 01491 836060

Fireplace Magic

**Woodburners,
Fires & Fireplaces**

- Installation
- HETAS registered
- Woodburner servicing
- Chimney sweeping



Showroom at: 45 Prospect Street, Caversham RG4 8JB
Telephone: 0118 9463060

www.fireplacemagic.co.uk

MEET - DRINK - EAT



Opening hours April - September

Monday 8am - 6pm
Tuesday - Sunday 8am - 10pm

Apply for the waterfront reward card:
Collect points on everything you love



Summer evening bistro

Open until the end of September, so make a note to pop by for an evening meal, light bite or drinks!

Food & Drink served all day

Benson, Wallingford, Oxon, OX10 6SJ
info@waterfrontcafe.co.uk

WATERFRONT CAFÉ
BAR-BISTRO

01491 833732

www.waterfrontcafe.co.uk



Crowmarsh Gun Accident

On 1st October 1852, an inquest was held at the Queen's Head Inn, Newnham Murren on the body of William Scudds, aged 16 years, the Coroner being Mr J Cooke.

It appears from the evidence given that the unfortunate lad was bird-scaring for Mr Charles Fuller, a farmer from Newnham Murren. He carried a muzzle loading gun, and on forcing his way through a hedge he pulled the gun through by holding the muzzle. The trigger caught on a branch and the gun went off, at such close range the whole of the gun's

contents was discharged into his body, destroying one lung and pushing his heart to one side.

He did not die immediately, but lingered for a few days. The jury on hearing the evidence returned a verdict of Accidental Death.

William was the son of Elias, a labourer, and Lucy Scudds (nee Blackall), and had an older sister Anna and a brother Edward who was born in 1840. Elias Scudds died in May 1855, aged 46 years.

Oxfordshire volunteers celebrated

Oxfordshire County Council would like to thank our volunteers and all volunteers across Oxfordshire for the difference they make every day! Volunteering in Oxfordshire is thriving with one voluntary organisation for every 289 people in the county and around 4,500 voluntary and community organisations across Oxfordshire – that's significantly higher than the national average.

Oxfordshire County Council has approximately 3000 volunteers who do an amazing job in their communities - delivering books to people who can't get to libraries, teaching children how to code, organising activities for adults with disabilities, and much, much more!

The council also works with the voluntary sector to deliver local services and support thriving communities across Oxfordshire. This includes funding Oxfordshire Volunteers - a dedicated volunteering website for Oxfordshire.

Councillor Mark Gray, Oxfordshire County Council's Cabinet Member for Local Communities, said: "Volunteering is clearly something that goes to the very core of who we are in Oxfordshire and we should definitely be proud of it and sing it from the rooftops.

"The message should go out loud and clear –

thank you to Oxfordshire's volunteers, you do us proud."

Miriam Chappell from the OCVA (Oxfordshire Community and Voluntary Action) added: "Volunteering is of great benefit to our communities, but what often goes unsaid is the benefit it also has for the individual. Volunteering can be a way to make friends, do something different, and add a fresh routine to your life.

"Volunteering offers you the chance to gain new skills – whether you're hoping to improve your confidence, develop an interest, or even change career. The wellbeing benefits of volunteering, from increased self-esteem to improved social connections, cannot be overstated."

There are volunteering opportunities to suit everyone - from volunteering for the National Trust, to whipping up your favourite bakes to sell, to driving people to appointments, to helping teach digital skills at your local library!

Get involved - visit OxonVolunteers.org

**Please make use of the
Parish Council web site
for news and updates of local affairs**

www.crowmarshgifford.org

Science Exchange Wallingford

Heart Failure: making sense of the data
Jennifer Rogers, University of Oxford

Tuesday 10th July, 7:30pm, Wallingford School Library

Much of Dr Rogers' work in the area of statistics in healthcare has been in the field of heart failure, with a particular interest in looking at why people return to hospital. Join us to find out about the challenges of developing innovative statistical approaches and obtaining regulatory approval in this vital area of healthcare.

Not only does Dr Rogers have a busy research programme focused on statistical methodology, with particular regard to the development and use of new statistical methods for the analysis of large-scale clinical trials, but she is also Vice President of the Royal Statistical Society. Additionally, Dr Rogers can be found giving conference presentations and talking all things statistics in schools, theatres and pubs, and sometimes on TV and radio as well!

Science Exchange Wallingford's next meeting is at 7.30pm on Tuesday 10th July in Wallingford School Library, St George's Road, Wallingford. Meetings are very informal; feel free to arrive from 7pm onwards. Speakers talk for about half an hour, then we break for refreshments and return for a lively question and answer session. We are grateful that the support of local company Triaster, Wallingford School and the generosity of our speakers ensures that each event is free to attend. We are also privileged to be a Café Scientifique. (<http://www.cafescientifique.org/>).

Pictures, logos and display ads for the *Crowmarsh News*...

...are best in .jpg or .pdf format.

Table Top Sale, 14th July

On Saturday 14th July, from 10am to 1pm, I will be holding my annual table top sale in my garden, 1 Thames Street, Wallingford, OX10 0BH. There will also be refreshments and cakes.

The purpose of the sale is not only to declutter stallholders' homes, but to raise funds through stall fees and the sale of cakes for the charity Compassion in World Farming (CIWF). Anyone is welcome to have a stall at a cost of £10, but please contact me as soon as possible if you are interested.

The charity was established 50 years ago by a farmer, and they are a peaceful campaigning group to end factory and intensive farming methods, and to work to improve animal welfare. They work with some of the world's biggest food companies. Their charity number is 1095050.

There will be no parking available, except for stall holders unloading, but Thames Street has two public car parks and some on-road parking. Dogs will be very welcome on a lead.

Please put the date in your diary as I know you will not want to miss out on any bargains. See you here.

Theresa Jordan

836240

Email: roytheresalodge@aol.com

North Stoke Open Gardens

North Stoke had another successful open gardens afternoon on Sunday 17th June with cream teas, cakes and plants for sale at the village hall.

Twelve gardens large and small were admired by over 200 visitors and the funds raised will help improve the toilet facilities at the village hall. Many thanks to all who opened their lovely gardens, provided refreshments and worked hard to make this event so enjoyable.

Short Mat Bowls

takes place at the Pavilion on Tuesdays at 7pm and on Thursdays at 2pm. For more information, please call 837518.



Family Archaeology Day

On Saturday 28th July from 11am to 4pm, Wallingford Museum has organised another exciting Family Archaeology Day at the Museum.

Bring along your fossils to show our expert, Steve Head, who will be on hand to identify anything you might have found. Steve will also be able to show you some of his own fossil collection from around the world.

You'll be able learn all about how archaeology is done from the experts and see the results of recent work done in Wallingford Castle. You'll also be able to take part in some 'hands-on' work - pot-washing, identifying pottery, bones, shells, ironwork and much more. Then you can find out how to begin to identify the sort of pottery that helps to date the finds from archaeology, and even try making your own pots for fun!

There'll be a display of things found in past years in the Museum or courtyard, including the rare medieval chess piece excavated from behind the Museum which is now on display there!

You'll be able to explore the delights of the Museum - find the Roman skeleton, the woolly mammoth bones, spearheads, daggers, stones from the lost Priory; handle the cannon ball, search the 'smelly-feely' drawers, and complete a quiz sheet - plenty to interest and occupy the whole family!

Of course, you can also have a good look at this year's special museum exhibitions where there is great interest in its 'Treasures with Tales' exhibition. Residents from Wallingford and the surrounding villages have loaned the museum a wide variety of fascinating objects, each with its own special significance - from exotic to fun to poignant! Visitors are able to follow the 'Treasures Trail' and discover these things for themselves throughout the museum. Each has its own 'tale' displayed and can be enjoyed by the whole family. The treasures are

woven in amongst other exhibitions which include not only the story of Wallingford's Saxon origins, its great Royal castle, and the town's links with Agatha Christie, but also updates on the recent archaeology that is being uncovered by new developments around the town.

So there's plenty of family entertainment for this special archaeology day!

Entry is by Museum ticket at the door - £5 per adult (which gives unlimited entry until 30 November) but accompanied children are FREE.

Stu Darby

www.wallingfordmuseum.org.uk



Archaeological discoveries around Wallingford

Richard Oram (Planning Archaeologist at Oxfordshire County Council) will talk to The Wallingford Historical and Archaeological Society (TWHAS) about the 'Recent archaeological discoveries in Wallingford and its environs'.

Richard has been the Planning Archaeologist at Oxfordshire County Council providing archaeological advice within the planning system to South Oxfordshire District Council and Cherwell District Council for the last 12 years. Prior to this he worked as a field archaeologist for a number of commercial archaeological organisations in the UK and the Republic of Ireland since graduation from Sheffield University with a BA (hons) in Archaeology and Prehistory.

In his role at the County Council, Richard has an interest in all periods of archaeology up to and including the late 20th century, and is particularly interested in transition periods such as the Late Iron Age to Roman and the Roman to Saxon period. He is also interested in transportation and trade links between settlements and how the infrastructure of the prehistoric and Roman landscape may have functioned and what evidence for this may have survived.

This talk will be held on Wednesday 11th July, 7.45 for 8pm, at St Mary's Church, Wallingford. Visitors (£4) are most welcome.

Katharine Keats-Rohan

www.twhas.org.uk

Music at St Peter's

We have two lovely concerts in July. On Saturday 14th, British/Romanian pianist Florian Mitrea gives us chunky works by four of the greatest composers for the piano – Beethoven, Schubert, Rachmaninov and Liszt. Two weeks later on Saturday 28th we have a return visit from the Rautio Trio, a bright and critically acclaimed young group, with works for piano, violin and cello by Schubert, Rachmaninov and Ravel.

You can buy tickets on line – go to www.musicatstpeterswallingford.org.uk, or buy at the door. Tickets bought this way cost £15. You can buy in person in advance from Just Trading, 17 St Mary's Street, Wallingford, or by post – that will cost £13 per ticket. Pick up a brochure for full details, or call Laurence on 01865 343336 who will send you one, or visit our website.

If you have not yet sampled this wonderful chamber series within a stone's throw from Crowmarsh, we have a 'First Timers Free' offer just for you! All our concerts start at 8pm at St Peter's Church, Thames Street, Wallingford – get there in good time for your favourite seats as they are unreserved!

Roger Morgan

The Corn Exchange

Cinema

Full listing online, all regular performances normally start at 7:30pm unless stated otherwise.

Tickets £8 for Adults and £5 for under 15s, unless otherwise stated.

Due to popular demand, we are reshowing the live screening of the Stage Musical "An American in Paris" on Thursday 5th July at

7.30pm and are offering a very reduced price for the Under 18s. This musical has been applauded as "the best we have ever shown" and it has received over 28 five-star reviews in the press. There is incredible choreography, great singing and acting, superb orchestration and fantastic dynamic staging and scenery. Tickets for Adults £10 and for under 18s will be £6, compared to the £12 for the previous showing.

Live

Angels – The Greatest Show. Performing Angels & Stars Stage School present their version of a show inspired by the story of P. T. Barnum.

The talented pupils of Oxfordshire's Performing Angels present their version of a show inspired by the story of P. T. Barnum's creation of the Barnum & Bailey Circus and the lives of its star attractions. Dancing, singing and acting from a wide range of children and adult students.

Performances will be at the Angels Stage School on Saturday 21st July, 2pm and 7pm. Tickets cost £13.50 (adults) or £6.50 (seniors and under 16s).

Coming Soon

Friday 12th and Friday 26th October 8pm, Cliff Richard Live: 60th Anniversary Tour, Live from Manchester's Bridgewater Hall.

Britain's Ultimate Pop Star, Cliff Richard is celebrating 60 years in the music industry and he wants to invite you to the most fabulous big screen party of the year!

Cliff Richard has had 103 album releases, 123 single hits and has spent the equivalent of 20 years in the UK charts. Featuring his greatest hits across six decades, this will be Cliff Richard's most exciting tour yet. His incredible energy and passion on stage will sweep you off your feet and be sure to have you swaying in the aisles.

Tickets for Friday 12th October - £25 (adults) or £20 (seniors and under 18s)
Tickets for Friday 26th October - £18 (adults) or £15 (seniors and under 18s).



LIVE-IN CARE



'Home, why live anywhere else?'

A real alternative to a residential or nursing home

For more information call us on

01865 861944

or visit

www.opclive-in.co.uk

DW

Dougie White

Bespoke Carpentry & Home Improvements

(+44) 07799892592

dougiewhite73@gmail.com

PC DRIVE WALLINGFORD

LEARN TO DRIVE

Fully qualified, DSA approved instructor.

Local, calm, friendly and professional tuition.

Pre-test to post-test courses.

Pass Plus registered.

Dual controls.

Air conditioning.

PETER COSFORD (ADI)

OFFICE: 01491 825091

MOBILE: 07989 352325

www.RefreshPro.co.uk



Exterior Excellence - Specialist Cleaning

* Patio/Drive Cleaning * Gutter/Facia Cleaning

* Reach & Wash Pure Water window cleaning

Pictures speak for more than words, please see our gallery at www.refreshpro.co.uk

We are a reliable, local family business based in Crowmarsh providing a professional service to Oxfordshire and the surrounding areas

* Domestic & Commercial * Free quotes on all services * Full public liability insurance

Tel: 01491 833937 Mobile: Kevin 07772416465 Email: info@refreshpro.co.uk

ARBOCARE

TREE SURGERY LTD

Qualified and Experienced Arborists

Established over 25 years

Contractors to the National Trust

Free Phone: 0808 1555815

Mb: 07778811136

WWW.ARBOCARE.CO.UK

Tom Cottrell Landscapes

Est 1974 Family Run Business

Telephone: 01491-836974

All tree aspects – David Cottrell

Felling, Reducing, Reshaping
Thinning, Removal, Pollarding
Shrub & Tree Pruning
Dead Wood Removal
Hedge Management
Stump Grinding

Garden & Landscaping Services

Turfing, Hedge & Grass Cutting, Planting
Fencing, Patios
General Garden Maintenance
Garden Renovation & Construction
Woodchip Mulch
Seasoned Logs & Kindling Wood

Web: www.tomcottrelllandscapes.com

Email: tomcottrelllandscapes@gmail.com

Orchard Cottage, High Road, Brightwell-cum-Sotwell, Nr Wallingford, Oxon OX10 0PS



Scott Gesner

07818 244787

gesnergardening@yahoo.co.uk

www.gesnergardening.co.uk

*Contact us for a
free quotation*

ALLAWAY AUTO ENGINEERS

Approved M.O.T. Test Station



Now carry out pre-booked M.O.T.'s for Motor Cycles while you wait.
Servicing and repairs for Cars, and Motor Cycles
Tyres supplied and fitted.

Open Mon - Fri 8.30am-5.30pm

Saturday 9am-1pm

Unit D Whiteley Road
Hithercroft Industrial Estate
Wallingford
Tel: 01491 833116

Warmingham

www.warmingham.com

Opening new doors for you



Warmingham & Co - Your local professional family run Estate Agents & Valuers.

Having been established for over 30 years, you can be assured of a professional and thorough approach from our highly qualified and experienced personable staff who, both understand the current market place and yield extensive local knowledge.

Offering our clients the most effective, cohesive and progressive marketing package tailor-made to their own individual requirements, locally, nationally, and internationally, we are here to make your next move both seamless, and the right one for you.

Call us **7 Days A Week** for a **Free Valuation** on **01491 874144**

Or visit

www.warmingham.com

Office Opening Hours: Monday - Saturday: 08:30 - 18:30 - Sunday: 10:00 - 16:00
Website Opening Hours: 24 Hours A Day - 7 Days A Week - 365 Days A Year

Sales & Valuations

T 01491 874144

E sales@warmingham.com

4-5 High Street
Goring on Thames
Oxfordshire

RG8 9AT

Residential Lettings

T 01491 875011

E lettings@warmingham.com

DON'T BUY IT - HIRE IT!

• PLANT & TOOL HIRE • TRADE & DIY •

We are the hire specialists and stock all your needs - from hand tools to forklift trucks

Service second to none. Competitive prices.
Delivery and collection service.

Open: Mon.-Fri. 7.30am - 5pm Saturday 7.30am - 12 noon
PARKING A PLEASURE!

DIDCOT PLANT

Didcot Plant Ltd, Basil Hill Road, Didcot

01235 814000

www.didcotplant.co.uk

LET with confidence



- Local Family Business
- Specialising in residential lettings and property management
- Over 26 year's experience
- No set up fees
- Competitive rates
- Trust in our experience

Wallingford 01491 824470 / Didcot 01235 375570

info@homebasepropertymanagement.co.uk

www.homebasemanagement.co.uk



Howbery

BUSINESS PARK - WALLINGFORD

Free to use ATM

At Howbery Park in The Manor House

**Come and Visit our Deli Bar/
Coffee Lounge and try our
NEW real coffee machine**

- Freshly made baguettes **(available 11am - 2pm)**
- Small selection of homemade cakes
- Friendly welcoming staff
- Beautiful surroundings
- Conference room hire available
- Free wi-fi
- Ample Parking

**Open Monday - Friday
8.30am - 4.00pm**

Visit us, or call 822495 for more information.

www.howberypark.com



St Mary Magdalene's Church Crowmarsh Gifford

Team Vicar: The Rev'd Kevin Beer
34 Thames Mead
Crowmarsh Gifford. OX10 8EY
Tel: 01491 599873

Email: teamvicar@wallingfordcofe.org.uk
Churchwardens:

Margaret Foster, tel: 836076
Eva Thompson, tel: 201675

Services and Events for July

Sunday 1st	11am	Pet Service – a family service with blessing of pets
Sunday 8th	11am	Parish Communion
Saturday 14th	10am-Noon	Crowmarsh Community Café at the Village Hall
Sunday 15th	11am	Parish Communion
Saturday 21st	1pm	Wedding
Sunday 22nd	11am	Patronal Service
Sunday 29th	11am	Parish Communion

Morning Prayer - every Friday at 9am

Evening Prayer – every Sunday at 6pm

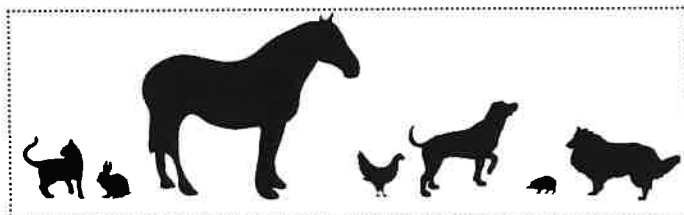
Full details at www.wallingfordcofe.org.uk/calendar

A huge thank you to everyone who supported our "Paths of Peace" Flower Festival last month, whether as a flower arranger, host or visitor. Many people remarked on how moving the displays were as a reminder of the importance of peace after the horrors of the First World War.

It was lovely to end the "Songs of Praise" service by reading aloud the thoughts and prayers attached to the flowers of the School's interactive display and to allow everyone to continue the prayers by taking them home with them. The Festival raised a grand total of £555.

We now look forward to the Autumn Fair on Saturday 15th September in the Village Hall which will feature the fun dog show, bouncy castle, bar & BBQ, tombola and many other stalls and we hope for some musical entertainment ...!

But back to this month... our Family Service on 1st July is our annual "Pet Service" when we welcome families to bring their pets with



them into church: we thank God for all the joy that they bring to us, and ask his blessing upon them and our relationships with them as part of his creation. In practice, this means that the canine species is usually well-represented, so we particularly look forward to meeting more exotic pets – any (brave!) cats, rabbits, guinea pigs, fish, hamsters, gerbils, ferrets, chinchillas, parrots, budgies, tortoises, rats, stick insects, snakes, tarantulas... "all things bright and beautiful", as the hymn goes!

Then towards the end of the month, we celebrate Mary Magdalene, in whose name our church is dedicated, with our Patronal Festival on Sunday 22nd July which we follow with a celebratory lunch.

**Blessings,
Rev Kev**

To book Crowmarsh Gifford Village Hall

call Chris Strange on 07711 904252, or e-mail cvhbookings@gmail.com.

For details of walks with Didcot and Wallingford Ramblers

please see
www.ramblers.org.uk/didcot-wallingford

COULTON

Plumbing & Heating

A local family business, providing a professional and quality service.



Specialists in Oil & Gas



- Boiler Servicing, Maintenance & Replacement
- Landlord Gas Safety Certificates
- Heating System Maintenance & Installation
- Cylinder Repair & Replacement

01491 824486
info@coultonplumbing.co.uk



Cheekatrade.com

www.coultonplumbing.co.uk



For **ALL** your printing needs:
Business Cards • Letterheads
Comp Slips • Invoices
Leaflets • Magazines/Journals
Corporate & Wedding Stationery
b/w or full colour - no job too small
for **FREE** quotation
(01491) 836282 or
Email: print@albry.co.uk

UNIT 2, ROCKFORT ESTATE,
HITHERCROFT ROAD, WALLINGFORD, OXON. OX10 9DA

NEW COLOUR COPYING FACILITY

Carpet & hard floor care

Vacuum cleaners, bags, filters, spares & repairs
Carpet cleaning machines, shampoos & deodorisers
Rotary floor polishers, pads, wax & polish. Scrubber-driers



CLEAN MACHINE Hire & Sales

01491 825600 www.machinesthatclean.com

St. Peter's Street Shops, Wallingford, OX10 0BG (behind Champions)



Providing High Quality Decorating
For Your Home & Business

01865 400208

www.shdecor.co.uk



Roy Windebank Auto Engineer

SERVICE & REPAIRS TO ALL MAKES

CAR SALES



Book a Full Service &
MOT Together.

All For

£199 inc vat



Quality Used
Cars For
Sale!!

+ FREE engine
Flush worth £9.99

> Free Local Collection & Delivery

> Free Courtesy car's

Give us a call today!!

Cholsey— 01491 652345

Crowmarsh—01491 824256

New District Councillor for Benson and Crowmarsh Ward: Sue Cooper

Following the by-election on 7th June I am pleased to introduce myself as the new member of South Oxfordshire District Council for Benson and Crowmarsh ward (and also for Ewelme and Warborough). In case you haven't seen the figures, the results were:

Sue Cooper LibDem 1048 [57.5%; +27.3%]

Domenico Papa Con 685 [35.9%; -10.7%]

William Sorenson Lab 121 [6.6%; -4.0%]

Green Party 0 [0.0%; -12.6%]

Percentage changes from 2015 in case you like the detail!

The Green Party did not put up a candidate but agreed to support me.

Thank you to all those who voted for me. I shall do my best to work for the good of all Crowmarsh residents.

I don't yet know which committees I will be on as we don't have a full council meeting until 19th July. That is when committee places will be allocated. But I have asked to have planning training as soon as possible to bring me up to date and so that I can participate in this contentious area.

I have an SODC email address which you can use to contact me. I have already been approached by someone who is concerned about air quality asking what can be done to reduce the emissions of vehicles waiting to cross Wallingford bridge. Encouraging people to use the bypass or to turn off idling engines while waiting at the traffic lights sound like reasonable suggestions and I'd be pleased to hear of any other good ideas.

Sue Cooper

Sue.Cooper@southoxon.gov.uk

**To book the Pavilion or Hardcourt area in
Crowmarsh...**

phone Chris Strange on 07711 904252, or
e-mail chrisstrange47@gmail.com

Wallingford U3A

Summer time at last, and we are off to Norfolk on 21st June for a five day holiday. Lots of Stately Homes, and when we are cultured out we can potter round Norwich or stay in the hotel and drink coffee. Our holidays are always good fun.

At our meeting in June we were delighted to welcome back Judy Dewey, a historian with an encyclopaedic knowledge of the Wallingford area. She spoke about Agatha Christie's connections with Wallingford.

Born in 1890 and raised in Torquay, Agatha Christie had little formal education, but read widely and began writing stories early. She married Archibald Christie in 1914. After the War and a period travelling with her husband she began to write seriously, creating Poirot in "A Serious Affair at Styles".

She lived in Wallingford for 35 years, at Winterbrook House, shopping locally, and taking an active interest in the Sinodun Players. Fiercely private, she always stated her occupation as "Housewife". She gave only one interview ever, to a senior pupil at Wallingford School.

She had some kind of breakdown, perhaps precipitated by her mother's death in 1922 and the discovery that her husband was having an affair. They divorced in 1928. In 1938 she travelled to the Middle East where she met a young archaeologist, Max Mallowan, whom she married in Edinburgh after a whirlwind romance. She died in Winterbrook House on 12th January 1976.

On 4th July, the speaker at our monthly meeting will be Dr Jim McWhirter who will talk to us about helping rural mission hospitals in Uganda. Dr McWhirter used to practice in Nettlebed, so will be familiar to many people in the area.

Our July Outing, on Tuesday 17th, will be to Sezincote House and Batsford Arboretum, Gloucestershire. For information please ring Hermione on 01865 858024.

We are taking bookings for "Guys and Dolls" at

Sonning Mill in December. These theatre visits, lunch and matinee on a Saturday are, quite rightly, very popular, so those who are interested should let Jim know as soon as possible.

Our 10 Interest Groups meet regularly. The Book Group needs more members, but the Current Affairs Discussion group is flourishing as are the visits to Local Churches of Interest. Our outings are always popular. For more information please visit our website: u3asites.org.uk/Wallingford

Our monthly meetings are held in Crowmarsh Village Hall at 2pm on the first Wednesday of each month. Visitors are always made welcome. Why not drop by? Come to the talk, stay for some tea and conversation. See what you think.

Sue Ryder – Sale Dates

The next Sales of Donated Goods are on Saturdays 21st July and 11th August, from 10.30am to 12.30pm.

Saleable donated goods are welcomed on week days between 9am and 4.30pm. We regret we are unable to accept goods on Sale day or the day before.

The Sue Ryder Nettlebed Hospice is at Henley on Thames, RG9 5DF. Please call 01491 641384 ext 246 for further information.

Letter to the Editors

Flower Festival thanks

We visited the Crowmarsh Church Flower Festival and found it beautiful and serene with its theme of "Paths of Peace".

Well done to all the flower arrangers and helpers.

Christine & Michael Tolman

CH Gas Heating And Plumbing Services

Landlords Gas safety Certificates.

Servicing and repair of all domestic gas appliances.

Warm air heating specialist.

Gas boiler replacement.

All aspects of plumbing.

New Bathrooms



190587

Over 35 years experience

Tel 07946 034373



FOUR PAWS CAT RESCUE



Four Paws Cat Rescue is an Oxfordshire-based, entirely voluntary, cat charity, caring for unwanted, ill-treated and stray cats and kittens until they find new homes.

If you are interested in rehoming a cat, please contact us.

More information can be found on our website.

T: 01865 340489/07872450879

E: info@fourpawscatrescue.org.uk

W: www.fourpawscatrescue.org.uk

Registered Charity Number 1138455



Registered with
FUNDRAISING
REGULATOR

Tennis court hire

at Crowmarsh Gifford recreation ground.

£4 per session or £30 per annum

To book, phone or text Chris on 07711 904252.

Access by keypad on the gate (code changed regularly).

To book North Stoke Village Hall

contact Nikki Arnfeld

(839736, narnfeld@yahoo.co.uk) or

Stuart Soames

(836058,

sjwsoames@btinternet.com)

**PLEASE MAKE A SPECIAL NOTE OF
DEADLINES FOR THE CROWMARSH NEWS
(SEE FRONT COVER) DURING THE
HOLIDAY SEASON!**

Crowmarsh Parish Council News

Chairman: John Griffin, 29 Thames Mead, Crowmarsh Gifford, tel. 838523,
email: johnggriffin@phonecoop.coop
Parish Clerk: Sue Rance, 2 Home Farm, Crowmarsh Gifford
Website: <http://www.crowmarshgifford.org.uk/index.php>

Notes of the Parish Council Meeting held at Crowmarsh Gifford Primary School on Thursday 7th June 2018

Present: Councillors Nigel Hannigan (Chair), Denise Hall, Andrew Johnson, Elizabeth Ryall, David Rowley, Stephen Sherbourne, Stuart Soames, Fleur Stevenson and David Topliss, Sue Rance (Clerk), County Councillor Mark Gray

Apologies were received from Cllrs John Griffin, Francesca Jones and Dr Yvonne Peet (Finance Officer).

One member of the public attended part of the meeting.

Matters arising from the May meeting

County Councillor Gray offered a grant of £1000 to have the broken culvert at North Stoke repaired and Cllr Soames will obtain estimates for the work required.

Cllr Hannigan, Cllr and Mr Ryall and the Clerk attended the RAF Benson Annual Reception on 24th May.

The District Council's waste team had cleaned the pavements along some of Benson Lane as part of their Deep Clean programme, but no work had been done in Old Reading Road or Meadow Lane, despite a specific request from the parish council.

Cllr Sherbourne was thanked for purchasing a replacement flower tub at the junction of Benson Lane with The Street and planting it with geraniums.

Cllr Sherbourne has obtained two quotes for removal of the diseased ash tree at Jethro Tull Gardens and a third is awaited. It was agreed to accept the lowest quote.

Finance

A schedule of payments made since the last meeting was presented and agreed.

The annual governance statement for the 2017-18 annual return was reviewed, approved and signed by the Chairman and Clerk.

Planning

Decision by SODC:

P18/S0406/LDP (Lawful Development Permission): Loft conversion including rear dormer and front roof windows. 97 The Street, Crowmarsh Gifford, OX10 8EF.
PERMISSION GRANTED.

Applications:

The Parish Council agreed its response to SODC on three applications:

P18/S1195/FUL (Full Application): Change of use from self-contained residential accommodation (ancillary to Brook Lodge) to Class C3 (single dwelling). Brook Lodge, The Street, North Stoke (in the parish of Crowmarsh), OX10 6BL.
RECOMMEND APPROVAL.

P18/S1420/RM (Reserved Matters): Following the outline approval for demolition of existing buildings and creation of a new headquarters for CABI and FULL permission for 91 dwelling houses (granted at appeal), these are the detailed plans for the new headquarters building. CABI, Nosworthy Way, Mongewell, OX10 8DE.

NO STRONG VIEWS.

P18/S1566/HH (Householder): Internal and external alterations to the dwelling and out-house at The Old Farmhouse, The Street,

North Stoke OX10 6BL.
RECOMMEND APPROVAL.

Application withdrawn

P18/S0596/HH: Amendment No. 1. Proposed extension, alterations and new dropped kerb as amended by plan 1 200, to remove garden fencing around parking area received on 27th April. 2 Park View, Crowmarsh Gifford, OX10 8BJ.

This application has been withdrawn by the applicants and no further action will be taken.

Appeal ref: APP/Q3115/W/17/3186858

The Chair of Planning informed the Council that the Planning Inspector had ALLOWED the appeal for 150 houses on land East of Benson Lane. He has written to James Brokenshire MP, Secretary of State for Housing, Communities and Local Government, asking his department to review the conduct of the SODC planning department's handling of this application.

The Chair of Planning outlined the events that had led up to the inquiry and the subsequent decision. The Council voted unanimously that the Chair of Planning should write to the Leader of the SODC to ask for the resignation of both the Head of Planning and the Head of Legal and Democratic Services, whose decisions had resulted in the SODC being held liable for costs up to £225,000.

Neighbourhood Plan

Councillor Hannigan and Dr Robins met SODC's Rona Knott on 6th June to discuss the Pre-submission Plan document and the Strategic Environmental Assessment for the Crowmarsh Parish Neighbourhood Plan Project. The steering group will have to engage an independent scrutineer before a launch evening can be organised.

The neighbourhood plan document has been posted on the Parish Council website www.crowmarshgifford.org.uk. Any items for the website should be emailed to Cllr Stevenson. To find out more about the neighbourhood plan, contact Nick Robins: nicks.robins@gmail.com.

Environment & recreation ground committee

The committee met on 21st May. Following the resignation of Mr David Mannering, there is a vacancy for a new member on the committee.

Rod D'Ayala will carry out a survey of the nature area and assess the number of species and compare the results with the previous survey. It is hoped to obtain an information board for the nature area.

An electrical safety check has been carried out at the pavilion and quotes obtained for the necessary work.

Update on playground project

A grant application has been submitted to WREN, requesting £80,000. A response from SODC on the grant we applied for is expected by 30th June. Cllr Johnson has applied to the Activation Fund for £5,000. A small donation has been included from Crowmarsh Parish Council.

177 letters of support were received from children and 50 from adults. Agrivert has offered £500 and a local resident has offered £150 if the project goes ahead. The Community Café has offered a donation. Mr David Beasley has offered to donate the proceeds of his exhibition in October at Crowmarsh Village Hall.

Traffic and transport

Cllr Ryall, who attended the Parish Transport Reps meeting recently, reported that school transport in South Oxfordshire is being used for projects to assist the community.

Oxford Station is to be closed for a period in July for track and signal work. Buses will replace trains. Details are at <https://www.net-workrail.co.uk/running-the-railway/our-routes/western/great-western-mainline/oxford/>.

Review of strategic priorities

A list of strategic priorities for 2018-19 was

circulated:

1. Playground at recreation ground – this project is well under way and has planning permission – grants are being applied for.
2. Pedestrian crossing on A4074 Portway – this is part of the development behind Newnham Manor.
3. Pedestrian crossing on The Street.
4. Traffic calming on the B4009 at North Stoke.
5. Scout / community premises – possibly part of redevelopment of SODC site.

County Councillor's report

- Cllr Gray has been following up the speed checks to be carried out in Benson Lane and The Street. Jon Beale of Oxfordshire County Council will visit on 19th June at 2pm to discuss the siting and type of radar speed device to be used.
- Community Infrastructure Levy funding may in future be made available for a pedestrian crossing in The Street.
- Cherwell District Council has joined with the County Council to offer joint services. A unitary authority for Oxfordshire may be considered again.
- It is hoped to get funding to improve roads as part of the planned increase in housing.
- The County Council now has a scything service to cut back undergrowth. Applications for this type of work may be made via Councillor Gray.

Correspondence

- Wallingford Bridge will be closed on Sunday 8th July for the Festival of Cycling. A soapbox race will be held on the same day on the bridge and the riverside park.
- OCC Highways has issued a traffic order for road closure and temporary traffic lights at Carmel Terrace, Mongewell, while they repair a pipe connecting the lakes for five days from 18th June [although this is now expected to be done in early September].
- Organisations are asked to fly the Red Ensign on Merchant Navy Day in early September. The Clerk will order a flag. The Church has also been asked.

Representation on outside bodies

Cllr Ryall will be our new representative on the River Users Group RUG3, but David Mannering will continue to attend this group. Cllr Sherbourne will be the representative at the Grundons liaison meetings.

Cllr Johnson reported that the Emery Owen Charity Trustees met on 23rd May. The charity's financial status is good. Some residents had reported that trees on the boundary of the trust's allotment land were shading their properties, so some pruning will be carried out.

The Clerk will follow up registration of North Stoke Village Hall with the Land Registry.

Date of next meeting

The next Parish Council meeting will be on Thursday 5th July 2018 at North Stoke Village Hall starting at 7.30pm. All are welcome.

Wallingford and District Stroke Club

Wallingford and District Stroke Club meets on the fourth Thursday of each month at Crowmarsh Village Hall for activities and companionship, tea and cake. In the summer months we arrange outings, both locally and further afield, using the Wallingford Coach with its accessible platform.

We'd love to welcome more members (fees are very reasonable at £2 per month). If you, or someone you know, would like to join us – or just give us a try – please contact Norman Goodall on 01235 834503 or Nigel Hessey on 01491 651114 and we'll be pleased to talk to you.

You can hire

the Dance Studio, Sports Hall or the Astroturf at Wallingford School.

Call Wilson Chong on 829762, or
e-mail
Leisure-centre@wallingfordschool.com

DIRTY CARPETS, UPHOLSTERY, RUGS



Most carpets dry within the hour

Unbeatable results, removes almost all spots & stains call

GRIMEBUSTERS

01865 726983 01235 555533

www.grimebusters.co.uk

THOMAS MERRIFIELD

Surveyors • Auctioneers • Estate Agents

72 High Street, Wallingford, Oxon. OX10 0BX

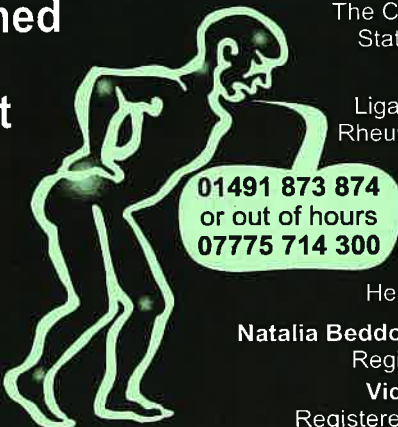
Tel: 01491 - 833833 Fax: 01491 - 833055

email: wallingford@thomasmerrifield.co.uk

www.thomasmerrifield.co.uk

GORING & STREATLEY CLINIC

trained to fight **PAIN**



The Community Centre
Station Road, Goring

For treatment of
Ligaments & Muscles
Rheumatism & Arthritis
Sciatica
Backache
Lumbago
Joint Pains
Sports Injuries
Headaches & Stress

01491 873 874
or out of hours
07775 714 300

Natalia Beddoe BSc(Hons)Ost
Registered Osteopath
Victoria Swan MAO
Registered Osteomyologist

PJWITNEY ELECTRICAL CONTRACTORS LTD

REGISTERED MEMBER



Installation & Repair
Test & inspection
Free estimates

Over 20 years of quality workmanship

Phone Fax 01491 837939

Mobile 07740981597

Email peter.witney@sky.com

CLIVE THE HANDYMAN

Over 35 years experience in the Building Trade

Painting & Decorating
Patch Plastering
Woodwork, Tiling,
Fascias, Roofing/Gutter Repairs,
Repointing, Boxing-In,
Small Plumbing Jobs,
Flat Pack Assembly,
Blinds & Curtain Rails
General Household Repairs
No Job Too Small
All Work Guaranteed
Fully Insured

Give me a ring on 01491 411321 / 07766 540117



CLEANER, GREENER OVEN CLEANING

Ovens | Hobs | Microwaves | Extractors | BBQs

WE PUT THE SHINE BACK INTO THE INSIDE AND OUTSIDE OF YOUR OVEN!

T. 01491 837420 E. info@proovencleaning.co.uk

www.proovencleaning.co.uk

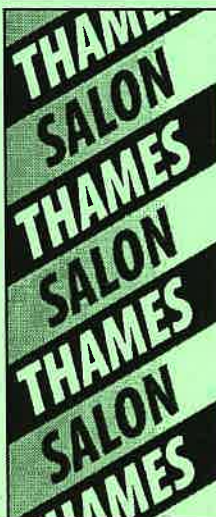


Wittenham Dog Grooming Studio

Catering for all your dog's grooming requirements by someone who loves dogs and is C&G qualified. Puppies very welcome as an introduction to grooming in a safe, secure environment.

Weekdays, Evening & Saturday appointments available.

Please Contact Gayle Ready on
07814 228868 or
www.wittenhamdoggrooming.studio



Gents Hairdressing
Est. 1958

21 St. Mary's Street, Wallingford
Oxfordshire OX10 0EW
Telephone : 01491 837124

OPENING HOURS

MONDAY	8.30 am - 6.00 pm
TUESDAY	8.30 am - 6.00 pm
WEDNESDAY	Closed
THURSDAY	8.30 am - 9.00 pm
FRIDAY	8.30 am - 9.00 pm
SATURDAY	8.00 am - 6.00 pm

www.thamessalon.com

WHAT'S ON – JULY 2018

Regular events and meetings

Every Friday	09.30-12.00	Wallingford Country Market	St Mary's, W'ford
Every Saturday	10.00-12.00	WAGS Store open	Centre 70
Most Saturdays	10.00-13.00	Local Producers' Market	St Mary's, W'ford
Every Sunday	11.00 onwards	Parish Communion; Family service first Sunday of month	Crowmarsh Church

This month

Sunday 1st	13.30	CTC 22-mile road ride	Meet Wallingford Market Place
Sunday 1st	All day	Country Fayre and Cream Tea Specials	Cholsey and Wallingford Railway
Thursday 5th	19.30	Crowmarsh Parish Council Meeting	North Stoke Village Hall
Friday 6th to Sunday 8th	All day	Wallingford Festival of Cycling	Various locations in and about Wallingford
Wednesday 11th	19.30	Henley Philatelic Summer Social	Bix Village Hall
Wednesday 11th	19.45	TWHAS: Recent archaeological discoveries in Wallingford area	St Mary-le-More Church, Wallingford Village Hall
Saturday 14th	10.00-12.00	Crowmarsh Community Café	St Peter's Church, Wallingford
Saturday 14th	20.00 onwards	Music: Florian Mitrea (piano)	
Saturday 14th & Sunday 15th	All day	Teddy Bears and Fancy Dress weekend	Cholsey and Wallingford Railway
Sunday 15th	13.30	CTC 30-mile road ride	Meet Wallingford Market Place
Sunday 15th	15.00-17.00	Cholsey Silver Band Concert	Castle Gardens, Wallingford
Friday 20th	09.30-10.00 approx	Swan Upping	Nr Wallingford Bridge
Saturday 21st	10.30	Sue Ryder Sale	Nettlebed
Saturday 21st	Evening	Fish and Chip Special Supper	Cholsey and Wallingford Railway
Saturday 28th	11.00-16.00	Family Archaeology Day	Wallingford Museum
Saturday 28th	20.00	Music: Rautio Piano Trio	St Peter's Church, Wallingford
Sunday 29th	10.30	CTC 53-mile road ride	Meet Wallingford Market Place

August

Thursday 2nd	19.30	Parish Council Meeting	Crowmarsh Village Hall
--------------	-------	------------------------	------------------------