

# Crowmarsh News

Issue 453

June 2016

The *Crowmarsh News* is a self-funded publication, and we regret that we are unable to accept unpaid advertising, even from local businesses and societies.

We welcome material for inclusion but do not necessarily endorse the views of contributors. We reserve the right to refuse material or to shorten contributions as may be appropriate. Editorial decisions are final.

## ADVERTISING RATES

The *Crowmarsh News* is currently distributed to over 700 households in Crowmarsh Gifford, North Stoke and Mongewell.

Our rates for a one-eighth page display advertisement (nominal 9cm wide x 7cm tall) are:

- 1 month – £7.50
- 3 months – £21.00
- 6 months – £39.00

### Leaflet distribution

For a single sheet loose insert in the *Crowmarsh News* (size up to A4), our current rate is £25.00 for a single month. Advertisers must supply their own inserts (740 copies, please).

Cheques should be made payable to Crowmarsh News Association.

## The Crowmarsh News Team

The *Crowmarsh News* is run by the Crowmarsh News Association, a group of local volunteers.

*Editorial and Layout:* James and Toni Taylor

*Editorial support:* John Griffin

*What's On listings:* Julian Park

*Advertising:* Pat Shields

*Distribution:* Frank Sadler and Team

## Next month's issue

All new advertisements and all copy for the July issue of *Crowmarsh News* must reach us before our 20th June deadline.

For all items of news, articles or correspondence, please e-mail

[crowmarsh.editor@gmail.com](mailto:crowmarsh.editor@gmail.com)

or deliver to the Editor at 57 The Street.

For all advertising, please contact

[crowmarshadvertisers@gmail.com](mailto:crowmarshadvertisers@gmail.com)

or deliver to The Old School, Benson Lane.

## Is your garden working for you?

Whether you want to transform your garden or just make it more manageable, GreenArt can help. We've designed, built and improved hundreds of gardens for over 20 years. We offer a professional service and take pride in our work.

Call: 01491 280447 / 07901 977290  
email: [info@greenart.uk.com](mailto:info@greenart.uk.com)

[www.greenart.uk.com](http://www.greenart.uk.com)



**SHOE REPAIRS**

**Leather Stitching Repairs**

**KEY CUTTING**



**FEET FIRST**  
Quality Shoe Repairs



Contact **GARY**

21 St. Mary's Street Wallingford.  
Telephone (01491) 825224

Watchstraps  
Batteries

Travel Goods  
Luggage



**Electrical & Mechanical**

Quality work • Qualified electricians • Fully guaranteed  
Whatever your electrical challenge we are on hand to help

T 01491 520787

E [info@gaelectrical.co.uk](mailto:info@gaelectrical.co.uk)

W [www.gaelectrical.co.uk](http://www.gaelectrical.co.uk)



**GO DIAMOND**  
School of Motoring

[info@godiamond.co.uk](mailto:info@godiamond.co.uk)  
[www.godiamond.co.uk](http://www.godiamond.co.uk)

**Graeme Rolfe (ADI)**  
Tel: 07710 693397

**Ben Robins (ADI)**  
Tel: 07533 819133

### LEARN TO DRIVE

Fully Qualified, DSA approved driving instructors.  
Calm, friendly and professional tuition.

Lessons to suit you – from one hour introductory/assessment lessons to intensive courses.  
Pass Plus registered • Dual controls • Air conditioning

Based in CROWMARSH GIFFORD, but covering the surrounding areas, including Wallingford, Benson, Cholsey, Watlington, Henley, Didcot, Abingdon, Oxford and Reading.

## HOWARD CHADWICK

*A caring family owned and managed Funeral Service*

- *Dedicated Private Chapel of Rest •*
- *Golden Charter Pre Paid Funeral Plans •*
- *Specialists in Memorial Stones and Designs •*

33 Benson Lane, Crowmarsh,  
Wallingford OX10 8ED  
Tel: 01491 825222



## G.R. Galliford

Graham

07762650809

01491 824583



Mini Digger with Operator

Block Paving

Driveways

Patios

Fencing

Drop Kerbs

Groundwork

## Patricia Newman Practice

CHARTERED BUILDING SURVEYORS

2D & 3D colour plans  
of your project for  
Planning, Building  
Regulations & Project  
Management

Call for a no obligation fee  
quote

Party Wall Surveyors  
Planning Appeals  
Surveys



9 St. Mary's Street, Wallingford 01491 833373

### CROWMARSH TYRE

BALANCING, TRACKING  
& PUNCTURES. LARGE  
STOCKS OF LEADING  
MAKES

AND  
EXHAUST CENTRE

01491 834088

BEADLE ESTATE, HITHERCROFT ROAD,  
WALLINGFORD, OXON. OX10 9GW



BATTERIES,  
COMPREHENSIVE  
STOCK FOR BRITISH,  
JAPANESE AND  
EUROPEAN CARS  
24 MONTHS  
UNLIMITED  
MILEAGE  
GUARANTEE

## South Oxfordshire Local Plan

SODC is preparing a revised Local Plan and there will be public consultation including an exhibition in Crowmarsh Gifford in July. Look out for details of the time and place and come and give your views on the location, amount and type of future housing and other development in the village and nearby. More details will be in the July *Crowmarsh News*.

## Church Summer Fete and Flower Festival

'Celebration' is the theme this year for the annual Summer Fete and Flower Festival at St Mary Magdalene Church, which will form part of the village celebration of the Queen's 90th birthday.

Come and view the 30 or so imaginative and creative displays by village groups and individuals; win prizes in the tombola and raffle, enjoy tea & cakes or beer & BBQ, buy home-grown produce and plants, and join us for an afternoon of live music. Enter your dog in the fun dog show (Saturday), make a crown and enter the 'Classiest Crown' competition (Sunday) and have your photo taken on the 'throne' for a chance of winning the 'Most Regal' competition (all weekend). There will also be games for children of all ages, everyone welcome.

Saturday 11th June:  
Flowers viewing 10am - 6pm  
Fete 12pm - 7pm

Sunday 12th June:  
All Age Worship service at 11am  
Flowers viewing and fete 12.30 - 5pm  
Songs of Praise at 5pm.

Cost of entry to the Fete is £2 per adult, £1 for children or £5.00 for families. For more information, contact Sarah Nesbitt: 07770 930756 or [sjn62@icloud.com](mailto:sjn62@icloud.com)

**Pictures, logos and display ads for the Crowmarsh News...**

...are best in .jpg or .pdf format.

## Sustainable Wallingford news

This is advance notice of the next Swapshop on Saturday 9th July, 9.45-11am at Wallingford Regal Centre, plus an electrical repair café. If you're having a summer sort-out, you can bring your unwanted items for re-use and help yourself to amazing free items at our next Swapshop. All welcome, and you don't have to bring something to take things away.

We will welcome Bicester Green to this Swapshop, who will try to repair any small electrical items you bring. There's no guarantee of fixing it but they will do their best!

Working electrical items can still be swapped as usual, as long as they pass the electrical safety test.

Also in early July (look out for the date and details in the next *Crowmarsh News*) will be a public meeting on 'The Energy Revolution. What is it? How will we make it happen?' with Dr Barbara Hammond MBE from the Oxfordshire Low Carbon Hub – plus displays and information on energy saving and energy generation.

More information is available from [www.sustainablewallingford.org](http://www.sustainablewallingford.org).

## Wallingford Country Market

Wallingford Country Market is now open even longer between 8.30am and 12 noon, every Friday in the Regal Centre. Our annual Outside Market will be held on Saturday 11th June in the Market Square replacing, that week, our usual Friday market.

Plants aplenty during June for bedding, baskets and borders as well as herbaceous and perennials. Friday 24th June is 'Fruity Friday', (baking with seasonal berries, and fresh ones on sale too).

We Bake, Craft, Grow – do come and visit us soon.

To find out more about stalls at the Wallingford Country Market, please contact the Market Manager (01865 890649).



## Crowmarsh Pre-school

A huge thank you for support from the community for yet another successful annual Village Quiz. A great night was had by all and the children will benefit greatly from the additional resources we will be able to buy and the summer farm trip we can treat them to.

In Pre-school, our Rising 5s are now half way through their programme to aid their transition to school, and all seem to be enjoying these sessions and their new reading books.

We have been taking part in the 'Grow a Sunflower Competition' in aid of Cystic Fibrosis Trust. The children have all planted sunflower seeds which they are now carefully tending and watering – they are intrigued to see how the seedlings are growing with all the rain and sunshine!

We plan to plant them in the garden this month and are looking forward to seeing how tall they grow. The sunflowers will be measured at the end of term and there will be a small prize for the child who has grown the tallest sunflower.

Parents and friends have already been kindly giving donations to the Cystic Fibrosis Trust which does a fantastic job supporting families. If anyone else would like to make a donation, please send it to Pre-school, clearly marked Cystic Fibrosis Trust – thank you in advance.

This month we are preparing for the Crowmarsh Flower Festival – the children have been telling us about birthdays and Christmas, when thinking about Celebrations, so look out for our contribution in the Lady Chapel!

The children will be thinking about their Daddies, or other special people in their lives, and preparing a card and small gift for them.

Our Open Morning for Term 6 is on Tuesday 14th June from 9.30 until 10.30am – do please come along and see a normal morning at Pre-school, meet the team and see our session.

Crowmarsh Pre-school is looking to increase the pool of supply cover staff. A role that fits school hours and days with competitive rates

of pay and a uniform provided. Ideally we would like someone with childcare qualifications to level 2 or experience of working with children. If you are interested or would like to know more, please speak to Dilys Beaumont at Pre-school on 07951 599623.

Crowmarsh Pre-school has a strong emphasis on learning through play. We are open to all children between the ages of 2 and 5 years and provide the perfect (and FUN) preparation for children getting ready to start school.

We offer two sessions a day during term time. The morning session runs from 8.45 or 9am to 12pm, and the afternoon session from 12 noon to 3pm. Lunch club is from 12 to 1pm and may be added on to the morning session.

To find out more information about the pre-school, have a look at our website ([www.crowmarshpre-school.org.uk/](http://www.crowmarshpre-school.org.uk/)), call our Manager, Dilys Beaumont, for a chat on 07951 599 623, or e-mail Vikki at [admissions@crowmarshpre-school.org.uk](mailto:admissions@crowmarshpre-school.org.uk)

## Oxfordshire's reading challenge

Are you ready for a marvellous, splendiferous and mischievous reading challenge at your local library this summer?

From 16th July to 17th September children across Oxfordshire can celebrate 100 years of the world's greatest storyteller Roald Dahl with The Big Friendly Read, Summer Reading Challenge 2016.

Children will be encouraged to read at least six library books of their choice over the summer holidays. There will be six stupendous Quentin Blake illustrated cards to collect – some are even smelly! Complete the challenge and they'll get their own medal and certificate.

Join up at your library. It's fun! It's free! It's local!

Look out for fantastic new books and fantabulous activities at the library throughout the summer holidays. There's a website ([www.bigfriendlyread.org.uk](http://www.bigfriendlyread.org.uk)) and an App to add to the fun too!

(Pssst... there is also a reading challenge for adults, A Midsummer Night's Read.)

Wallingford Library will be holding special children's activities during the summer holiday as well as a presentation event in September when successful participants can receive their medals and certificates.

To find out more follow us on twitter @wallingfordlib, check out our webpage at [www.oxfordshire.gov.uk/cms/content/wallingford-library](http://www.oxfordshire.gov.uk/cms/content/wallingford-library), call us on 837395 or come in to the library and say hello!

## Henley Philatelic Society

June sees the society celebrating its 50th Anniversary, a milestone in the history of this active club, and we will look forward to many more years of interesting collecting. It is also when meetings finish for the summer break, resuming on 14th September, when new and present members will be welcomed for an interesting year of meetings on stamps and other collectable postal items.

Wednesday 8th June – Members of Southampton PS visit us to show some of their collections

Wednesday 22nd June – President's evening celebrating our 50th Anniversary

Meetings will re-commence on Wednesday 14th September with 'Latest Acquisitions' (up to nine pages from members), at Bix Village Hall at 7.45pm. Visitors and new members are welcome. Further details can be obtained by phoning 681739 or on our website: [www.henleyphilatelic.org.uk](http://www.henleyphilatelic.org.uk)



## Beacon Flooring

*A Family Run Business*

Carpet - Wood - Vinyl - Karndean

Free fitting on carpet orders over £150

16 High Street, Goring on Thames, RG8 9AR  
01491 454095 [beaconflooring@aol.co.uk](mailto:beaconflooring@aol.co.uk)  
[www.beaconflooring.co.uk](http://www.beaconflooring.co.uk)

### Oxon Foot Care

## Mobile Foot Health Practitioner



*Providing complete foot care in the comfort of your own home in South Oxfordshire and surrounding areas.*

*Treatments include:*

Calluses and Corn Removal  
Ingrown/ Long Nails Cut  
Verrucae Treatment  
Athletes Foot  
Diabetic Foot Care

For appointments contact Keith on  
**t. 07802 784 444**  
**e. [info@oxonfootcare.com](mailto:info@oxonfootcare.com)**

[www.oxonfootcare.com](http://www.oxonfootcare.com)

Registered Member of the British Association of Foot Health Professionals

## E AND J MOTORS

MOT Centre

DOES YOUR CAR NEED  
AN MOT?

What about Wallingford's newest  
and most modern mot centre?

**01491 839388**

E&J Motors  
(Behind Esso Garage)  
Ayres Yard, Station Road, Wallingford.

## MEET - DRINK - EAT



**Opening hours**  
**April - September**

Monday 8am - 6pm  
Tuesday - Sunday 8am - 10pm

**Apply for the waterfront reward card:**  
Collect points on everything you love



**Summer evening bistro**

Open until the end of September, so make a note to pop by for an evening meal, light bite or drinks!

**Food & Drink served all day**

Benson, Wallingford, Oxon, OX10 6SJ  
[info@waterfrontcafe.co.uk](mailto:info@waterfrontcafe.co.uk)

## WATERFRONT CAFÉ

BAR-BISTRO

01491 833732  
[www.waterfrontcafe.co.uk](http://www.waterfrontcafe.co.uk)



# Past Times

from David Beasley

Do you recognise anyone?



History isn't only about what happened hundreds of years ago. History is also about what has happened in living memory but may now be in danger of being forgotten.

These two pictures show classes of Crowmarsh schoolchildren from the 1980s – only three decades or so ago. Do you recognise anybody in the pictures? If you do, please get in touch with the editors to identify these children, who will probably all be in their 30s by now.



## Make Tracks for Wallingford's Model Railway Show

Wallingford will host its second annual model railway exhibition on Sunday 19th June. The event is being held at Wallingford School, St George's Road.

More than 12 model railway layouts, along with a number of trade stands, will be on show in a variety of scales from tiny Z gauge to garden sized G scale. The exhibition is being well supported by clubs and modellers from around Oxfordshire, Berkshire, Buckinghamshire and Hampshire and many of the layouts are new to the exhibition circuit.

Of particular interest is Clara-Zetkin-Stadt, a layout behind the iron curtain of East Germany. You will see a Great Western branch line in Much Muckle very similar to the Cholsey to Wallingford branch line and Novion 1940 a French town scene during the Second World War.

It is down the road from Wallingford station, which is running Fathers' Day Steam Specials on the day between Wallingford and Cholsey. So why not add a trip on the train to your day? Free parking onsite at the school.

The exhibition is open from 10am to 4.30pm. Admission is £5 for adults, £2 for children or £12 for families.

## Calling All Old Moles

Inviting those who left in, or before, 2011 to a BBQ on 3rd September starting at 12pm at the school. Please bring your partner and family or get a group of OM friends together.

For more information, please email: [oldmoles@moulsford.com](mailto:oldmoles@moulsford.com)

## Short Mat Bowls

takes place at the Pavilion on Tuesdays at 7pm and on Thursdays at 2pm. For more information, please call 837518.



## There's never been a better time for your child to join Cranford House

- **'Outstanding'** in Early Years, ISI Inspection, November 2014
- **Excellent Nursery** offering fantastic outside space, Forest School & Swimming lessons - limited places available
- **Co-educational Junior School** (boys and girls 3-11 years)
- **New Sixth Form** adding to our all-girls senior school

At Cranford House, we specialise in academic excellence in a non-selective environment, outstanding pastoral care and superb extra-curricular opportunities for all.



### CRANFORD HOUSE

Excellence in Independent Education

Boys & girls 3-11, girls 11-16 years

[www.cranfordhouse.net](http://www.cranfordhouse.net)

01491 651218

## LAWNCARE

GARDEN MACHINERY  
SALES, SERVICE & SPARES

LODGE FARM  
OLD READING ROAD  
CROWMARSH  
WALLINGFORD  
OXON OX10 8BW

Agents for:  
Mountfield ~ Westwood ~ Echo  
& many others  
Briggs & Stratton service centre  
TEL 01491 836060



### Wittenham Dog Grooming Studio

Catering for all your dog's grooming requirements by someone who loves dogs and is C&G qualified. Puppies very welcome as an introduction to grooming in a safe, secure environment.

Weekdays, Evening & Saturday appointments available.

Please Contact Gayle Ready on  
07814 228868 or  
[www.wittenhamdoggrooming.studio](http://www.wittenhamdoggrooming.studio)



## Wallingford Walks

There has been an excellent response from volunteers from Wallingford and surrounding villages to the recent appeal to lead regular walks of local interest in Wallingford. Training has been ongoing by Judy Dewey, from Wallingford Museum, and it is intended to organise both regular and ad-hoc walks from June onwards.

Every Saturday at 11am there will be a regular Town Walk starting from the Town Hall in the Market Place. The walk will last between 90 minutes and two hours, and will cover a wide variety of interest areas around the town. More specialist walks can be arranged for alternative dates by enquiry at the Town Information Office, or directly with Philip Burton (e-mail [pburton6@talktalk.net](mailto:pburton6@talktalk.net)).

These additional guided walks could be of general interest, or focus on specific locations such as Wallingford Castle or specialist interests such as Midsomer Murders or Agatha Christie. Philip Burton has kindly offered to co-ordinate this new initiative, and it is hoped that it will appeal to local residents and visitors alike. If you would like to assist in this venture please contact Philip ([pburton6@talktalk.net](mailto:pburton6@talktalk.net))

There will be a charge of £5 per person as a donation to Wallingford Museum.

## Sue Ryder – Sale Dates

The date for the next Sales of Donated Goods are Saturdays 4th & 25th June. The sales will run from 10.30am to 12.30pm.

Saleable donated goods are welcomed on week days between 9am and 4.30pm, but we are unable to accept goods on Sale Day or the day before. Volunteers are always needed to select and allocate donated goods and to assist with Sales. The Sue Ryder Nettlebed Hospice is at Henley on Thames, RG9 5DF.

For further details of these sales, please call 01491 641384 ext 246.



## Benson: Anglo-Saxon Estate to Airfield

Drawing on his recent work for the Victoria County History, Simon Townley's talk to the Wallingford Historical and Archaeological Society (TWHAS) will review the evidence for Benson as an Anglo-Saxon royal estate centre and its impact on medieval settlement and estate formation, before touching on a few more recent developments including coaching and the changes of the 19th and 20th centuries.

This talk will be held on Wednesday 8th June, 7.45 for 8pm, at St Mary's Church, Wallingford. Please note that TWHAS talks are now being held on the second Wednesday of each month at St. Mary's Church, Wallingford. Visitors (£4) are most welcome. [www.twhas.org.uk](http://www.twhas.org.uk)

## Five Minutes of Fun: Capability Brown

The Capability Brown Festival 2016 is celebrating the life, work and legacy of 18th century English landscape architect Lancelot 'Capability' Brown, whose 300th anniversary falls this year. The Capability Brown Festival have commissioned a fun and friendly film to introduce new audiences, young and old alike, to the Royal Gardener himself.

The five-minute animation, titled 'They call me Capability Brown', provides a light hearted approach to 18th century landscape architecture, containing Brown's biography, a taste of some of the 250 landscapes that he designed and influenced across England and Wales, and answers questions such as 'What is a Ha-Ha?' and 'How many football pitches fit into the grounds of Blenheim Palace?'.

The film is available to view on YouTube. For further details of the Capability Brown Festival 2016 visit [www.capabilitybrown.org](http://www.capabilitybrown.org) – and see the interactive map: [www.capabilitybrown.org/map](http://www.capabilitybrown.org/map)



# Warmingham

www.warmingham.com

## Opening new doors for you



Warmingham & Co - Your local professional family run Estate Agents & Valuers.

Having been established for over 30 years, you can be assured of a professional and thorough approach from our highly qualified and experienced personable staff who, both understand the current market place and yield extensive local knowledge.

Offering our clients the most effective, cohesive and progressive marketing package tailor-made to their own individual requirements, locally, nationally, and internationally, we are here to make your next move both seamless, and the right one for you.

Call us **7 Days A Week** for a **Free Valuation** on **01491 874144**

Or visit

[www.warmingham.com](http://www.warmingham.com)

Office Opening Hours: Monday – Saturday: 08:30 – 18:30 – Sunday: 10:00 – 16:00

Website Opening Hours: 24 Hours A Day – 7 Days A Week – 365 Days A Year

**Sales & Valuations**

T 01491 874144

E [sales@warmingham.com](mailto:sales@warmingham.com)

4-5 High Street  
Goring on Thames

Oxfordshire

RG6 9AT

**Residential Lettings**

T 01491 875011

E [lettings@warmingham.com](mailto:lettings@warmingham.com)

# Tom Cottrell Landscapes

Est 1974 Family Run Business

Telephone: 01491-836974

All tree aspects – David Cottrell

Felling, Reducing, Reshaping  
Thinning, Removal, Pollarding  
Shrub & Tree Pruning  
Dead Wood Removal  
Hedge Management  
Stump Grinding

Garden & Landscaping Services

Turfing, Hedge & Grass Cutting, Planting  
Fencing, Patios  
General Garden Maintenance  
Garden Renovation & Construction  
Woodchip Mulch  
Seasoned Logs & Kindling Wood

Web: [www.tomcottrelllandscapes.com](http://www.tomcottrelllandscapes.com)

Email: [tomcottrelllandscapes@gmail.com](mailto:tomcottrelllandscapes@gmail.com)

Orchard Cottage, High Road, Brightwell-cum-Sotwell, Nr Wallingford, Oxon OX10 0PS

[www.RefreshPro.co.uk](http://www.RefreshPro.co.uk)



Exterior Excellence - Specialist Cleaning

\* Patio/Drive Cleaning \* Gutter/Facia Cleaning

\* Reach & Wash Pure Water window cleaning

Pictures speaks far more than words, please see our gallery at [www.refreshpro.co.uk](http://www.refreshpro.co.uk)

We are a reliable, local family business based in Crowmarsh providing a professional service to Oxfordshire and the surrounding areas

\*Domestic & Commercial \*Free quotes on all services \*Full public liability insurance

Tel: 01491 833937 Mobile: Kevin 07772416465 Email: [info@refreshpro.co.uk](mailto:info@refreshpro.co.uk)



## DON'T BUY IT HIRE IT!

• PLANT & TOOL HIRE • TRADE & DIY •

We are the hire specialists and stock all your needs - from hand tools to forklift trucks

Service second to none. Competitive prices.

Delivery and collection service.

Open: Mon.-Fri. 7.30am - 5pm Saturday 7.30am - 12 noon  
PARKING A PLEASURE!

### DIDCOT PLANT

Didcot Plant Ltd, Basil Hill Road, Didcot

**01235 814000**

[www.didcotplant.co.uk](http://www.didcotplant.co.uk)

# PC DRIVE WALLINGFORD

## LEARN TO DRIVE

Fully qualified, DSA approved instructor.

Local, calm, friendly and professional tuition.

Pre-test to post-test courses.

Pass Plus registered.

Dual controls.

Air conditioning.

PETER COSFORD (ADI)

OFFICE: 01491 825091

MOBILE: 07989 352325



[performanze.co.uk](http://performanze.co.uk)

More info

Call Rosie: 07745 099472

Email: [performanze@live.co.uk](mailto:performanze@live.co.uk)

## Ballet Tap Modern Street Jazz Drama

**RR**  
FORRESTERS

Look good...  
feel good

Forresters Wallingford has built its reputation as a centre of excellence and showcase for cuts and colour.

For more information about offers and promotions or to book a FREE consultation, contact us today.

01491 837 523 [Forresters4Hair.com](http://Forresters4Hair.com)

Find us at: 25 High Street, Wallingford. OX10 0BU



You can  
now book  
online



## Live Music Festival in Crowmarsh

Local Bands performing on two Stages

Bar, BBQ and Bouncy Castle

Games for kids and Stalls

Sunday 3rd July 1pm—7pm

Crowmarsh Village Hall

Tickets £5 under 14s go FREE

Under 14s must be accompanied by an adult

Ticket information from:

[www.sunfest.one](http://www.sunfest.one) / 01491 202498

Raising support for

Wallingford Young People for Kenya.



## SunFest Music Festival

SunFest is a mini music festival taking place on a long, sunny Sunday afternoon on the 3rd of July at the village hall in Crowmarsh. Gates open at 1pm and the live music doesn't stop 'till 7pm.

The festival will have a chilled vibe with a range of musical styles, confirmed so far are Hattie Briggs, Carthorse, Band of Hope and The Lazy Sundays. Go to [www.sunfest.one](http://www.sunfest.one) for the latest news and band info.

There will be a bar, BBQ and the Hippy Café serving tea and cakes. As well as stalls, face painting, and games for the kids

The festival is being organised by Wallingford Young People for Kenya (WYPK). WYPK are a group of year 10 students from Wallingford School, who are raising money to take part in the volunteer work programme run by the Nasio Trust.

The Nasio Trust supports orphaned children in Kenya, see their website [www.thenasiotrust.org](http://www.thenasiotrust.org) for more information.

The group of 14 students; four from Crowmarsh, will travel to Kenya in October for one week to help build houses, work in day centres and experience a day in the life of the children. Funds raised will target the most vulnerable and needy.

So, if you enjoy live music on a sunny, Sunday afternoon, why not come along to 'Sun Fest'. Tickets cost £5 for adults, under 14s go free and must be accompanied by an adult. Visit the website or call Issy on 01491 202498 for more details. Tickets can also be bought from Music Box @ The Keep.



## Corn Exchange

**The 29th Wallingford Corn Exchange Drama Festival, 13th to 17th June, 7.30pm**

Amateur drama groups from all over the area and beyond compete in an adjudicated competition for a variety of awards. In addition to an entertaining evening of diverse drama from both youth and adult drama groups, it's a great opportunity to learn about all aspects of stagecraft from the adjudicator's comments. This year's adjudicator is Colin Dolley. Tickets are £5 per night or £20 for the omnibus ticket which entitles you to vote for the winner of the Punter's Prize.

# ALLAWAY AUTO ENGINEERS

Approved M.O.T. Test Station



*Now carry out pre-booked M.O.T.'s for Motor Cycles while you wait.  
Servicing and repairs for Cars, and Motor Cycles  
Tyres supplied and fitted.*

Open Mon - Fri 8.30am-5.30pm

Saturday 9am-1pm

**Unit D Whiteley Road  
Hithercroft Industrial Estate**

**Wallingford**

**Tel: 01491 833116**

## ODD JOB MAN

Offering completion of the following works to the highest standard

\*Fencing \*Decking \* Driveways \*Patios \*Garden Maintenance

LOGS FOR SALE (including kindling wood)

I also collect ALL scrap metal including cars, washing machines, tumble driers and all other scrap metal

As well as these services, I offer removals, house clearances and rubbish removal. I will also happily remove all garden waste including trees and wood. Tree wood is removed free of charge based on the amount and where the customer is based.

**For more information or a free quotation please call Nick on 07928775767 or 01189761460**

## ROOM SERVICE

*Your Local Friendly Cleaning Company*

Providing an excellent, professional service to homes and offices in your area. Daily, weekly, or whenever you need help.

*Ginny*

**07976 883165**

**roomservices@btinternet.com**



## Free to use ATM

**At Howbery Park  
in The Manor House**

**Come and Visit our Deli Bar/  
Coffee Lounge and try our  
NEW real coffee machine**

- Freshly made baguettes **(available 11am – 2pm)**
- Small selection of homemade cakes
- Friendly welcoming staff
- Beautiful surroundings
- Conference room hire available
- Free wi-fi
- Ample Parking

**Open Monday – Friday  
8.30am – 4.00pm**

Visit us, or call 822495 for more information.

**www.howberypark.com**



**HOME BASE  
MANAGEMENT**



**EXCLUSIVELY LETTINGS - Established 1989**

We are an independent company and offer exceptional service and exceptional care providing the highest standard of service to Landlords and Tenants.

We are ARLA trained, very experienced, friendly and informative; dedicated in caring for your property whether you are living overseas or closer to your property.

If you are thinking of renting your property, call us now.

**LET WITH CONFIDENCE - 01491 824470**

Ground Floor, 16b St Mary's Street, Wallingford OX10 0EW

email: hpm@clara.co.uk

www.homebasepropertymanagement.co.uk

# COULTON

## Plumbing & Heating

A local family business, based in Crowmarsh Gifford, providing a professional and quality service

**Boiler Servicing, Repairs & Maintenance**

Boiler Replacements • Heating Repairs

Landlord Safety Certificates

General Plumbing Maintenance & Repairs

Heating System Installation

Cylinder Repair & Replacement

Specialists in OIL & GAS

**T 01491 824486 M 07737 788773**

[coultonplumbing@hotmail.com](mailto:coultonplumbing@hotmail.com)

Proud members of  
**Checkatrade.com**  
Where reputation matters



For **ALL** your printing needs:  
Business Cards • Letterheads  
Comp Slips • Invoices  
Leaflets • Magazines/Journals  
Corporate & Wedding Stationery  
b/w or full colour - no job too small  
for **FREE** quotation  
**(01491) 836282** or  
Email: [print@albry.co.uk](mailto:print@albry.co.uk)

UNIT 2, ROCKFORT ESTATE,  
HITHERCROFT ROAD, WALLINGFORD, OXON. OX10 9DA

**NEW COLOUR COPYING FACILITY**

## Carpet & hard floor care

Vacuum cleaners, bags, filters, spares & repairs  
Carpet cleaning machines, shampoos & deodorisers  
Rotary floor polishers, pads, wax & polish. Scrubber-driers

 **CLEAN MACHINE** Hire & Sales

**01491 825600** [www.machinesthatclean.com](http://www.machinesthatclean.com)

St. Peter's Street Shops, Wallingford, OX10 0BG (behind Champions)

## To book the Pavilion or Hardcourt area in Crowmarsh...

phone Chris Strange on  
**07711 904252**,

or e-mail  
[chrisstrange47@gmail.com](mailto:chrisstrange47@gmail.com)

## Roy Windebank Auto Engineers Est 1983

Roy Windebank and his team of trained mechanics  
provide professional car servicing & repairs.

**SERVICING, CLUTCHES, BRAKES,  
EXHAUSTS, DIAGNOSTICS, MOT'S,  
TYRES, BATTERIES AND ALL REPAIRS.**

**01491 652345**

**Kentwood Farm, Papist Way,  
Cholsey OX10 9LJ**

<http://roywindebank.co.uk>

## To book North Stoke Village Hall

contact Nikki Arnfeld  
(839736, 07969 788766, or  
[narnfeld@yahoo.co.uk](mailto:narnfeld@yahoo.co.uk) )  
or Stuart Soames  
(836058, or  
[sjwsoames@btinternet.com](mailto:sjwsoames@btinternet.com))



Scott Gesner

**08718 244787**

[gesnergardening@yahoo.co.uk](mailto:gesnergardening@yahoo.co.uk)

[www.gesnergardening.co.uk](http://www.gesnergardening.co.uk)

Contact us for a free  
quotation





## St Mary Magdalene's Church Crowmarsh Gifford

Team Vicar: The Rev'd Kevin Beer  
34 Thames Mead  
Crowmarsh Gifford. OX10 8EY  
Tel: 01491 599873

Email: [teamvicar@wallingfordcofe.org.uk](mailto:teamvicar@wallingfordcofe.org.uk)  
Churchwardens:

Margaret Foster, tel: 836076  
Eva Thompson, tel: 201675

### Services for June

Morning prayer – every Friday at 9am			
Sunday 5th	Trinity 2	11am	Parish Communion
Sunday 12th	Queen's Official Birthday weekend	11am 5pm	Family Celebration Service Songs of Praise
Sunday 19th	Trinity 4	11am	Parish Communion
Sunday 26th	Trinity 5	11am	All Age Communion

Q: In this age of celebrity, who is the most photographed person on the planet? Here's a clue...

June sees our nation celebrate the 90th birthday of our Queen. For those below retirement age, it is hard to imagine life without Elizabeth II as our monarch. Many will not have known coins, bank notes or stamps without her image on them. When someone is so established in our lives, there is a danger that we take her for granted, so it is right that we remember her life of dedicated service over the weekend of June 11-12th, in a celebratory Flower Festival in the Parish Church, including a special thanksgiving service at 11am on Sunday.

Sometimes, I find a simple prop helps me to pray – you might like to join me in taking a look at a coin: on it you will find “DG REG FD” or “DEI GRA REG FID DEF”, the Latin abbreviation for “Reigning by the grace of God, Defender of the Faith”. Defending the faith is a role that the Queen has taken very seriously. Rather than vapid political soundbites about “British values”, she regularly

testifies to her personal faith in Jesus Christ as the Son of God who entered into human history to reveal his love for us.

In her Christmas broadcasts, she has spoken of Christ as ‘an inspiration’, a ‘role model’ and ‘an anchor’ in her life, where she makes reference to the circumstances of his birth, to his death and to his resurrection - for example, in 2002: “I know just how much I rely on my faith to guide me through the good times and the bad. Each day is a new beginning. I know that the only way to live my life is to try to do what is right, to take the long view, to give of my best in all that the day brings, and to put my trust in God... I draw strength from the message of hope in the Christian gospel.”

As we sing our national anthem, we can give thanks for our gracious and noble Queen Elizabeth II who has long-reigned over us and continue to pray for her... God save the Queen!

**The Revd Kevin Beer**

## WANTED – by The Friends of Wallingford Day Centre

As part of the summer fair which they are organising on 9th July to raise funds for the Centre, “The Friends” are running a jewellery stall. They would be delighted to receive any

unwanted jewellery to sell on the day of the fair. If you have any you would like to donate, please take it to the Wallingford town information centre (under the town hall) or telephone me on 839425.

**Eira E Hoare**  
**Friends of Wallingford Day Centre**

## Wallingford U3A

Our June speaker will be Tony King; his talk will be "Hollywood to Broadway by Train". After his last talk we were very keen that he should come back again. His lectures are quirky, but fascinating, entertaining and wonderfully illustrated. If you can find time on 1st June, join us at Crowmarsh Village Hall at 2pm. After the talk there is tea and cheerful conversation. Visitors are always welcome.

Our June outing is on Thursday 16th. We will be visiting Lacock Abbey (a National Trust property), near Cheltenham. The village is used as a picturesque location by film and TV companies. The Abbey was built in 1232 beside the River Avon. The museum celebrates William Fox Talbot, the photography pioneer. There are good shops and plenty of places to eat.

Cost for the trip is £20 for the coach, plus entrance costs if not a member of the National Trust. For more information, phone Eileen on 825156.

There are still a few places on the holiday to Yorkshire, based at Harrogate, from 1st to 5th July. Eileen has information on that too. Jim is taking names for a theatre trip to Sonning on Saturday 29th October to see *Blithe Spirit*. The cost for lunch and the matinee performance is £45.

Our newest interest group, Local Churches of Interest, is proving very popular. The next visit will be to Warborough Church. Meet at the Church at 11am for the guided tour, and then we will gather for a pub lunch at 12.30. For more information, phone Hermione on 01865 858024. Apart from this group there are another nine groups covering a variety of interests.

There are two U3As in Wallingford, Wallingford U3A and Thames side. They are affiliated, exchange information and get on fine. Wallingford U3A was the original organisation which spawned two others. We are celebrating our 30th Anniversary this year. We are the smaller organisation of the two, and visitors find us very friendly. If you are considering joining the U3A we might be a good introduction.

For more information, phone Jill on 835994, or Hermione on 01865 858024, or visit our website: Google u3awallingford; or just turn up at Crowmarsh Village Hall at 2pm on the first Wednesday of the month to see what we do.

Meet new people. Make new friends!

## Didcot and Wallingford Ramblers Walks for June

### Tuesday 7th

**10:00 SU578940 Moderate 9 miles**

Meet at Dorchester, Bridge End car park. This is a circular walk along Thames Path to Long Wittenham and Days Lock. Bring packed lunch. Registered Assistance Dogs only. Contact Barry Cowlard, 838707.

### Friday 10th

**18:00 SU614915 Moderate 5 miles**

Meet at the junction of Church Road and St Helens Avenue, Benson for a circular walk via Warborough and Shillingford, returning on Thames Path. Café at end. Registered Assistance Dogs only. Contact Kate Hart, 838689 / 07966 756770.

### Sunday 12th

**14:00 SU526882 Moderate 6 miles**

Meet at East Hagbourne at Upper Cross near the church. This is a monthly village ramble that varies from 5 to 7 miles. Contact Paul Chambers, 01235 816365.

### Sunday 19th

**11:00 SP433142 Moderate 8 miles**

Meet at Hanborough railway station car park. Catch 10:35 train from Didcot arriving at Hanborough at 10:59 (£7.40 rtn). This is a circular walk via East End to Oxfordshire Area picnic. Return via Oxfordshire Way, Park Farm and High Lodge. Catch the 15:33 train from Hanborough back to Didcot. Bring picnic lunch.

Contact Nick Morley, 07843 006704, for more details.

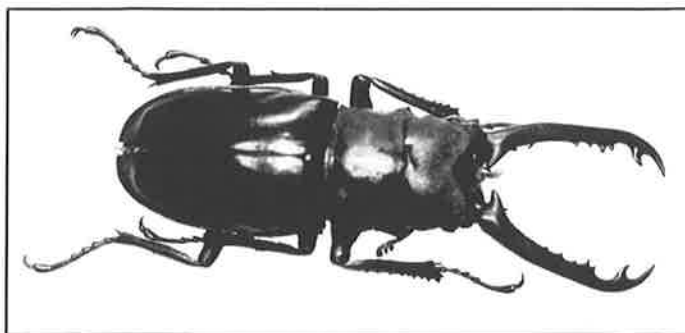
### Wednesday 29th

**10:00 SU668874 Moderate 7 miles**

Meet at Nuffield Church for a circular walk via Ipsden and the Ridgeway. Contact Sue White, 834370 / 07814 165940.

## Spotted a stag beetle?

**Help save the UK's largest land beetle by recording your sightings**



Like many British species, it is becoming rare to catch a glimpse of the formidable looking, but friendly stag beetle (*Lucanus cervus*). Sadly, their numbers are dwindling across Europe due to loss of habitat and predators including cats, magpies and humans.

In parts of Britain stag beetles are already extinct, so help is needed to prevent further decline. This spring, People's Trust for Endangered Species (PTES) is asking the public to record any sightings of these iconic insects by taking part in their annual Great Stag Hunt.

Stag beetles emerge from mid-May onwards, and live in gardens, parks, woodland edges and traditional orchards. Stag beetles are prevalent throughout southern England and coastal areas of the south west, while they are less common in the north of England and the South Downs.

Stag beetles can reach up to 75mm in size, which makes them second largest of all UK beetles after the water beetle, but also easy to spot! For the majority of their life cycle, stag beetles remain underground as larvae, feeding on rotten wood. They can remain as larvae for as long as 7 years, and once fully grown they build a large cocoon in the soil where they pupate before finally metamorphosing into their adult, more recognisable, form.

Last year's Great Stag Hunt saw 5,796 recorded stag beetle sightings. There are no set rules for the Great Stag Hunt, just simply record any sightings of stag beetles online at [www.ptes.org/stagbeetles](http://www.ptes.org/stagbeetles), which will help PTES' wider conservation strategy.

Gardens in particular are very important habitats, as stag beetles rely on decaying wood in contact with soil to feed on as larvae. People can help by retaining dead tree stumps or building a log pile in their gardens to ensure there is a good supply of dead wood for female stag beetles to lay their eggs in.

To further raise the profile of beetles, PTES is working with MG Leonard, author of the best-selling children's novel *Beetle Boy*. This heart-warming story follows the adventure of a young boy and his friend Baxter, who is in fact a beetle. *Beetle Boy* is the first part of The Beetle Trilogy, and was published in March 2016 by Chicken House.

For more advice on how to identify a stag beetle, and to find out what to do if you find a stag beetle or dig up stag beetle larva, visit: [www.ptes.org/stagbeetles](http://www.ptes.org/stagbeetles).

## Cream Tea in a Box

Cream Tea in a Box is available again this year from Winifred Lay. Profits from the sales go to Action Medical Research for Children ([www.action.org.uk](http://www.action.org.uk)) in co-operation with Great Ormond Street Hospital.

Each box contains two scones, two small pots of jam, clotted cream, a knife, a serviette and a teabag. The boxes costs £6 and can be ordered from Winifred on 839390 or [winifred\\_lay@hotmail.com](mailto:winifred_lay@hotmail.com) – or you can pick up an order form from the Village Stores.

Boxes must be collected on Friday 1st July between 11am and 2pm from Penny Farthing, 49 The Street, Crowmarsh.



## Zumba Gold for the over 60s

Zumba Gold will be taking place in Crowmarsh Village Hall every Wednesday from 9.30 to 10.30am (apart from the last Wednesday of each month), starting on 29th June. The class is perfect for active and non-active older adults who like to exercise to music which can be performed at a lower intensity. The benefits of the class include all elements of fitness: cardiovascular, muscular conditioning, flexibility and balance. Price: £5

# Crowmarsh Parish Council News

Chairman: John Griffin, 29 Thames Mead, Crowmarsh Gifford, tel. 838523,  
email: [johngriffin@phonecoop.coop](mailto:johngriffin@phonecoop.coop)  
Parish Clerk: Sue Rance, 2 Home Farm, Crowmarsh Gifford  
Website: <http://www.crowmarshgifford.org.uk/index.php>

## Notes of the Parish Council Meeting held at Crowmarsh Gifford Village Hall on Thursday 12th May 2016

*Present: Councillors John Griffin (Chair), Nigel Hannigan, Andrew Hermesen, Stevenson, Stephen Sherbourne, Ann Sharp, David Mannering and Stuart Soames; Sue Rance (Clerk) and Ms CM Malcolm (Finance Officer); County Councillor Mark Gray (part of the meeting)*

*Apologies: Councillors Andrew Johnson and Francesca Jones*

Councillor John Griffin was reelected as Chairman and Nigel Hannigan as Vice-Chairman.

### Matters from minutes of previous meeting

County Cllr Gray recommended consulting as soon as possible on use of Section 106 funds from proposed development at the former Springs Hotel site in North Stoke for improvements to road safety, such as a chicane at the entrance to the village. He would ask Mark Francis of OCC Highways to visit the site.

Contractors Scofell have now started grass cutting. The contract will be reviewed at the end of the summer to ensure that grass cutting will start more promptly next year.

The road to the Riverside Park has been built but is not yet open. Cllr Griffin will speak to John Backley about the plans for the road and the delay in the county council adopting it, as well as any parking restrictions necessary. The Clerk will check when the developers will transfer the public open space to the Parish Council.

### Finance

Payments made in April were approved. The financial position at year end is broadly the same as last year with an underspend of approximately £14,000. Expenditure on the

recreation ground and pavilion was lower than last year but income was also lower.

The annual internal audit report was approved and the annual governance statement and Annual Return were agreed.

The electricity and gas contracts were reviewed and a three-year contract will be signed with British Gas for both electricity and gas.

### Queen's 90th birthday celebrations

Cllr Soames reported that four community events are planned in the parish to mark Her Majesty's 90th birthday: one each in North Stoke, Mongewell and Crowmarsh Gifford plus an event for the Scouts, Beavers and Cubs. It was agreed to apply for a grant from SODC to support the four groups.

### County Councillor's report

Mark Gray reported that the A4074 road surface is to be repaired near the Benson turning between June and August.

Traffic calming at the A4074 Portway is being explored by the Parish Council with Cllr Gray's help. Initial costings are being discussed for a light-controlled pedestrian crossing and one quote has been received for a topographical survey. The next stage will be a traffic survey but there is the possibility of development on land nearby that might affect the road layout and might contribute to the scheme, so there will need to be discussions with several parties.

The Parish Council will discuss at the next meeting whether to bid to take on some of the delegated work from the County Council under the Oxfordshire Together project, to achieve better or more responsive services and take more ownership of the local environment. It is hoped to arrange a meeting with Tim Shickle, who leads on this project.



Cllr Gray reported that secondary school places have been allocated with no significant problems.

Children's Centres are to continue until March 2017 under a new funding plan including a small budget from OCC.

## **Planning**

### *SODC decisions:*

P16/S0844/HH: Single storey side and rear extension (permission previously granted under P15/S3211/HH). 14 Benson Lane, Crowmarsh Gifford, OX10 8ED.  
PERMISSION GRANTED.

P16/S0854/FUL: Construction of a new building for housing new boiler system and all associated pipework and equipment. Scotia Gas above ground installation off the A4074, Ipsden (in the parish of Crowmarsh).  
PERMISSION GRANTED.

### *Parish Council responses to SODC:*

P16/S1107/HH: Two-storey rear extension. 10 Jethro Tull Gardens, Crowmarsh Gifford, OX10 8DS.  
RECOMMEND APPROVAL.

P16/S1130/LDP (Certificate of Lawful Development): Erection of bay window to rear of existing dwelling. 7 Benson Lane, Crowmarsh Gifford, OX10 8ED.  
NOTED (no comments accepted on this).

P16/S1156/LB (Listed Building Consent): Single-storey conservatory to the rear. 2 Church Cottages, Church Lane, North Stoke (in the parish of Crowmarsh), OX10 6BH.  
RECOMMEND APPROVAL.

P16/S1178/FUL: Erection of antenna (transmit and receive antennae). Boiler House, Howbery Park, Crowmarsh Gifford, OX10 8BA.  
RECOMMEND APPROVAL.

P16/S1234/LB (Listed Building Consent): Installation of new condensing gas boiler flue. Howbery Park, Benson Lane, Crowmarsh Gifford, OX10 8BA.  
RECOMMEND APPROVAL.

P16/S1250/HH and P16/S1251/LB (Listed Building Consent): Extension and refurbishment of the existing stable block. Chaise House, 67 The Street, Crowmarsh Gifford, OX10 8EF.

RECOMMEND APPROVAL in each case.

## **Tree preservation order**

SODC have placed a Tree Preservation Order on a number of trees at 113 The Street, Crowmarsh Gifford, OX10 8EF.

## **Telecommunications cabinet**

BT Openreach has announced its plan to install a new telecommunications cabinet in North Stoke as part of expanding broadband accessibility and the government's Digital Britain policy. The proposed location is opposite 8 Wallingford Road, North Stoke OX10 6BD. Cllr Soames declared an interest as this is close to his property. We hope this will benefit the residents of North Stoke.

## **Committees**

The Environment and Recreation Ground committee will meet next in June.

Cllr Jones (Parish Transport Representative) and County Cllr Gray had attended the county-wide meeting on bus services. The 139 service from Wallingford to Henley will be re-routed via Crowmarsh Gifford. The 136 bus will serve both Wallingford to Cholsey and Wallingford to Benson. Timetables and fares might change. As reported, the 134 GoRide bus service through Crowmarsh Gifford and North Stoke will continue with the current timetable until 20th July and then operate without subsidy with a reduced timetable and higher fares. Look out for new timetables in the next Crowmarsh News.

## **Update on website**

Cllr Stevenson reported that the website is now back to normal after a hacking attack and councillors may be given access to update the site. The annual return and auditor's report will be posted on the website as well as the publications scheme and agendas for Parish Council meetings.

## Correspondence

- Tim Smith, a community project worker at Wallingford School, is trying to develop relationships between students and local organisations. He would like to hear about any projects that may be suitable for the students to assist with.
- Invitation to a Ewelme and Benson Liaison Meeting with Grundon's on Monday 16th May: Cllr Sherbourne plans to attend. It was suggested that Grundon's might provide gravel to improve the surface in Watery Lane.
- Invitation to the Mayor's Service on Sunday 15th May: the Chairman would attend.
- Invitation to the annual reception at RAF Benson on Thursday 19th May (which co-incides with the Annual Parish Meeting): Councillors Johnson and Sherbourne would attend.

### Next meeting

The next Parish Council meeting will be held on Thursday 9th June at Crowmarsh Gifford Village Hall, starting at 7.30pm.

## Wallingford and District Stroke Club

Wallingford and District Stroke Club meets on the fourth Thursday of each month at Crowmarsh Village Hall for activities and companionship, tea and cake. In the summer months we arrange outings, both locally and further afield, using the Wallingford Coach with its accessible platform.

We'd love to welcome more members (fees are very reasonable at £2 per month). If you, or someone you know, would like to join us – or just give us a try – please contact Norman Goodall on 01235 834503 or Jenny Tatman on 01491 839499 and we'll be pleased to talk to you.

### Useful telephone numbers

**Crime Stoppers** 0800 555 111

**Police non-emergency number** 101

## Crowmarsh Village Hall AGM

The Annual General Meeting of Crowmarsh Gifford Village Hall Committee will be held on Monday 27th June at the village hall, starting at 8pm. All welcome. Please come along.

## Open Gardens in North Stoke

**Sunday 26th June, 2 to 6pm**

If you are looking to spend a relaxing afternoon in a pretty Thames-side village, then come and join us in North Stoke on Sunday 26th June. Eight residents have kindly offered to open their gardens for public viewing. Two are particularly large gardens with river frontages and others are small and interesting with particular delights to discover.

There will be an opportunity to meet the garden owners, to ask questions about plants, wildlife and the village, before relaxing with a Strawberry Cream Tea in the Village Hall. There will be home-made cakes and plant sales in conjunction with a local Nursery.

The starting point is the Village Hall (OX10 6BL) where tickets can be purchased for £5 per adult (children free) – sorry, no dogs! Special parking arrangements have been made for the day.

If time permits, a visit to our historic village church may be an added interest. The church is the only one on the entire length of the Ridgeway Long Distance Path. The Chancel was built in 1230-1240.

All proceeds will go towards a new kitchen for North Stoke Village Hall.

### Sports Facilities for Hire

You can hire the Dance Studio, Sports Hall or the Astroturf at Wallingford School.

Call Emma Freeman on 829762, or e-mail [FREEMANE@wallingfordschool.com](mailto:FREEMANE@wallingfordschool.com)

## DIRTY CARPETS, UPHOLSTERY, RUGS



Most carpets dry within the hour

Unbeatable results, removes almost all spots & stains call

### GRIMEBUSTERS

01865 726983 01235 555533

[www.grimebusters.co.uk](http://www.grimebusters.co.uk)

## THOMAS MERRIFIELD

Surveyors • Auctioneers • Estate Agents

72 High Street, Wallingford, Oxon. OX10 0BX

Tel: 01491 - 833833 Fax: 01491 - 833055

email: [wallingford@thomasmerrifield.co.uk](mailto:wallingford@thomasmerrifield.co.uk)

[www.thomasmerrifield.co.uk](http://www.thomasmerrifield.co.uk)



### CLEANER, GREENER OVEN CLEANING

Ovens | Hobs | Microwaves | Extractors | BBQs

**WE PUT THE SHINE BACK INTO THE INSIDE AND OUTSIDE OF YOUR OVEN!**

T. 01491 837420 E. [info@proovencleaning.co.uk](mailto:info@proovencleaning.co.uk)

[www.proovencleaning.co.uk](http://www.proovencleaning.co.uk)

## GORING & STREATLEY CLINIC

trained

to fight

**PAIN**



The Community Centre  
Station Road, Goring

For treatment of  
Ligaments & Muscles  
Rheumatism & Arthritis  
Sciatica  
Backache  
Lumbago  
Joint Pains  
Sports Injuries  
Headaches & Stress

01491 873 874  
or out of hours  
07775 714 300

Natalia Beddoe BSc(Hons)Ost  
Registered Osteopath  
Victoria Swan MAO  
Registered Osteomyologist

## Early Days Nursery

Encouraging children's natural curiosity  
The Old School, Ipsden, Wallingford

- Independent Nursery est. 1992
- Children from 5 months to 5 years
- Set in countryside with fields and woodland to explore
- Holiday club up to 11 years offering multi-activities and days out
- Flexible sessions within 7.15am-6.15pm
- Giving your child the best start for school

To book a visit or holiday club contact Sandy:  
(01491) 681101 or [enquiries@earlydays-nursery.co.uk](mailto:enquiries@earlydays-nursery.co.uk)

[www.earlydays-nursery.co.uk](http://www.earlydays-nursery.co.uk)



**PJWITNEY ELECTRICAL  
CONTRACTORS LTD**



Installation & Repair  
Test & inspection  
Free estimates

Over 20 years of quality workmanship

Phone Fax 01491 837939

Mobile 07740981597

Email [peter.witney@sky.com](mailto:peter.witney@sky.com)



*Gents  
Hairdressing*  
Est. 1958

21 St. Mary's Street, Wallingford  
Oxfordshire OX10 0EW

Telephone : 01491 837124

#### OPENING HOURS

MONDAY	8.30 am - 6.00 pm
TUESDAY	8.30 am - 6.00 pm
WEDNESDAY	Closed
THURSDAY	8.30 am - 9.00 pm
FRIDAY	8.30 am - 9.00 pm
SATURDAY	8.00 am - 6.00 pm

[www.thamessalon.com](http://www.thamessalon.com)

## WHAT'S ON – JUNE 2016

### Regular events and meetings

1st & 3rd Mon	19.00	Knitting Circle	Queen's Head, Crowmarsh
Every Tuesday	19.00-21.30	Short Mat Bowls	Crowmarsh Pavilion
2nd & 4th Weds	Evenings	Crowmarsh Ladies	Telephone 201756
Every Thursday	14.00-16.30	Short Mat Bowls	Crowmarsh Pavilion
Every Thursday	19.45-22.00	Wallingford Photographic Club	Crowmarsh Pavilion
Every Friday	08.30-11.15	Wallingford Country Market	Regal Centre
Every Saturday	10.00-12.00	WAGS Store open	Centre 70
Most Saturdays	10.00-13.00	Local Producers' Market	Regal Centre

### This month

Wednesday 1st	14.00	U3A: Tony King, "Hollywood to Broadway by Train"	Crowmarsh Village Hall
Saturday 4th	All day	Seniors Citizens Day	Cholsey and Wallingford Railway
Saturday 4th	10.30	Sue Ryder Sale	Nettlebed
Sunday 5th	13.30	CTC 20-mile road ride	Meet at Wallingford Market Place
Wednesday 8th	19.30	Henley Philatelic: Visit from Southampton PS	Bix Village Hall
Wednesday 8th	19.45	TWHAS talk: Benson, from Anglo-Saxon Estate to Airfield	St Mary's Church, Wallingford
Thursday 9th	19.30	Crowmarsh Parish Council Meeting	Crowmarsh Village Hall
Friday 10th & Saturday 11th	Various	Beers and Blues festival	Regal Centre Wallingford
Saturday 11th & Sunday 12th	All day	Annual Summer Fete and Flower Festival	St Mary Magdalene Church
Sunday 12th	13.30	CTC 10-mile introductory road ride	Meet at Wallingford Market Place
Saturday 18th	19.30	Benson Choral Society concert	Dorchester Abbey
Sunday 19th	All day	Father's Day Special	Cholsey and Wallingford Railway
Sunday 19th	Afternoon	Roke and Benson Band Concert	Wallingford Castle Gardens
Sunday 19th	All day	Model Railway Exhibition	Wallingford School
Wednesday 22nd	19.30	Henley Philatelic : President's celebration of 50th Anniversary	Bix Village Hall
Saturday 25th	10.30	Sue Ryder Sale	Nettlebed
Sunday 26th	14.00-18.00	Open gardens in North Stoke	Start at Village Hall
Saturday 25th & Sunday 26th	All day	Transport weekend	Cholsey and Wallingford Railway
Sunday 26th	All day	Festival of Cycling	Wallingford Centre
Monday 27th	20.00	Village Hall Committee AGM	Crowmarsh Village Hall