

Crowmarsh News

Issue 452

May 2016

The *Crowmarsh News* is a self-funded publication, and we regret that we are unable to accept unpaid advertising, even from local businesses and societies.

We welcome material for inclusion but do not necessarily endorse the views of contributors. We reserve the right to refuse material or to shorten contributions as may be appropriate. Editorial decisions are final.

ADVERTISING RATES

The *Crowmarsh News* is currently distributed to over 700 households in Crowmarsh Gifford, North Stoke and Mongewell.

Our rates for a one-eighth page display advertisement (nominal 9cm wide x 7cm tall) are:

1 month – £7.50
3 months – £21.00
6 months – £39.00

Leaflet distribution

For a single sheet loose insert in the *Crowmarsh News* (size up to A4), our current rate is £25.00 for a single month. Advertisers must supply their own inserts (740 copies, please).

Cheques should be made payable to Crowmarsh News Association.

The Crowmarsh News Team

The *Crowmarsh News* is run by the Crowmarsh News Association, a group of local volunteers.

Editorial and Layout: James and Toni Taylor

Editorial support: John Griffin

What's On listings: Julian Park

Advertising: Pat Shields

Distribution: Frank Sadler and Team

Next month's issue

All new advertisements and all copy for the June issue of *Crowmarsh News* must reach us before our 20th May deadline.

For all items of news, articles or correspondence, please e-mail

crowmarsh.editor@gmail.com

or deliver to the Editor at 57 The Street.

For all advertising, please contact

crowmarshadvertisers@gmail.com

or deliver to The Old School, Benson Lane.

Is your garden working for you?

Whether you want to transform your garden or just make it more manageable, GreenArt can help. We've designed, built and improved hundreds of gardens for over 20 years. We offer a professional service and take pride in our work.

Call: 01491 280447 / 07901 977290
email: info@greenart.uk.com

www.greenart.uk.com

green art
LANDSCAPE AND GARDEN DESIGN



SHOE REPAIRS

Leather Stitching Repairs

KEY CUTTING



FEET FIRST
Quality Shoe Repairs

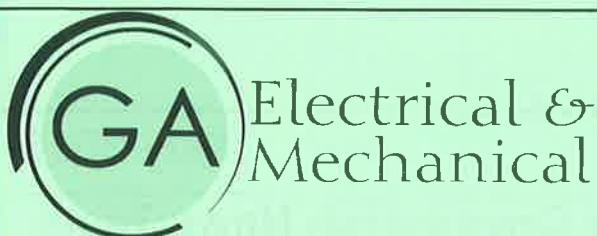


Contact **GARY**

21 St. Mary's Street Wallingford.
Telephone (01491) 825224

Watchstraps
Batteries

Travel Goods
Luggage



Quality work • Qualified electricians • Fully guaranteed
Whatever your electrical challenge we are on hand to help

T 01491 520787
E info@gaelectrical.co.uk
W www.gaelectrical.co.uk



GO DIAMOND
School of Motoring

info@godiamond.co.uk
www.godiamond.co.uk

Graeme Rolfe (ADI)
Tel: 07710 693397

Ben Robins (ADI)
Tel: 07533 819133

LEARN TO DRIVE

Fully Qualified, DSA approved driving instructors.
Calm, friendly and professional tuition.
Lessons to suit you – from one hour introductory/assessment lessons to intensive courses.
Pass Plus registered • Dual controls • Air conditioning
Based in CROWMARSH GIFFORD, but covering the surrounding areas, including Wallingford, Benson, Cholsey, Watlington, Henley, Didcot, Abingdon, Oxford and Reading.

HOWARD CHADWICK

A caring family owned and managed Funeral Service

- Dedicated Private Chapel of Rest •
- Golden Charter Pre Paid Funeral Plans •
- Specialists in Memorial Stones and Designs •

33 Benson Lane, Crowmarsh,
Wallingford OX10 8ED
Tel: 01491 825222



G.R. Galliford

Graham

07762650809

01491 824583



Mini Digger with Operator
Block Paving
Driveways
Patios
Fencing
Drop Kerbs
Groundwork

Patricia Newman Practice

CHARTERED BUILDING SURVEYORS

2D & 3D colour plans
of your project for
Planning, Building
Regulations & Project
Management

Call for a no obligation fee
quote

Party Wall Surveyors
Planning Appeals
Surveys



9 St. Mary's Street, Wallingford 01491 833373

CROWMARSH TYRE

BALANCING, TRACKING
& PUNCTURES. LARGE
STOCKS OF LEADING
MAKES

AND
EXHAUST CENTRE

01491 834088

BEADLE ESTATE, HITHERCROFT ROAD,
WALLINGFORD, OXON. OX10 9GW



BATTERIES,
COMPREHENSIVE
STOCK FOR BRITISH,
JAPANESE AND
EUROPEAN CARS
24 MONTHS
UNLIMITED
MILEAGE
GUARANTEE

Wallingford Day Centre Summer Fair

On Saturday 9th July, the Friends of Wallingford Day Centre (known as the Health and Wellbeing Centre) are holding a Summer Fair at the Centre in Millington Road, Wallingford. It will start at 2pm and run until 5pm. At 4.30pm the winning tickets for the raffle will be drawn (1st prize £100, followed by other generous prizes). Tickets for the raffle are already being sold at various events including the Car Rally on 8th May.

All money raised will be used to enhance the activities already provided for the clients at the Day Centre by the wonderful staff there.

We have already booked a variety of stalls. There will be live music and afternoon tea will be served. We are a very small committee and would love to hear from you if you feel you could help in any way on the day or in preparations beforehand. We would very much like to have a book stall, could you do that? Please contact me on 839415 if you could help in any way.

Ample free car parking will be provided in the field in front of the Centre (by kind permission of Wallingford Academy).

This is a fairly new venture for the Friends, please make a note of the date and come along to help make the event a success. Fingers crossed from now until 9th July for good weather.

Eira E Hoare
Friends of Wallingford Day Centre

Dust off that bike!

Is your bike gathering dust in a corner of the shed or garage? Have you thought about joining an organised cycle ride, but wondered whether it would be too far or too fast for you? Not sure that your gears and brakes are in working order? Well, this CTC Wallingford event on Sunday 12th June is for you!

Get your bike checked out by our mechanic in Wallingford Market Place between 11am and 1pm. The check is free, but you will have to

pay for any spares needed. Then join us in the Market Place at 1.30pm for a relaxed 10-mile ride. We'll explore some local lanes and celebrate our success in a local café when we get back to town at around 3pm. Under 13s must be accompanied by an adult. 13 to 17 year-olds can come independently, but must bring a completed parental consent form, available from me.

We are planning another short (10-12 mile) bike ride from Wallingford Market Place at 1.30pm on Sunday 3rd July. You don't need to be a member to take part: come and try out a few routes with us before you join.

For more information, contact Alison Smart (alisonjsmart@gmail.com or 836086).

Police and Crime Commissioner Elections

Elections for our local Police and Crime Commissioner will be held on Thursday, 5th May.

There will be polling stations at the village halls of both North Stoke and Crowmarsh Gifford, and these will be open from 7am to 10pm.

For information about the candidates, please see www.choosemypcc.org.uk

Flood alleviation scheme

The Oxford Flood Alleviation Scheme is now developing plans to reduce flooding in Oxford. Communities downstream of Oxford, such as ours, also have an interest in the scheme and in what effect it could have on them.

The scheme is being designed to ensure the risk to communities downstream will not be increased, and its organisers are offering to hold a series of focus groups to help plan wider downstream engagement in the coming months.

if you wish to be kept updated on the work that is under way, please make contact at oxfordscheme@environment-agency.gov.uk. For more information, visit www.gov.uk/government/publications/oxford-flood-risk-management-scheme

Crowmarsh Pre-school

This month we continue to help prepare children who will be transferring to school in September. These sessions are enjoyable for children and Key Persons, as they share some focussed time together, covering all areas of learning and culminating in school visits. Children are enjoying receiving their first books on the Oxford Reading Tree, and developing their own stories.

This coming month we look forward to exploring our seeing eyes, hearing ears, touching hands, smelling noses and tasting tongues – exploring a sense each week.

Our Rising 5s continue to enjoy their weekly visits to Forest School, and are currently appreciating seeing the first signs of spring, identifying and naming new flowers.

14th May – Crowmarsh Pre-School Village Quiz

It's not too late to come along for some Quiz and Auction fun; tickets are available from the village store. If you can't make it on the night you can still join in by buying a raffle ticket or bidding on the silent Auction. See the Crowmarsh Pre-school webpage for the Auction list and bidding instructions. Final bids due by Friday 13th May. Good luck and thank you for your continued support.

Our Outstanding Pre-School has a strong emphasis on learning through play. We are open to all children between the ages of 2 and 5 years and provide the perfect (and FUN) preparation for children getting ready to start school.

We offer two sessions a day during term time. The morning session runs from 8.45 or 9am to 12pm, and the afternoon session from 12 noon to 3pm. Lunch club is from 12 to 1pm and may be added on to the morning session.

To find out more information about the pre-school, have a look at our website (www.crowmarshpre-school.org.uk/), call our Manager, Dilys Beaumont, for a chat on 07951 599 623, or e-mail Vikki at admissions@crowmarshpre-school.org.uk

Open Day at Wallingford Tennis Club

On Sunday 8th May, from 2 to 5pm. Portcullis Tennis Club (at Wallingford Sports Park, Hithercroft Road, Wallingford) is inviting everyone to come along for free fun at its annual Open Day and the chance for adults and juniors to receive prizes and special offers.

Club Chairman Mark Goodman said: "Our open day is not only about encouraging people to consider becoming members. We want everyone to try out tennis, see our facilities and have a fun day. We are a very sociable club with five floodlit, year round courts, four well-attended club sessions each week, a full competition programme, professional coaching for adults and juniors alike and an array of social events."

As a special offer, any junior players (aged 3 to 18) who sign up as club members on the open day will receive four coaching sessions for just £4 (a saving of over £20). Both adults and juniors attending on the day will be entered into a prize draw to win two junior annual memberships (one aged under 11 worth £18 pa and one aged 12-25 years, worth £50 pa) and one adult membership (worth £120 pa for 26-63 year olds).

Coaches and league players will lead sessions of free tennis for children aged 5 and over, to adults of all ages! Apart from joining in with the coaching and match play sessions, visitors can join in on a fitness-based cardio tennis session. Light refreshments are available.

Anyone wishing to attend the Open Day should, ideally, email Nicola@implementor.biz to register their interest or just turn up on the day.

Portcullis Tennis Club has over 270 members drawn from a wide area of South Oxfordshire. For more details see www.Portcullistennis.net

Membership packages are extremely reasonable compared with all major gym chains. A family of four can play all year for the equivalent of just 71 pence a day! An individual aged from 5 to 25 can play for only £50 per year and 26-65 for only £120 pa.

The Thames Run

Wallingford 10K & 5K Thames Run, Sunday
22nd May 10am Crowmarsh Gifford Primary
School.

This is the 9th year of the 10k run and the 2nd year of the 5k run which attract over 400 runners, their families and friends from the local area as well as from across Oxfordshire, Berkshire and Buckinghamshire. This year we have lowered the 5k age to 14 years, to encourage more young people to take part.

The Thames Run is a multi-terrain route along local footpaths and the banks of the River Thames, and back through the historic market town of Wallingford. Runners complete one circuit of the route for the 5k event and two circuits for the 10k.

The Wallingford 5k and 10k Thames Run is run by volunteers to raise money for two local Oxfordshire charities. This year we are proud to support Crowmarsh Gifford Primary School PTA and Style Acre, a charity committed to supporting the needs of people with learning disabilities in our community.

The start and finish point for this event is Crowmarsh Gifford Primary School. Refreshments and entertainment will be available at the end of the race for all to enjoy.

Entries are now open on our website www.thamesrun.co.uk and you can follow us on our Facebook page Wallingford Thames Run 10k.

We look forward to seeing you there!



Beacon Flooring
A Family Run Business

Carpet - Wood - Vinyl - Karndean

Free fitting on carpet orders over £150

16 High Street, Goring on Thames, RG8 9AR
01491 454095 beaconflooring@aol.co.uk
www.beaconflooring.co.uk

Oxon Foot Care

Mobile Foot Health Practitioner



Providing complete foot care in the comfort of your own home in South Oxfordshire and surrounding areas.

Treatments include:
Calluses and Corn Removal
Ingrown/ Long Nails Cut
Verrucae Treatment
Athletes Foot
Diabetic Foot Care

For appointments contact Keith on
t. 07802 784 444
e. info@oxonfootcare.com

www.oxonfootcare.com
Registered Member of the British Association of Foot Health Professionals

E&J MOTORS
MOT Centre

**DOES YOUR CAR NEED
AN MOT?**

**What about Wallingford's newest
and most modern mot centre?**

01491 839388

E&J Motors
(Behind Esso Garage)
Ayres Yard, Station Road, Wallingford.

MEET - DRINK - EAT



Opening hours April - September
Monday 8am - 6pm
Tuesday - Sunday 8am - 10pm

Apply for the waterfront reward card:
Collect points on everything you love

Summer evening bistro
Open until the end of September, so make a note to pop by for an evening meal, light bite or drinks!

Food & Drink served all day
Benson, Wallingford, Oxon, OX10 6SJ
info@waterfrontcafe.co.uk

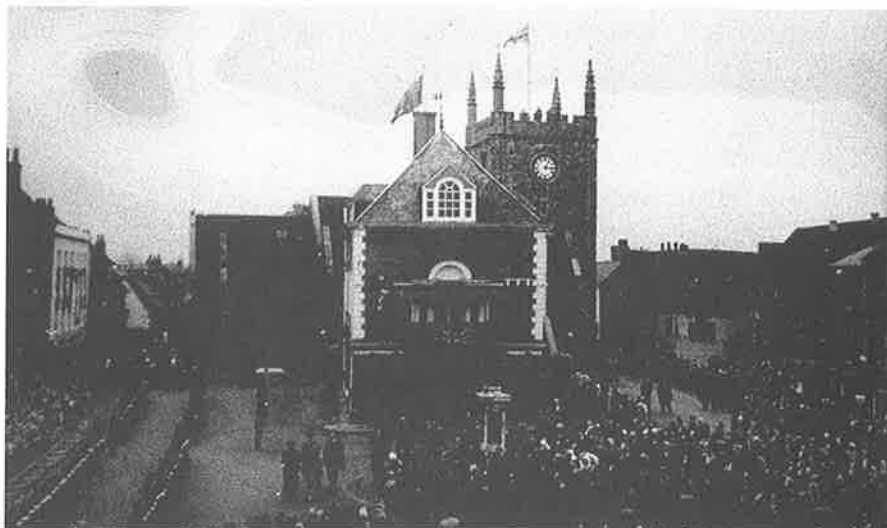
WATERFRONT CAFÉ
BAR-BISTRO

01491 833732
www.waterfrontcafe.co.uk



The Queen's visit to Wallingford and Crowmarsh, 1956

Royalty over the centuries have often visited Wallingford, but none could have been given the welcome that the Queen was given as she entered the Market Place on Friday 2nd November 1956. The Market Place was a blaze of colour and the Town Hall had been decorated internally and well as externally.



An hour before the Queen was due to arrive, a detachment from RAF Benson and uniformed members of local organisations, which included the Royal Berks Army Cadet Force, St. John's Ambulance, the Red Cross, Boy Scouts and Cubs, Girl Guides and Brownies, took up their positions in the Market Place. A space in front of the Town Hall had been reserved for over 100 disabled and elderly people, who were provided with chairs. Space had been reserved for school children behind the seated elderly townspeople.

The guests assembled in the Town Hall some fifteen minutes before the Queen's arrival. They included Airey Neave MP, General Sir Miles and Lady Dempsey, Chairman of the Wallingford District Council Alderman W J Cumber and Mrs Cumber, the Commander of Brock Barracks, Reading, Major Daw and Mrs Daw. At the same time the bells of St Mary's started a greetings peal.

There were a few moments of anxiety as, unusually, the Queen was a few minutes late. Her car had slowed down when passing groups of people who had assembled at various points on her journey from Abingdon.

On leaving her car, the Queen was met by the Mayor, Councillor J O Johnson, who welcomed her to the Town. The Mayor then presented his wife, the High Steward of Wallingford Lord Glynn, the Town Clerk Mr J Fisher and the Aldermen of the Borough. After inspecting the Guard of Honour and Queen's Colour Party, she was presented with a bouquet of carnations and freesias by Pamela Iles.

The Queen, preceded by the Sergeant-at-Mace, was led to the Town Hall and out on to the balcony. The Mayor then read the Royal address, the Queen replied and then released the Union Jack which covered the bronze plaque commemorating the 800th anniversary of the town's charter, granted in 1155. On leaving the balcony, the Town Councillors and representatives of local organisations were presented to her. She was shown a number of historical documents and a scrapbook of the charter celebrations of the previous year. Prior to leaving she was presented with an etching of the Town Hall, drawn by Mr G Ashworth.

Accompanied by loud cheering, she left the town and proceeded through Crowmarsh to Howbery Park, where a large crowd had gathered by the main gates. The Director of the Hydraulics Research Station, Sir Claude Inglis, showed her around the Main Hall (Reynolds Building), and she was shown a model of Tamar Harbour, the River Trent and Karnafuli River, East Pakistan.

The fourth and final engagement of the day was an inspection of the Queen's Flight at RAF Benson.

In the evening at Wallingford there was a torchlight parade and bonfire on the Kine Croft, followed by a firework display. A gala dance was later held in the Masonic Hall to round off the day.

Although I worked in Reading, I was given the day off so I could witness the Royal visit.

Can Lions and Humans Co-exist?

Amy Dickman of the Department of Zoology at the University of Oxford will try to answer this question in her talk to Science Exchange Wallingford on the subject of Human – Wildlife Interaction

The death of Cecil the lion in 2015 is just one example of the challenging relationship between man and the natural world. As a conservation biologist, Dr Dickman seeks to understand what drives conflict between large carnivores and humans so that these issues can be resolved.

Amy Dickman has worked with lions in Africa for many years. She is a member of the IUCN Cat Specialist Group, the African Lion Working Group and has established the Ruaha Carnivore Project in Southern Tanzania. Dr Dickman has a great deal of practical experience working with big cats and will describe her research into the maintenance of threatened wildlife populations, such as lions, in human dominated landscapes.

Science Exchange Wallingford's next meeting is at 7.30pm on Tuesday 10th May in Wallingford School Library, St George's Road, Wallingford. Meetings are very informal. Speakers talk for about half an hour, then we break for refreshments and return for a lively question and answer session. We are grateful that the support of local company Triaster, Wallingford School and the generosity of our speakers ensures that each event is free to attend. We are also privileged to be a Café Scientifique. (<http://www.cafescientifique.org/>).

Short Mat Bowls

takes place at the Pavilion on Tuesdays at 7pm and on Thursdays at 2pm. For more information, please call 837518.

Useful telephone numbers

Crime Stoppers 0800 555 111

Police non-emergency number 101



There's never been a better time for your child to join Cranford House

- **'Outstanding'** in Early Years, ISI Inspection, November 2014
- **Excellent Nursery** offering fantastic outside space, Forest School & Swimming lessons - limited places available
- **Co-educational Junior School** (boys and girls 3-11 years)
- **New Sixth Form** adding to our all-girls senior school

At Cranford House, we specialise in academic excellence in a non-selective environment, outstanding pastoral care and superb extra-curricular opportunities for all.



CRANFORD HOUSE

Excellence in Independent Education

Boys & girls 3-11, girls 11-16 years

www.cranfordhouse.net

01491 651218

LAWNCARE

**GARDEN MACHINERY
SALES, SERVICE & SPARES**

LODGE FARM
OLD READING ROAD
CROWMARSH
WALLINGFORD
OXON OX10 8BW

Agents for:
*Mountfield ~ Westwood ~ Echo
& many others*
Briggs & Stratton service centre
TEL 01491 836060



Wittenham Dog Grooming Studio

Catering for all your dog's grooming requirements by someone who loves dogs and is C&G qualified. Puppies very welcome as an introduction to grooming in a safe, secure environment.

Weekdays, Evening & Saturday appointments available.

Please Contact Gayle Ready on
07814 228868 or
www.wittenhamdoggrooming.studio



Cartoon event for children

Experience a special 'Night at the Museum' at Wallingford Museum between 6pm – curfew (9pm) on Friday 13th May.

Following the great successes of previous years' events, this year's 'Night at the Museum' will be a bookable 'Cartoon' event for children featuring Steve Head and his cartoon exhibition plus a chance for children to be creative and draw their own cartoons inspired by Museum items. Local artists will be on hand to help. The evening is kindly sponsored by Goring Decorative and Fine Arts Society (GADFAS). There are limited places for children, and although the event is free, there will be a small fee for materials.

For further details and booking, please contact Judy Dewey, 651127, preferably before 5th May!

www.wallingfordmuseum.org.uk

Judy Dewey

Artweeks Festival at Cornerstone, Didcot

As part of this year's Artweeks Festival, Cornerstone Arts Centre in Didcot are hosting "Drop In and Draw" sessions organised by the 'Life@Cornerstone' group, who have an exhibition of drawings from 14th to 21st May.

Life@Cornerstone will provide drawing materials and a clothed model and offer you encouragement rather than tuition. No experience is necessary, the sessions are open to anyone and you can stay for as long as you like.

Come along and have a go on the afternoons of Tuesday 17th and Saturday 21st.

Take a look at the Artweeks website for details of this and other events throughout Oxfordshire: www.artweeks.org



The Westgate excavations

This month, Ben Ford returns to The Wallingford Historical and Archaeological Society (TWHAS) with a talk describing the archaeological work currently being undertaken as part of the Westgate centre re-development in Oxford.

Ben Ford is from Oxford Archeology and is Project Director for the excavations at the Greyfriars site under the former Westgate car park and shopping centre. He will talk about the excavations carried out in advance of the redevelopment of the site by Westgate Oxford and Laing O'Rourke. This is the largest ever archaeological site in Oxford and has yielded a rich array of finds, including a medieval mill on the Trill Stream.

This talk will be held on Wednesday 11th May, 7.45 for 8pm, at St Mary's Church, Wallingford. Please note that TWHAS talks are now being held on the second Wednesday of each month at St. Mary's Church, Wallingford.

Visitors (£4) are most welcome. For more details of TWHAS and its activities, please visit www.twhas.org.uk

Sue Ryder – Sale Dates

The date for the next Sales of Donated Goods are Saturdays 14th May, and 4th & 25th June. The sales will run from 10.30am to 12.30pm.

Saleable donated goods are welcomed on week days between 9am and 4.30pm, but we are unable to accept goods on Sale Day or the day before.

Volunteers are always needed to select and allocate donated goods and to assist with Sales. The Sue Ryder Nettlebed Hospice is at Henley on Thames, RG9 5DF.

For further details of these sales, please call 01491 641384 ext 246.

Warmingham

www.warmingham.com

Opening new doors for you



Warmingham & Co - Your local professional family run Estate Agents & Valuers.

Having been established for over 30 years, you can be assured of a professional and thorough approach from our highly qualified and experienced personable staff who, both understand the current market place and yield extensive local knowledge.

Offering our clients the most effective, cohesive and progressive marketing package tailor-made to their own individual requirements, locally, nationally, and internationally, we are here to make your next move both seamless, and the right one for you.

Call us **7 Days A Week** for a **Free Valuation** on **01491 874144**

Or visit

www.warmingham.com

Office Opening Hours: Monday - Saturday: 08:30 - 18:30 - Sunday: 10:00 - 16:00

Website Opening Hours: 24 Hours A Day - 7 Days A Week - 365 Days A Year

Sales & Valuations

T 01491 874144

E sales@warmingham.com

4-5 High Street
Goring on Thames
Oxfordshire

RG8 9AT

Residential Lettings

T 01491 875011

E lettings@warmingham.com

Tom Cottrell Landscapes

Est 1974 Family Run Business

Telephone: 01491-836974

All tree aspects - David Cottrell

Felling, Reducing, Reshaping
Thinning, Removal, Pollarding
Shrub & Tree Pruning
Dead Wood Removal
Hedge Management
Stump Grinding

Garden & Landscaping Services

Turfing, Hedge & Grass Cutting, Planting
Fencing, Patios
General Garden Maintenance
Garden Renovation & Construction
Woodchip Mulch
Seasoned Logs & Kindling Wood

Web: www.tomcottrelllandscapes.com

Email: tomcottrelllandscapes@gmail.com

Orchard Cottage, High Road, Brightwell-cum-Sotwell, Nr Wallingford, Oxon OX10 0PS

www.RefreshPro.co.uk



Exterior Excellence - Specialist Cleaning

* Patio/Drive Cleaning * Gutter/Facia Cleaning

* Reach & Wash Pure Water window cleaning

Pictures speaks for more than words, please see our gallery at www.refreshpro.co.uk

We are a reliable, local family business based in Crowmarsh providing a professional service to Oxfordshire and the surrounding areas.

*Domestic & Commercial *Free quotes on all services *Full public liability insurance

Tel: 01491 833937 Mobile: Kevin 07772416465 Email: info@refreshpro.co.uk

DON'T BUY IT - HIRE IT!

• PLANT & TOOL HIRE • TRADE & DIY •

We are the hire specialists and stock all your needs - from hand tools to forklift trucks

Service second to none. Competitive prices.

Delivery and collection service.

Open: Mon.-Fri. 7.30am - 5pm Saturday 7.30am - 12 noon

PARKING A PLEASURE!

DIDCOT PLANT

Didcot Plant Ltd, Basil Hill Road, Didcot

01235 814000

www.didcotplant.co.uk

PC DRIVE WALLINGFORD

LEARN TO DRIVE

Fully qualified, DSA approved instructor.

Local, calm, friendly and professional tuition.

Pre-test to post-test courses.

Pass Plus registered.

Dual controls.

Air conditioning.

PETER COSFORD (ADI)

OFFICE: 01491 825091

MOBILE: 07989 352325



Performanze.co.uk

More info

Call Rosie: 07745 099472

Email: performanze@live.co.uk

Ballet Tap Modern Street Jazz Drama

RR
FORRESTERS

Look good...
feel good

Forresters Wallingford has built its reputation as a centre of excellence and showcase for cuts and colour.

For more information about offers and promotions or to book a FREE consultation, contact us today.



01491 837 523 Forresters4Hair.com

Find us at: 25 High Street, Wallingford. OX10 0BU

You can
now book
online

Wallingford U3A

This summer we will be celebrating our 39th Anniversary. We have an ever more exciting programme of talks, outings and activities, and would be happy to welcome visitors to come and join us.

In April we enjoyed our second talk, "St Helena, Saints and Jacob's Ladder" by Mrs Jill Carey. This time she was sharing her recent visit to St Helena. It was well illustrated with photographs of the landscape and some of its unique fauna and flora and we learnt that St Helena's isolation as a volcanic island, only ten miles long and six wide on the Mid-Atlantic Ridge, led to its evolution being uninfluenced by external factors.

Best known are the turtles. One, Jonathan, is known to be 150 years old. There are also the blushing snails, the Wyre bird and the sooty tern, among others. Tree ferns, 'he and she' cabbages and the gunwood tree are among the unique plants, some of which are currently the subject of research for medical possibilities.

The 4200 inhabitants of St Helena, known as The Saints, is made up of descendants of Africans, Madagascans, Chinese brought in for road building and of prisoners from the Boer Wars, as well as some British ancestors.

There are only two bays suitable for harbours. Both have steep narrow valleys, 'guts', leading down to them. Jamestown, the capital, is linked to the upper town by Jacob's Ladder, a 699 step staircase that rises almost vertically from the head of the gut. There are also roads giving access to the green heart of the island. Currently the only access to the island is by sea. An airport opens this summer - a new tourist destination? What might Napoleon have thought?

Upcoming talks:

- 4th May: Mrs Valerie Calderbank will talk on Myths and Legends of the Stars
- 1st June: Tony King, Hollywood to Broadway by Train

Our Meetings are held at 2pm on the first

Wednesday of each month at Crowmarsh Village Hall. Visitors are welcome to join us for the talk, then tea and a chat afterwards. On 17th May we are organising an outing to Canons Ashby House near Daventry. This is a lovely Tudor manor house with interesting gardens. It is National Trust, so the cafe will be good!

For more information about outings, phone Eileen on 825156. To find our website, Google: u3awallingford, where you can find more information, photographs and contacts. If you would like to speak to someone about our many interest groups and activities, please phone Hermione on 01865 858024; or Jill on 835994.

Henley Philatelic Society

If you collect anything to do with the post, come and visit us one meeting. You will be surprised at the different subjects covered in the displays from pre-stamp covers, to modern stamps, postcards, and other items, that this excellent and wide ranging hobby embraces. And there is time for tea and a chat.

Wednesday 11th May – An evening of Post-cards

Wednesday 25th May – AGM and members bring five favourite pages from their collections

Meetings are usually held on the 2nd and 4th Wednesdays of the month at Bix Village Hall at 7.45pm from September to June inclusive. Visitors and new members are welcome. Details from 681739 or on our website: www.henleyphilatelic.co.uk

Handbell Concert

Gay and Alan, who have been seen ringing for Christmas in Wallingford Market Place and who played the handbells on *Britain's Got Talent* (remember "Titanic"?), will be joined by their friends from The Launton Handbell Ringers, who have played the traditional way since 1951, for an exceptional concert of handbell ringing on Saturday 21st May at 4pm at Benson Parish Hall.

Tickets £2.50 on the door. All welcome! Details ajc@hrwallingford.com or 07964 615428.

ALLAWAY AUTO ENGINEERS

Approved M.O.T. Test Station



Now carry out pre-booked M.O.T.'s for Motor Cycles while you wait.
Servicing and repairs for Cars, and Motor Cycles
Tyres supplied and fitted.

Open Mon - Fri 8.30am-5.30pm

Saturday 9am-1pm

Unit D Whiteley Road
Hithercroft Industrial Estate

Wallingford

Tel: 01491 833116

ODD JOB MAN

Offering completion of the following works to the highest standard

*Fencing *Decking * Driveways *Patios *Garden Maintenance

LOGS FOR SALE (including kindling wood)

I also collect ALL scrap metal including cars, washing machines, tumble driers and all other scrap metal

As well as these services, I offer removals, house clearances and rubbish removal. I will also happily remove all garden waste including trees and wood. Tree wood is removed free of charge based on the amount and where the customer is based.

For more information or a free quotation please call Nick on 07928775767 or 01189761460

ROOM SERVICE

Your Local Friendly Cleaning Company

Providing an excellent, professional service to homes and offices in your area. Daily, weekly, or whenever you need help.

Ginny

07976 883165

roomservices@btinternet.com



Free to use ATM

**At Howbery Park
in The Manor House**

**Come and Visit our Deli Bar/
Coffee Lounge and try our
NEW real coffee machine**

- Freshly made baguettes **(available 11am – 2pm)**
- Small selection of homemade cakes
- Friendly welcoming staff
- Beautiful surroundings
- Conference room hire available
- Free wi-fi
- Ample Parking

**Open Monday – Friday
8.30am – 4.00pm**

Visit us, or call 822495 for more information.

www.howberypark.com



**HOMEbase
MANAGEMENT**



EXCLUSIVELY LETTINGS - Established 1989

We are an independent company and offer exceptional service and exceptional care providing the highest standard of service to Landlords and Tenants.

We are ARLA trained, very experienced, friendly and informative; dedicated in caring for your property whether you are living overseas or closer to your property.

If you are thinking of renting your property, call us now.

LET WITH CONFIDENCE - 01491 824470

Ground Floor, 16b St Mary's Street, Wallingford OX10 0EW
email: hpm@clara.co.uk www.homebasepropertymanagement.co.uk

COULTON

Plumbing & Heating

A local family business, based in Crowmarsh Gifford, providing a professional and quality service

Boiler Servicing, Repairs & Maintenance

Boiler Replacements • Heating Repairs

Landlord Safety Certificates

General Plumbing Maintenance & Repairs

Heating System Installation

Cylinder Repair & Replacement

Specialists in OIL & GAS

T 01491 824486 M 07737 788773

coultonplumbing@hotmail.com

Proud members of
Checkatrade.com
Where reputation matters



For **ALL** your printing needs:
Business Cards • Letterheads
Comp Slips • Invoices
Leaflets • Magazines/Journals
Corporate & Wedding Stationery
b/w or full colour - no job too small
for FREE quotation
(01491) 836282 or
Email: print@albry.co.uk

UNIT 2, ROCKFORT ESTATE,
HITHERCROFT ROAD, WALLINGFORD, OXON. OX10 9DA

NEW COLOUR COPYING FACILITY

Carpet & hard floor care

Vacuum cleaners, bags, filters, spares & repairs

Carpet cleaning machines, shampoos & deodorisers

Rotary floor polishers, pads, wax & polish. Scrubber-driers

 **CLEAN MACHINE Hire & Sales**

01491 825600 www.machineshatclean.com

St. Peter's Street Shops, Wallingford, OX10 0BG (behind Champions)



**UNIQUE
PLANTED BASKETS
& CONTAINERS**

*250 varieties
& colours of basket
and patio plants
all grown
on the nursery*

Summer Bedding • Veg Plants + much more...

01491 833831

Seasonal Openings: April to July • September & October • 7 Days a week 10am - 5pm
142a Wantage Road • Wallingford • OX10 0LU

www.busbaskets.co.uk

Roy Windebank Auto Engineers Est 1983

Roy Windebank and his team of trained mechanics provide professional car servicing & repairs.

**SERVICING, CLUTCHES, BRAKES,
EXHAUSTS, DIAGNOSTICS, MOT'S,
TYRES, BATTERIES AND ALL REPAIRS.**

01491 652345

**Kentwood Farm, Papist Way,
Cholsey OX10 9LJ**

<http://roywindebank.co.uk>



Scott Gesner

08718 244787

gesnergardening@yahoo.co.uk

www.gesnergardening.co.uk

*Contact us for a free
quotation*

To book North Stoke Village Hall

contact Nikki Arnfeld
(839736, 07969 788766, or
narnfeld@yahoo.co.uk)
or Stuart Soames
(836058, or
sjwsoames@btinternet.com)



St Mary Magdalene's Church Crowmarsh Gifford

Team Vicar: The Rev'd Kevin Beer
34 Thames Mead
Crowmarsh Gifford. OX10 8EY
Tel: 01491 599873

Email: teamvicar@wallingfordcofe.org.uk
Churchwardens:

Margaret Foster, tel: 836076
Eva Thompson, tel: 201675

Services for May

Sunday 1st	Easter .6.	11am	Parish Communion
		4pm	Evening Prayer, Newnham Church
Sunday 8th	Easter .7.	11am	All Age Worship
Sunday 15th	Whit Sunday	11am	Parish Communion
Sunday 22nd	Trinity Sunday	11am	All Age Communion
Sunday 29th	Trinity .1.	11am	Parish Communion

Easter is now long gone and what a cold one we had! Our Sunrise Service at 6.30am was a rather damp and windy affair, and so now we are looking forward to more pleasant weather.

We had the pleasure of welcoming our New Team Vicar on the 27th April, and we hope that Kevin now feels welcome and part of our community, and that we shall see him and his wife Lesley-Ann out and about in the Village. Please note that the telephone number for the Vicarage has changed; although Kevin has said that his preferred point of contact will be by email.

We had our APCM in April, and can inform you that the new churchwardens are the same as last year – see above for our names. We had 17 people attending, and a copy of the adopted Report is available from me on request.

There has been some comment around the village concerning what form our celebration should be for the Queen's 90th Birthday. At the Parish Council Meeting, it was suggested that our Flower Festival and Fete would form a good base line for this village to mark the celebration. Bearing this in mind, our Flower Festival theme will be 'Celebration' – the display can be for any form of celebration you might think of, a birthday, a sports win, a Saints Day, the ideas are endless. If you would like to celebrate and make a flower display in church this year, then please let me know, and we can make arrangements to meet up and discuss what you would like to do. If you would

like to help out with the Fete side of things, then please make contact with Sarah Nesbit (825903), whom I am sure would appreciate your call.

The Flower Festival and Fete falls on the same weekend as the Party for the Queen, the 11th and 12th June.

On Sunday 1st May we shall have the first of our Evening Prayer Services in Newnham Church. Do come along and join with us in a very simple service of quiet and contemplation, which is just so perfect for that small church.

We have two special celebrations this month, Ascension Day on 5th May, which is the day that Jesus our Lord went back to his Father in heaven witnessed by some of the Disciples. And Whit Sunday – the day of Pentecost – when the promised Holy Spirit was sent down to the Disciples, and which has come down to us through the generations. These are events to shout about, as this is when we the ordinary people were given the freedom to speak to God for ourselves, and not through intermediaries and special processes. The Church as we know it started at this time, by people talking to others about our Lord, and the Good News which he had given us. Let us all endeavour to continue with the process started all that time ago.

Blessings
Margaret Foster
Churchwarden



South African Plants – in the wild and in your garden

At the May meeting of the Wallingford Gardening Club, Sue Bedwell will talk about 'South African Plants in the Wild and in your Garden'. This is the last talk of the spring season before our series of summer garden visits commence.

Sue Bedwell trained and taught at the prestigious Waterperry Gardens. She now runs a nursery from home and opens her garden to the public. Based upon several visits to South Africa and a long gardening experience, Sue will talk about South African plants both for the garden and indoors. She will bring plants for sale on the evening!

The talk will be held at Ridgeway Community Church, Wallingford at 7.30pm on Thursday 12th May. Visitors very welcome £2.

Saturday 14th May - Wallingford Gardening Club's Annual Plant Sale in Wallingford Market Place.

Isabelle Darby
836867

Wallingford Photographic Club

Wallingford Photographic Club meets on Thursday evenings at Crowmarsh Pavilion. The club is always pleased to welcome visitors (£3 for the evening) and new members, from beginners to advanced photographers. If there is something which interests you in the club programme, why not come along as a visitor and find out more about the club? Full details can be found at www.wallingfordphoto.club

May's programme:

- 5th Lesson in Macro
Speaker: Bob Brind-Surch.
- 12th Annual Competitions
Judge: Mark Buckley Sharp.
- 19th Annual General Meeting.

Didcot and Wallingford Ramblers Walks for May

Thursday 5th

10:00 SU599936 Moderate 7 miles

Meet at the church at Warborough for a mainly level walk around Warborough, Berrick Salome and Newington. Registered Assistance Dogs only.

Contact Nuala Clements on 835387.

Sunday 8th

14:00 SU526882 Moderate 6 miles

Meet at East Hagbourne at Upper Cross, near the church. This is a monthly village ramble that varies from 5 to 7 miles.

Contact Paul Chambers on 01235 816365.

Tuesday 10th

10:00 SU614915 Moderate 7.5 miles

Meet at the junction of Church Road and St Helens Avenue, Benson for a circular walk via Little Wittenham Woods and Warborough.

Registered Assistance Dogs only.

Contact Barry Cowlard on 838707.

Tuesday 17th

10:00 SU719887 Moderate 7 miles

Meet by big bend at Maidensgrove Common for a circular walk via Greenfield Wood and Hollandridge Farm.

Contact John Rust on 01491 836563.

Tuesday 24th

10:00 SU702868 Moderate 7 miles

Meet at the Old Kiln, Nettlebed for a circular walk via Halfridge Wood, Warburg Nature Reserve and Park Corner.

Contact Richard Birch on 07719 692355.

Summer sports successes

Do you run a sports team or sports club in Crowmarsh Gifford?

If you do, please let the *Crowmarsh News* know about your successes this summer (or even your failures if necessary). By telling us about what you're doing, you will bring it to the attention of others who may be interested in joining in.

Pictures are always welcome, too.

Crowmarsh Parish Council News

Chairman: John Griffin, 29 Thames Mead, Crowmarsh Gifford, tel. 838523,
email: johngriffin@phonecoop.coop
Parish Clerk: Sue Rance, 2 Home Farm, Crowmarsh Gifford
Website: <http://www.crowmarshgifford.org.uk/index.php>

Notes of the Parish Council Meeting held at Crowmarsh Gifford Village Hall on Thursday 7th April 2016

Present: Councillors John Griffin (Chair), Nigel Hannigan, Andrew Johnson, Francesca Jones, David Mannering, Stephen Sherbourne, Fleur Stevenson and Stuart Soames; Sue Rance (Clerk) and Ms C M Malcolm (Finance Officer). Mrs Sarah Nesbitt attended part of the meeting.

Apologies: Councillors Andrew Hermesen and Ann Sharp

Resignation

We are sorry that Mrs Mo Fillmore has decided to resign from the Parish Council because of her other commitments, but we are grateful for her contribution and what she continues to do in the community.

There are now two vacancies. If you think you might like to join the Parish Council, please talk to the chairman, clerk or any councillor.

Matters from minutes of previous meeting

Correction to previous minutes: Mongewell are planning a picnic to celebrate the Queen's 90th birthday on Saturday 11th June and North Stoke are arranging a street party on Sunday 12th June (not vice versa as previously recorded).

The owners of the camper vans parked on The Street had contacted the Parish Council. No further action can be taken on this matter.

SODC has advised that the contract for emptying the dog waste bins will continue.

Bus Stop at North Stoke: Cllr Soames reported that the entrance to the southbound bus stop had been concreted but the northbound stop still needs repair urgently. This was a mistake by the contractor so we will not be charged.

The Finance Officer will research the costs and procedures involved in the process of transferring allotment land and will report back. Cllrs Griffin and Sherbourne will arrange to speak to the resident who made the request.

Queen's Birthday Celebrations: Mrs Sarah Nesbitt reported that the Church Flower Festival and Fete, their main annual fund-raising event, will take place on 11th and 12th June on the theme 'Celebration'. Activities will be on the Royal theme but the flower arrangements may represent any form of celebration. The festival will run from 10am to 6pm on Saturday and 12 to 6pm on Sunday, followed by Songs of Praise.

The parish council is keen to support the Church events rather than competing with them when considering any other event in Crowmarsh Gifford. A grant of £672 is available to the parish for community events for the Queen's birthday. Cllr Soames will claim for the North Stoke and Mongewell events. Mrs Nesbitt will ask Mrs Hannigan if there are any plans for another event in Crowmarsh.

Fencing at Bridge Villa Campsite: new fencing will be erected and the barbed wire removed.

Finance

A schedule of payments made in March was agreed. Although the accounts had not yet been finalised, the year-end position showed an under-spend of £13,840. Receipts are on target and payments are underspent. There has been no capital expenditure during the year.

Grass cutting contract for 2016: it was agreed to continue with Scofell for another year. Scofell's contract price had increased by £560 for this year but does include some areas that had been omitted last year. The Parish Council receives a grant from the County Council towards the cost of some grass cutting, mainly verges.

Cllr Mannering offered to assist the council's accounting controls by carrying out a regular check of invoices against cheques.

The Parish Council's publications scheme was reviewed and approved. We will post the annual financial return and auditor's report on the website as well as the agendas and minutes of Parish Council meetings.

Councillors are looking in detail at a list of suggested capital projects in preparation for deciding which of them should have priority. Cllr Johnson would re-circulate the extended list for discussion. £40,000 of the money held in reserve for such projects would be transferred to the savings account for the time being.

Requests for grants and donations

A donation of £200 was agreed to the Nasio Trust to enable four local young people to go to Kenya to help carry out development work.

North Stoke Village Hall will be given a grant of £760 to mow the grass and cut the hedge at North Stoke Village Hall and mow the grass at the crossroads. £945 will be given to North Stoke PCC to mow the grass in the churchyard and the pound.

Allotment charges would remain the same, but it was agreed to review these before April 2017. We will review the electricity supply contract at the next meeting.

Annual Parish Meeting

The Annual Parish Meeting for all electors will take place on Thursday 19th May at Crowmarsh School, starting at 7.30pm. Representatives of the Environment Agency, Thames Water and SODC will to be invited as well as county and district councillors and the police. The Clerk will arrange for light refreshments to be provided.

Planning

SODC decisions:

P15/S4207/HH (Householder): First-floor loft room extension and single storey kitchen extension to front elevation (amended to

reduce the scale). Withy Windle, Cook Lane, North Stoke, OX10 6BG.
PERMISSION GRANTED.

P11/W2357 & P11/W2358/LB (Listed Building): Redevelopment to provide 166 residential dwellings (C3), refurbishment of Grade II and Grade II listed buildings, including a restaurant/community cafe and swimming pool and retention of boating facilities and associated landscaping, access and parking arrangements (as amplified and amended and further clarified by report and plans in relation to an alternative access from WSP dated 6th June 2014). Former Carmel College, Mongewell Park, Mongewell OX10 8BU.
PERMISSION GRANTED.

P13/S2469/FUL & P13/S2470/LB: Demolition of existing Grade II Listed northern gate pier at the entrance to Carmel College and re-build 1.5 metres north of existing location, and shorten the flanking wall. Additional quooin stones to north corner of wall (as amended by revised details and amended drawing). Former Carmel College, Mongewell Park, Mongewell, OX10 8BU.
PERMISSION GRANTED.

P16/S0216/FUL & P16/S0217/LB: Change of use from domestic dwelling to office. General refurbishment to interior. The Lodge, Howbery Park, Benson Lane, Crowmarsh Gifford, OX10 8BD.
PERMISSION GRANTED.

P16/S0568/HH: The addition of a high level rooflight on the north elevation, as previous granted application P14/S3445/HH. The Walled Garden, The Street, Crowmarsh Gifford, OX10 8EJ.
PERMISSION GRANTED.

P16/S0645/FUL: Office extension to western elevation. Jewson Limited, The Street, Crowmarsh Gifford, OX10 8ET.
PERMISSION GRANTED.

Parish Council responses to SODC:

P16/S0844/HH: Single storey side and rear extension (permission previously granted under P15/S3211/HH). 14 Benson Lane, Crowmarsh Gifford, OX10 8ED.
RECOMMEND APPROVAL.

P16/S0854/FUL: Construction of a new building for housing new boiler system and all associated pipework and equipment. Scotia Gas Above Ground Installation off the A4074, Ipsden (in the parish of Crowmarsh).
RECOMMEND APPROVAL.

Community Infrastructure Levy (CIL)

The Community Infrastructure Levy (CIL) came into force on 1st April 2016 as a levy on most new developments that are granted planning permission to raise funds for infrastructure necessary to support development in the district. In South Oxfordshire the levy will apply to new residential development, supermarkets and retail warehouses. SODC will still use Section 106 legal agreements to secure affordable housing and for improvements to infrastructure that are directly related to the development of a site.

Town and parish councils are entitled to 15% of the CIL funds received where development has taken place within their boundaries, up to a limit depending on their size. This rises to 25% where a Neighbourhood Plan has been adopted, which does not apply to Crowmarsh.

Environment and Recreation Ground Committee

Cllr Johnson reported that the recreation ground income and expenditure (excluding money spent on the nature area) are now in balance. One more quote is needed for a basketball half court, and quotes are being obtained to improve parts of the path through and around the nature area, which have become very muddy. The cheapest option is to lay drains across the muddiest areas and it was agreed to try this first.

A resident had raised concerns about potential parking problems at Stephen's Field. The road to the Riverside Park had not yet been opened and it was noted that the pavement had not been extended all the way. Croudace was managing the green public open spaces on the development for the first five years, after which responsibility for them will be handed over to the Parish Council.

The next meeting of the Environment and Recreation Ground Committee is on Monday

9th May in the pavilion.

Traffic and Transport Committee

The 134 GoRide bus service from Wallingford through North and South Stoke to Goring will continue with a reduced hourly timetable and higher fares from the end of July. GoRide will publish details in *Crowmarsh News* in June or July.

Traffic calming measures on the A4074 Portway were being explored, including a pedestrian crossing, and a potential contractor is interested. Cllr Sherbourne will obtain an estimate for carrying out a technical assessment.

Correspondence

The Chairman and Clerk had received invitations to RAF Benson's annual reception on Thursday 19th May, which coincides with the Annual Parish Meeting. Cllrs Johnson and Sherbourne will represent the council at RAF Benson this year.

Website

Cllr Stevenson reported that the website had been the victim of a hacking attack and a temporary website had had to be set up quickly. Considerable work would be needed to restore all the information that had been lost: current information about councillors and events would be posted as a priority.

District Councillor's report

District Councillor Pullen had submitted a report. The following points were noted (more details are on the SODC website):

- A consultation is taking place on the district councils' proposal for devolution of local government (visit <http://www.oxfordshire.vision>)
- District Council officers work closely with colleagues in the other local councils on the Community Safety Partnership.
- The Oxford Multi Agency Support Hub (MASH) helps to prevent abuse of vulnerable people and shares incidents of criminal activity and exploitation.
- Planning: the appeal for the Wates

development in Winterbrook, Wallingford was upheld at appeal, after SODC refused it.

- The "Clean For the Queen" litter collections in March collected four tons of rubbish and one ton of recycling from the South and Vale districts.

Any other business

Cllr Sherbourne was thanked for planting the flower tubs at the roundabout, which greatly enhance the street scene.

All residents are encouraged to help maintain the cleanliness of our local environment if you are able, keeping the frontage of your property tidy, clearing up litter and reporting damage and fly-tipping.

Next meeting

The next parish council meeting will be on Thursday 12th May at North Stoke Village Hall, starting at 7.30pm. All welcome.

The Annual Parish Meeting for all residents will be held on Thursday 19th May at Crowmarsh Gifford CE Primary School, starting at 7.30pm. Please come and discuss any issues relating to local government and public services in the parish.

Wallingford and District Stroke Club

Wallingford and District Stroke Club meets on the fourth Thursday of each month at Crowmarsh Village Hall for activities and companionship, tea and cake. In the summer months we arrange outings, both locally and further afield, using the Wallingford Coach with its accessible platform.

We'd love to welcome more members (fees are very reasonable at £2 per month). If you, or someone you know, would like to join us – or just give us a try – please contact Norman Goodall on 01235 834503 or Jenny Tatman on 01491 839499 and we'll be pleased to talk to you.

Pictures, logos and display ads for the Crowmarsh News...

...are best in .jpg or .pdf format.

Stoke Row Covered Market

The Stoke Row covered market is held on the third Saturday of every month from 10-2pm at Stoke Row Village Hall RG9 5QL.

We have a café selling hot food and beverages. All proceeds from the market go towards the fabric fund (repairs to building and churchyard) for Nuffield Church.

We are a very small congregation trying to keep our wonderful old church going but are increasingly struggling to do any repairs. We really need the support of the local villages in order to keep God's house alive and available for use, be it for weddings, christenings, funerals or of course for worship.

Please come and support us.

For further information, call:

Sue Woodley on 07782187866, or
Mary Edwards on 641434



Bowls for the over 60s

Go Active Gold is a project funded by Sport England to support the over 60s living in smaller rural villages by increasing physical activity levels.

It will be organising Bowls for the over 60s at Hagbourne Bowls Club (OX11 9LS) this summer, beginning on 1 June 2016.

For more information or to book into a session, please get in touch with Conor Grogan, either by calling 07717 326660 or by email to Conor.Grogan@southandvale.gov.uk

Sports Facilities for Hire

You can hire the Dance Studio, Sports Hall or the Astroturf at Wallingford School.

Call Emma Freeman on 829762, or e-mail FREEMANE@wallingfordschool.com

DIRTY CARPETS, UPHOLSTERY, RUGS



Most carpets dry within the hour

Unbeatable results, removes almost all spots & stains

call

GRIMEBUSTERS

01865 726983 01235 555533

www.grimebusters.co.uk

THOMAS MERRIFIELD

Surveyors • Auctioneers • Estate Agents

72 High Street, Wallingford, Oxon. OX10 0BX

Tel: 01491 - 833833 Fax: 01491 - 833055

email: wallingford@thomasmerrifield.co.uk

www.thomasmerrifield.co.uk

Crowmarsh Gifford Village Hall is ideal for children's parties and can be booked for £10.00 per hour (minimum 2 hours).

Please note that bouncy castles or other inflatables cannot be used inside the Hall, and that evening bookings from 7.00pm are subject to the full rate.

To book the Hall, call Chris Strange on 07711 904252, or e-mail cvhbookings@gmail.com.



CLEANER, GREENER OVEN CLEANING

Ovens | Hobs | Microwaves | Extractors | BBQs

WE PUT THE SHINE BACK INTO THE INSIDE AND OUTSIDE OF YOUR OVEN!

T. 01491 837420 E. info@proovencleaning.co.uk

www.proovencleaning.co.uk

GORING & STREATLEY CLINIC

trained to fight

PAIN



The Community Centre
Station Road, Goring

For treatment of
Ligaments & Muscles
Rheumatism & Arthritis
Sciatica
Backache
Lumbago
Joint Pains
Sports Injuries
Headaches & Stress

01491 873 874
or out of hours
07775 714 300

Natalia Beddoe BSc(Hons)Ost
Registered Osteopath
Victoria Swan MAO
Registered Osteomyologist

Early Days Nursery

Encouraging children's natural curiosity
The Old School, Ipsden, Wallingford

- Independent Nursery est. 1992
- Children from 5 months to 5 years
- Set in countryside with fields and woodland to explore
- Holiday club up to 11 years offering multi-activities and days out
- Flexible sessions within 7.15am-6.15pm
- Giving your child the best start for school

To book a visit or holiday club contact Sandy:
(01491) 681101 or enquiries@earlydays-nursery.co.uk

www.earlydays-nursery.co.uk



PJWITNEY ELECTRICAL CONTRACTORS LTD

REGISTERED MEMBER



Installation & Repair
Test & inspection
Free estimates

Over 20 years of quality workmanship

Phone Fax 01491 837939

Mobile 07740981597

Email peter.witney@sky.com

THAMES SALON
THAMES SALON
THAMES SALON
THAMES SALON

Gents Hairdressing
Est. 1958

21 St. Mary's Street, Wallingford
Oxfordshire OX10 0EW

Telephone : 01491 837124

OPENING HOURS

MONDAY	8.30 am - 6.00 pm
TUESDAY	8.30 am - 6.00 pm
WEDNESDAY	Closed
THURSDAY	8.30 am - 9.00 pm
FRIDAY	8.30 am - 9.00 pm
SATURDAY	8.00 am - 6.00 pm

www.thamessalon.com

WHAT'S ON – MAY 2016

Regular events and meetings

1st & 3rd Mon	19.00	Knitting Circle	Queen's Head, Crowmarsh
Every Tuesday	19.00-21.30	Short Mat Bowls	Crowmarsh Pavilion
2nd & 4th Weds	Evenings	Crowmarsh Ladies	Telephone 201756
Every Thursday	14.00-16.30	Short Mat Bowls	Crowmarsh Pavilion
Every Thursday	19.45-22.00	Wallingford Photographic Club	Crowmarsh Pavilion
Every Friday	08.30-11.15	Wallingford Country Market	Regal Centre
Every Saturday	10.00-12.00	WAGS Store open	Centre 70
Most Saturdays	10.00-13.00	Local Producers' Market	Regal Centre

This month

Sunday 1st and Monday 2nd	All Day	Railway Bank Holiday Specials	Cholsey and Wallingford Railway
Sunday 1st	13.30	CTC 24-mile road ride	Meet Wallingford Market Place
Wednesday 4th	14.00	U3A: Myths and Legends of the Stars	Crowmarsh Village Hall
Thursday 5th	0700-2200	Police & Crime Commissioner Elections	Crowmarsh and North Stoke Village Halls
Saturday 8th	11.00	Vehicle Rally and Parade	Kinecroft and town
Tuesday 10th	19.30	Science Exchange: Can lions and humans co-exist?	Wallingford School Library
Wednesday 11th	19.30	Henley Philatelic: Evening of Postcards	Bix Village Hall
Wednesday 11th	19.45	TWHAS talk: The Excavations at Westgate, Oxford	St Mary's Church, Wallingford
Thursday 12th	19.30	Crowmarsh Parish Council Meeting	North Stoke Village Hall
Friday 13th	18.00-21.00	Night at the Museum – Cartoons	Wallingford Museum
Saturday 14th	10.00-15.00	Sustainable Wallingford Artweek event	Centre 70
Saturday 14th	10.30	Sue Ryder Sale	Nettlebed
Sunday 15th	13.30	CTC 30-plus-mile road ride	Meet Wallingford Market Place
Thursday 19th	19.30	Annual Parish Meeting	Crowmarsh School
Saturday 21st	10.00-14.00	Stoke Row Market	Stoke Row Village Hall
Saturday 21st	16.00	Handbell Concert	Benson Parish Hall
Sunday 22nd	10.00	Wallingford 5 and 10k run	From Crowmarsh Primary School
Wednesday 25th	19.30	Henley Philatelic : AGM and members bring five favourites	Bix Village Hall
Sunday 29th and Monday 30th	All Day	Railway Bank Holiday Specials	Cholsey and Wallingford Railway