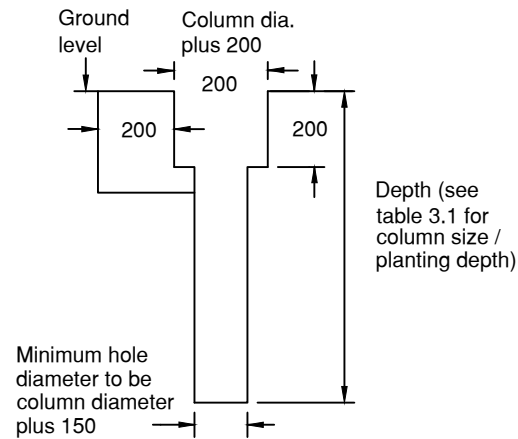


Notes

1. All annotations and dimensions on this drawing complement or supersede the Highway England Specification for Highways which shall otherwise apply (along with the appropriate Appendices) to all works and materials required for this Standard Detail.
2. All dimensions are in millimetres unless shown otherwise.
3. For details of locations of street lighting columns, see street lighting layout drawings and schedules.
4. The shaft shall be left for 48 hours before the bracket arm is attached to the shaft.
5. All columns shall be numbered at the time of erection with a 50mm high black figure(s) on a white background. This is to be a self adhesive (one piece) label manufactured by BRADY UK (outdoor marking vinyl film ref:- B30C-2250-595-WT or similar approved). Numbers are to be applied 2m above ground level, and shall face the carriageway.
6. Lantern grub screws shall where indicated by the manufacture be tightened to the correct torque setting with an approved torque wrench.
7. All column bracket arm grub screws shall have a 'baked on' nylon patch.
8. Standard concrete mixes shall comply with clause 2602.
9. Columns situated within 20 metres of LV overhead power lines to have warning lables fitted complying to BS 5378 part 1 'Danger overhead live wires' (for details see HSD/1300/025).
10. Columns situated in close proximity or directly below HV overhead power lines to have warning lables fitted see HSD 1300/025 & 1300/026.
11. For wiring details see HSD/1400/018
12. Columns in vulnerable positions to have column barrier protection system see HSD/1300/008.
13. All columns to be heavy duty see table 3.1.



COLUMN HOLE EXCAVATION ELEVATION

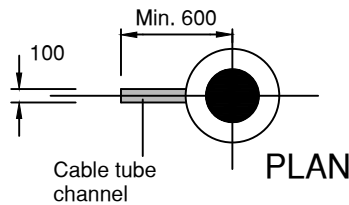
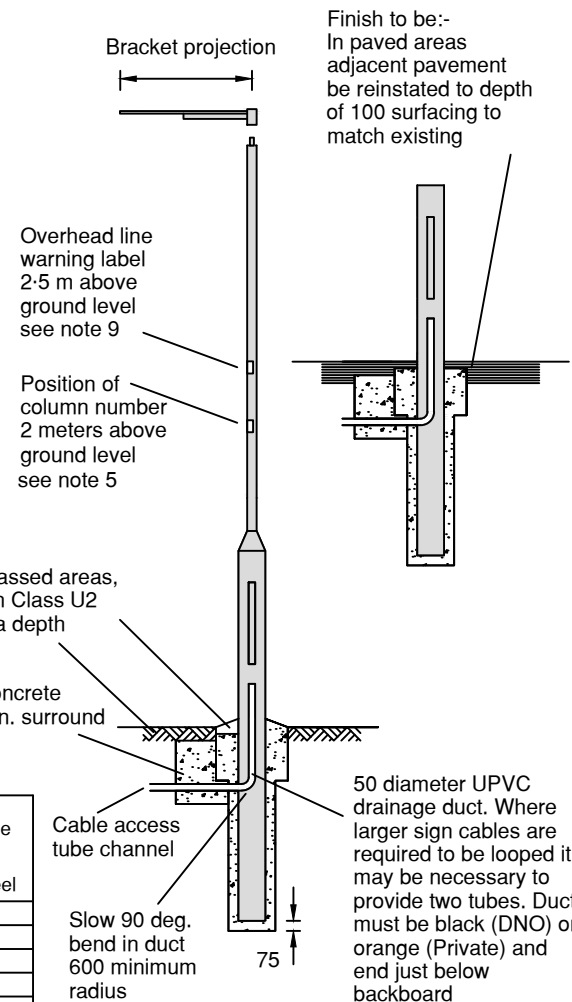


Table 3.1 Standard Conventional Column Assemblies

Mounting height (metres)	Maximum projection (metres)	Planting Depth (m)		Minimum shaft / base Dia. (mm) for tubular steel	Minimum shaft / base thickness (mm) for tubular steel
		octagonal	tubular		
5	0.5	0.8	0.8	76 / 140	3.0 / 5.0
6	0.5	1.0	1.0	76 / 140	3.0 / 5.0
8	0.5	1.2	1.2	114 / 168	3.2 / 5.0
8	0.5 (x2)	1.2	1.2	114 / 168	3.2 / 5.0
10	1.5	1.5	1.5	114 / 168	3.6 / 6.0
10	1.5 (x2)	1.5	1.5	114 / 168	3.6 / 6.0
12	2.0	1.7	1.7	140 / 194	3.6 / 6.0
12	2.0 (x2)	1.7	1.7	140 / 194	3.6 / 6.0
15	2.0 (x2)	2.0	2.0	n/a octagal only	—



ERECTED STREET LIGHTING COLUMN



Column installation details

Road lighting columns and brackets

© Unauthorised reproduction infringes copyright

Scale

Not to Scale

	Initials	Date
Drawn	T P	05.18
Traced	D A B	05.18
Checked	A P-B	05.18

Index

Drawing No.

HSD/1300/002

Date